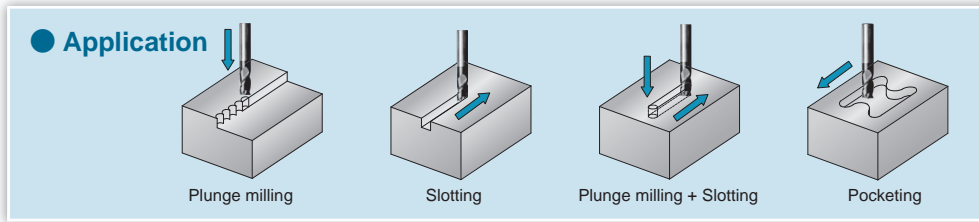
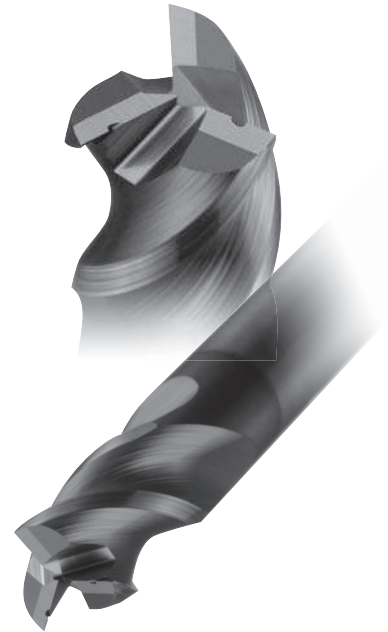


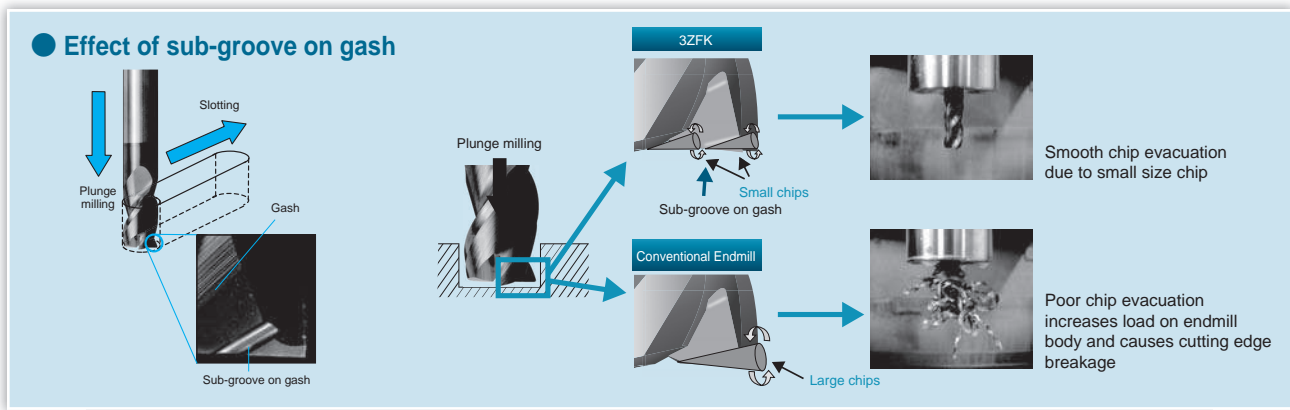
ZFK Series

Applicable for plunge milling, slotting and finishing with one endmill

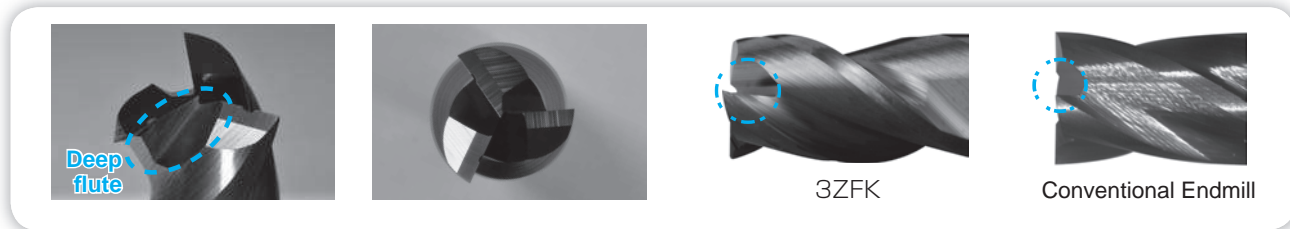


1. High efficiency cutting due to new design

- Smooth chip evacuation because the sub-groove on the gash breaks chips during plunge milling



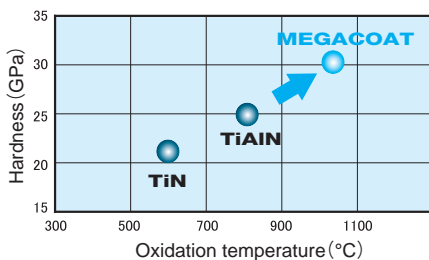
- Prevents chip clogging owing to deep flute and gash design.



2. Longer tool life owing to MEGACOAT

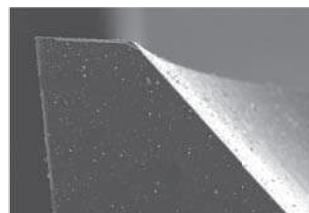
- Excellent wear resistance and heat-resistance

MEGACOAT



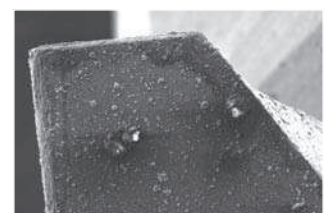
3. Better surface finish owing to sharp cutting edge quality

- Smooth and sharp to the tip of the cutting edge
- Controls burr formation. Better surface roughness



MEGACOAT

Smooth and sharp to the tip of the cutting edge
Longer tool life improved surface finish



Competitor Coating A

Rough coating surface and round blunt cutting edge

L
Solid End Mill