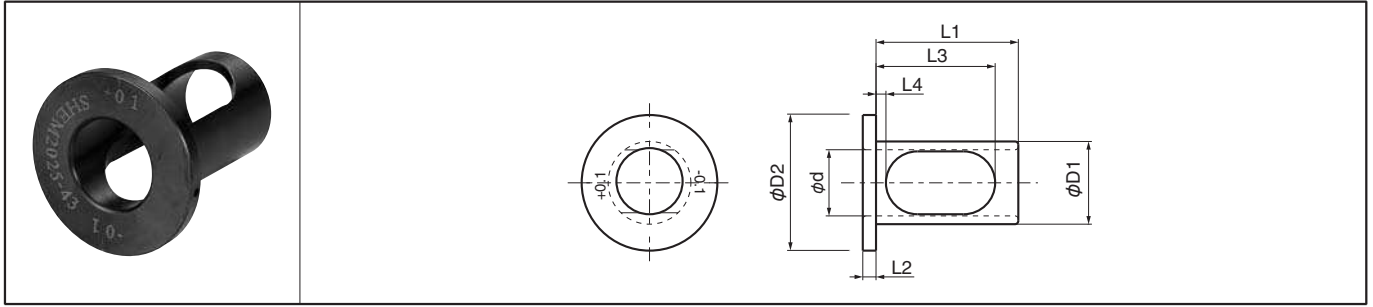


Adjustable Sleeve [DRS MagicDrill Mini for cutting dia. adjustment]

для заказа - kyocera@kyocera-tools.ru www.kyocera-tools.ru

SHEM



Sleeve Dimensions

Description	Std.	Dimension (mm)							*Dia. Adjustment Range
		ød	øD1	øD2	L1	L2	L3	L4	
SHEM 2025-43	●	20	25	41	43	4	36	3.0	+0.1, -0.1
2032-43	●		32	49		6		2.5	

* Diameter Adjustment Range adjusts the cutting diameter.

How to use

- SHEM is designed for only MagicDrill Mini. (DRS-type)
- SHEM is for cutting diameter adjustment only. (up to +0.1mm or -0.1mm)
- SHEM is not for center height adjustment like conventional adjustable sleeve (SHE-type)
- Apply SHEM when adjusting the cutting diameter for pre-drilling before threading.

- ① Set the outer edge horizontally with 90° to making line on the sleeve. (Fig.1)
- ② To adjust to larger diameter, align the +0.1 mark on the sleeve with the flat on the drill shank.
To adjust to smaller diameter, align the -0.1 mark on the sleeve with the flat on the drill shank.
- ③ Tighten the bottom screw firmly which is directly touching the drill.
Slightly tighten the upper screw which is directly touching the sleeve.

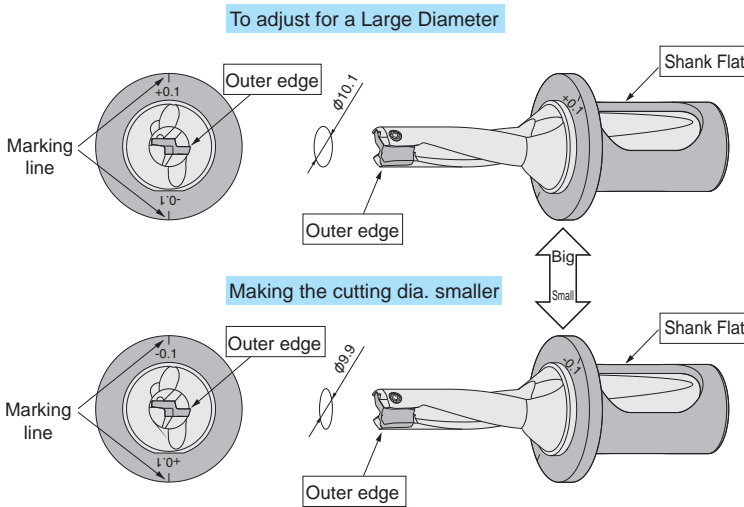


Fig.1 Diameter Adjustment Method (e.g.) ø10 Drill

Caution: Not for use with Collet Chuck type Arbor.

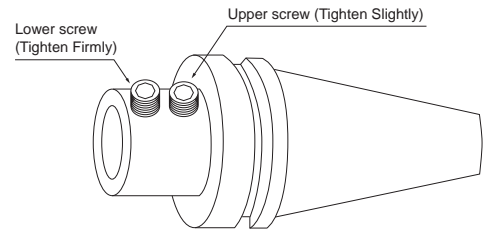


Fig.2

● : Std. Item □ : Check Availability