

DRX enables stable and efficient drilling

New Technology: Twisted Coolant Holes

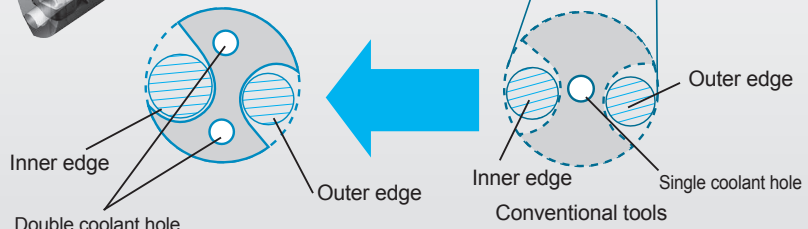
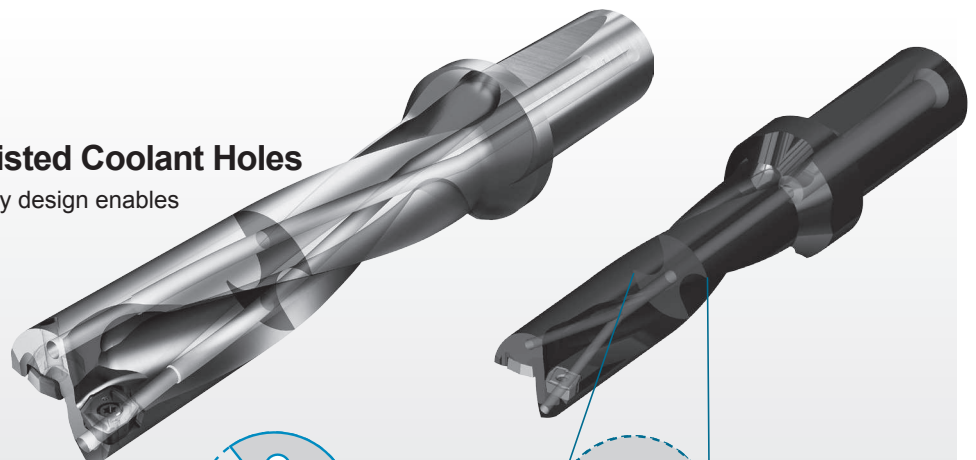
Twisted Coolant Hole technology design enables



Superior Chip Evacuation

Better chip evacuation through the flute space of the internal cutting edge

1.25 times higher cooling performance



The special alloy enables toolholder stability and increased reliability.

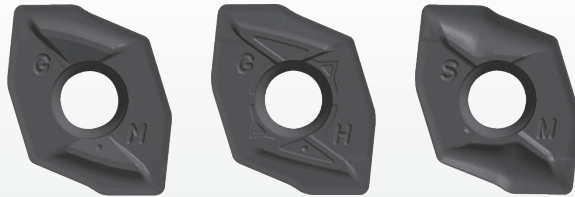
K



Drilling

Chipbreaker design with new concept: The three chipbreakers are now coming

Covers a variety of workpiece materials

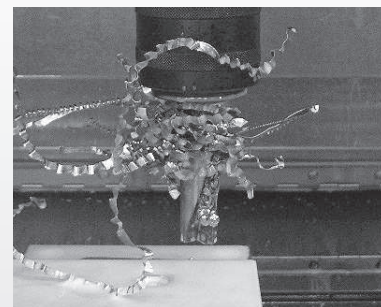


GM Chipbreaker
Carbon Steel, Cast Iron
General Purpose

GH Chipbreaker
for hard materials
Edge strengthened type

SM Chipbreaker
Stainless Steel, Low Carbon Steel
Sharp cutting for deeper drilling

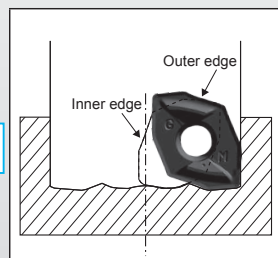
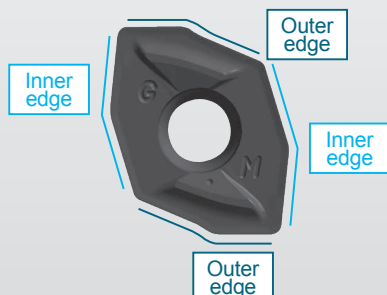
The problem of sticky chip trouble when machining stainless steel or low carbon steel workpieces is solved.



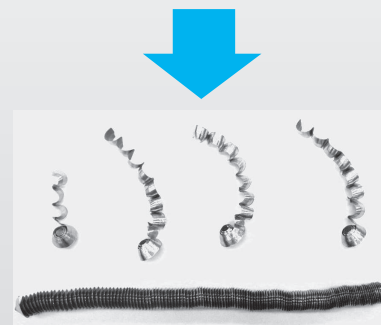
Long entangled chips (competitor A)

Economical 4 edged type

2 inner pocket cutting edges and 2 outer pocket cutting edges



positioning of outer edge and inner edge



Chips by SM chipbreaker (SUS304)