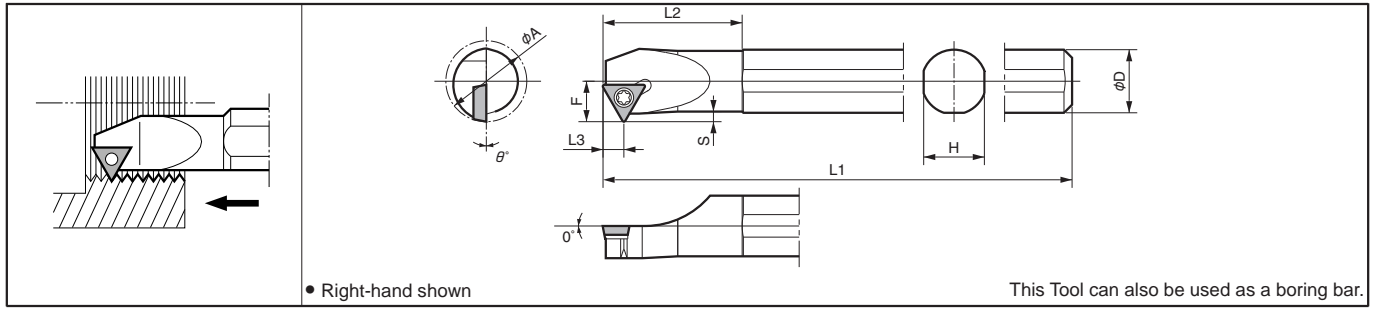
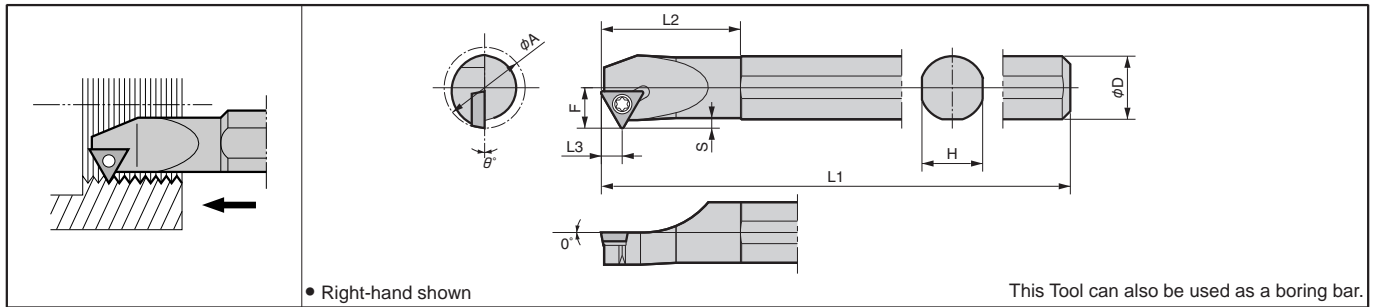


Internal Threading Toolholders [TPGB Insert]

S...STWP



S...STWP-E Excellent Bar



Toolholder Dimensions

Description	(Previous Description)	Std.		Min. Bore Dia.	Dimension (mm)							Available Pitch (mm)	Spare Parts	
		R	L		φA	φD	H	L1	L2	L3	F		S	Clamp Screw
S10M -STWP ^φ / _L 11-12	SIT ^φ / _L 1210-11	●		12	10	9.2	150	23	5.5	6	1.0	1.5 and under	SB-3STR	FT-10
S12M -STWP ^φ / _L 11-16		●		16	12	11	150	30		8	1.5	2.0 and under		
S16Q -STWP ^φ / _L 11-20		●		20	16	15	180	35		10	2.0	3.0 and under		
S20R -STWP ^φ / _L 11-25		●		25	20	19	200	40		12.5	2.5	3.5 and under		
S10M -STWP ^φ / _L 11-12E	-	●●		12	10	9.2	150	23	5.5	6	1.0	1.5 and under	SB-3STR	FT-10
S12M -STWP ^φ / _L 11-16E		●●		16	12	11	150	30		8	1.5	2.0 and under		
S16R -STWP ^φ / _L 11-20E		●●		20	16	15	200	35		10	2.0	3.0 and under		
S20X -STWP ^φ / _L 11-25E		●●		25	20	19	220	40		12.5	2.5	3.5 and under		

* Dimension S: shows the Max. available ap.

Applicable Inserts

Description	A	T	φd	P	M	K	N	Classification of usage										
								●	○	●	○	●	○	●	○			
TPGB1102...	6.35 (11)	2.38	3.5	●				●										
TPGB1103...	6.35 (11)	3.18	3.3	●				○										

Insert	Description	Applicable Thread	Pitch		Dimension (mm)		Angle (°)	Cermet	PVD Coated Carbide	Carbide	Applicable Toolholder	Ref. Page for Depth of Cut & No. of Passes	
			mm	TPI	rε	θ							
	TPGB 1102005	M	0.75-1.5	-	28-16	0.05	60°	●			...STWP ^φ / _L 11-12(E)	J39	
		UN	-	-	-	-		-					
	TPGB 1103005	M	0.75-3.5	-	28-11	0.05		●					
		UN	-	-	-	-		-					
	TPGB 110301	M	1.5-3.5	-	16-8	0.10		●		●			
UN		-	-	-	-	-				...STWP ^φ / _L 11-20(E)			
TPGB 110302	M	3.0-3.5	-	8	0.20	●	●	●	●	...STWP ^φ / _L 11-25(E)			

Applicable	M: Metric	R, RC (PT), (BSPT): Tapered Pipe
Thread	UN: Unified	W: Whitworth
	UNF: Unified Fine Thread	NPT: American National Tapered Pipe
	G (PF): Parallel Pipe	Tr: 30°Trapezoidal

For recommended cutting conditions, see page J29

Inserts are sold in 10 piece boxes.

● : Std. Item □ : Check Availability