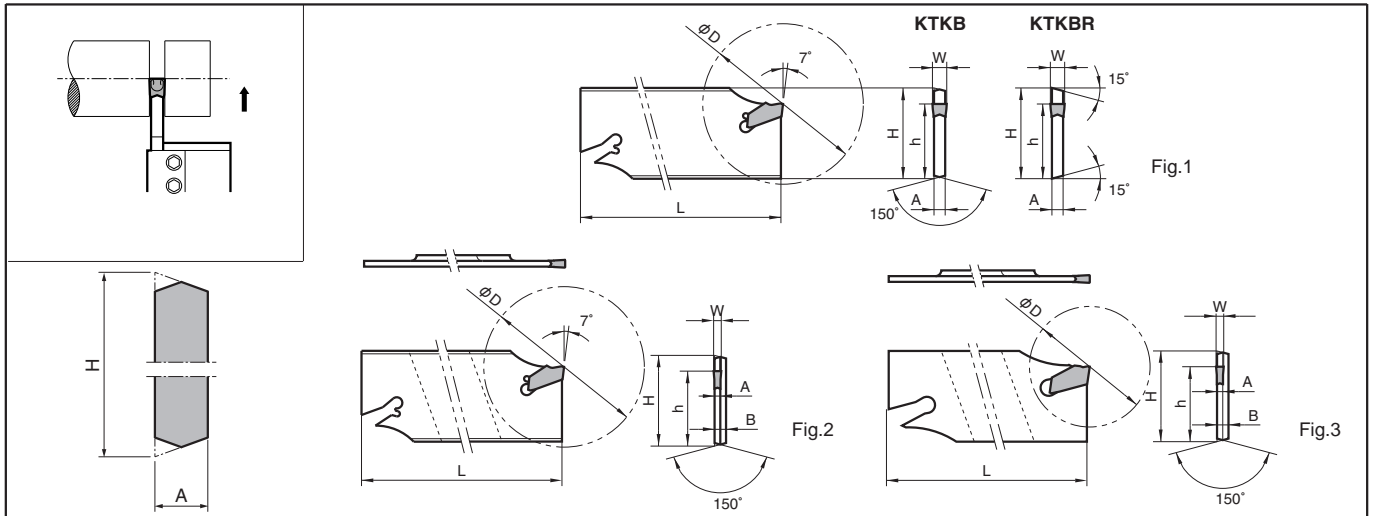


# Cut-Off Blades

## KTKB-S / KTKB-SS



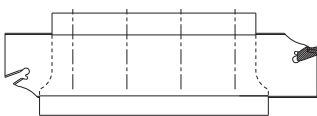
### Blade Dimensions

| Description                | Std. | Cutting Dia. øDmax | Dimension (mm) |      |      |     |     | Width (mm) | Drawing        | Applicable Inserts <b>H21</b> |                     |  |                         | Applicable Block <b>H23</b>                            |
|----------------------------|------|--------------------|----------------|------|------|-----|-----|------------|----------------|-------------------------------|---------------------|--|-------------------------|--|
|                            |      |                    | H              | h    | B    | L   | A   |            |                | TKN                           | TKN-P               | TK <sup>R</sup> /L                           | TK <sup>R</sup> /L-P    |  |
| KTKB 19-1SS                | ●    | 32                 | 19             | 15.7 | 2.4  | 86  | 1.2 | 1.6        | Fig.3          | TKN1.6                        | TKN1.6-P            | TK <sup>R</sup> /L1.6                        | TK <sup>R</sup> /L1.6-P | KTKTB 16-19<br>20-19                                   |
| KTKB 26-1SS                | ●    | 35                 | 26             | 21.4 | 2.4  | 110 | 1.2 | 1.6        | Fig.3          | TKN1.6                        | TKN1.6-P            | TK <sup>R</sup> /L1.6                        | TK <sup>R</sup> /L1.6-P | KTKTB 16-26<br>20-26                                   |
| KTKB 32-1SS                | ●    | 35                 | 32             | 25   | 2.4  | 150 | 1.2 | 1.6        | Fig.3          | TKN1.6                        | TKN1.6-P            | TK <sup>R</sup> /L1.6                        | TK <sup>R</sup> /L1.6-P | KTKTB 20-32<br>25-32<br>32-32<br>KTKTBF 25-32<br>32-32 |
| KTKB 19-2S                 | ●    | 40                 | 19             | 15.7 | -    | 86  | 1.8 | 2.2<br>2.4 | Fig.1          | TKN2<br>TKN2.4                | TKN2-P              | TK <sup>R</sup> /L2<br>TK <sup>R</sup> /L2.4 | TK <sup>R</sup> /L2-P   | KTKTB 16-19<br>20-19                                   |
| KTKB 26-2S                 | ●    | 50                 | 26             | 21.4 | -    | 110 | 1.8 | 2.2<br>2.4 |                | TKN2<br>TKN2.4                | TKN2-P              | TK <sup>R</sup> /L2<br>TK <sup>R</sup> /L2.4 | TK <sup>R</sup> /L2-P   | KTKTB 16-26<br>20-26                                   |
| KTKB 26-3S                 | ●    | 75                 |                |      |      |     | 2.6 | 3.1        | TKN3           | TKN3-P                        | TK <sup>R</sup> /L3 | TK <sup>R</sup> /L3-P                        |                         |  |
| KTKB 26-4S                 | ●    | 80                 |                |      |      |     | 3.4 | 4.1        | TKN4           | -                             | TK <sup>R</sup> /L4 | -  |                         |  |
| KTKB 26-5S                 | ●    | 80                 |                |      |      |     | 4.2 | 4.8<br>5.1 | TKN4.8<br>TKN5 | -                             | TK <sup>R</sup> /L5 | -  |                         |  |
| KTKB 32-2S                 | ●    | 50                 | 32             | 25   | -    | 150 | 1.8 | 2.2<br>2.4 | Fig.2          | TKN2<br>TKN2.4                | TKN2-P              | TK <sup>R</sup> /L2<br>TK <sup>R</sup> /L2.4 | TK <sup>R</sup> /L2-P   | KTKTB 20-32<br>25-32<br>32-32<br>KTKTBF 25-32<br>32-32 |
| KTKB 32-3S                 | ●    | 100                |                |      |      |     | 2.6 | 3.1        |                | TKN3                          | TKN3-P              | TK <sup>R</sup> /L3                          | TK <sup>R</sup> /L3-P   |  |
| KTKB 32-4S                 | ●    | 100                |                |      |      |     | 3.4 | 4.1        | TKN4           | -                             | TK <sup>R</sup> /L4 | -  |                         |  |
| KTKB 32-5S                 | ●    | 120                |                |      |      |     | 4.2 | 4.8<br>5.1 | TKN4.8<br>TKN5 | -                             | TK <sup>R</sup> /L5 | -  |                         |  |
| KTKB <sup>R</sup> /L 32-6S | ●    | 120                | 32             | 25   | -    | 150 | 5.4 | 6.4        | Fig.1          | TKN6                          | -                   | -  | -                       |  |
| KTKB <sup>R</sup> /L 32-8S | ●    | 120                |                |      |      |     | 6.8 | 8.0        |                | TKN8                          | -                   | -  | -                       |  |
| KTKB <sup>R</sup> /L 32-9S | R    | 120                | 8.0            | 9.6  | TKN9 | -   | -   | -          |                |                               |                     |  |                         |  |

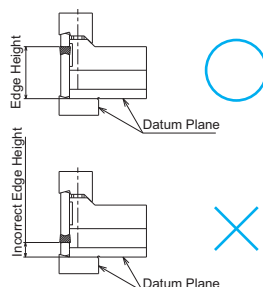
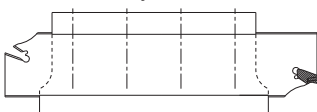
Note) 1. Suffix "-SS" means silver coating.  
2. Releasing wrench is "LTK-5".  
\* Dimension H shows virtual apex distance.

### How to install toolblock and blade.

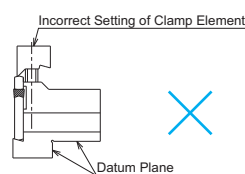
#### Correct way



#### Incorrect way



#### Incorrect Setting of Clamp Element



If the clamp element is mounted backwards, a large gap will occur between the clamp and the toolblock and the blade may come off during cutting. Be careful when installing the clamp for safety reasons.