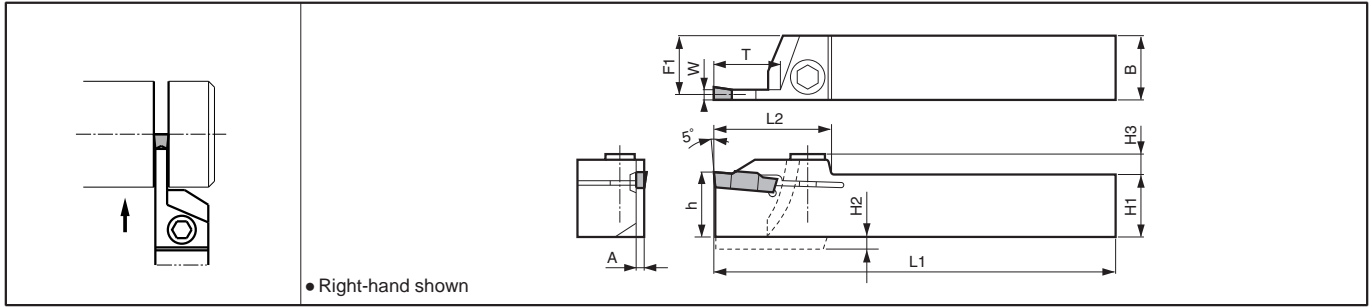


**KGM-T**

Width: 2.0~6.0mm



**Toolholder Dimensions**

Description	Std.		Dimension (mm)										Width W (mm)		Spare Parts			
	R	L	H1-h	H2	H3	B	L1	L2	F1	A	T	MIN.	MAX.	Screw		Wrench		
<b>KGM<sup>β</sup>/L</b>	●	●	20			12	125		11.15			2.0	3.0	SB-5TR	-	LTW-20	-	
	●	●	20	-	7	20	125	33	19.15	1.7	17			-	HH5X16	-	LW-4	
	●	●	25			25	150		24.15					-	HH5X25	-	LW-4	
	●	●	16	4		16	100		14.8					-	HH5X16	-	LW-4	
	●	●	20		7	12	125	36	10.8	2.4	20	3.0	4.0	SB-5TR	-	LTW-20	-	
	●	●	20			20	125		18.8					-	HH5X16	-	LW-4	
	●	●	25			25	150		23.8					-	HH5X25	-	LW-4	
	●	●	20			20	125	36	18.3		20			-	HH5X16	-	LW-4	
	●	●	25		7.5	25	150	36	23.3	3.4	20	4.0	5.0	-	HH5X25	-	LW-4	
	●	●	25			25	150	41	23.3		25			-	HH5X25	-	LW-4	
	●	●	25		8.5	25	150	42	22.8	4.4	25	5.0	6.0	-	HH5X25	-	LW-4	
	●	●	32			32	170		29.8					-	HH5X25	-	LW-4	
●	●	25		9.5	25	150	45	22.4	5.2	30	6.0	6.0	-	HH5X25	-	LW-4		

• Dimension T shows the distance from the Toolholder to the cutting edge. See the Table H20) for the relationship between the Grooving Depth and the Cutting Dia.  
 • When using GMG / GMM type (2-edge) Insert, set the grooving depth under 15mm.

**Applicable Inserts**

Applications	Grooving / Turning	Grooving / Turning	Grooving	Full-R / Copying	Full-R / Copying	Cut-Off	Cut-Off	Cut-Off	Cut-Off	Cut-Off
Ref. Page	G32	G32	G32	G32	G33	H16	H16	H16	H16	H16
Insert										
Toolholder								<b>TMR</b>		
<b>KGM<sup>β</sup>/L...1.5</b>	-	-	-	-	-	GMM1520..MT GMM2020..MT GMM1520%..MT GMM2020%..MT	GMM1520..NB GMM2020..NB	GMM2020..T GMM2020%..T	GMN2..TK GM%2..TK	-
<b>KGM<sup>β</sup>/L...2(T)</b>	GMM2420..MW GMM3020..MW	GMG3020..MS GMM3020..MS	GMG2520..MG GMG3020..MG	GMG3020..R GMM3020..R	-	GMM2020..MT GMM2520..MT GMM3020..MT GMM2020%..MT GMM2520%..MT GMM3020%..MT	GMM2020..NB GMM2520..NB GMM3020..NB	GMM2020..T GMM2520..T GMM3020..T GMM2020%..T GMM2520%..T GMM3020%..T	GMN2..TK GMN3..TK GM%2..TK GM%3..TK	GMN2 GMN2.2 GMN3 GM%2.2 GM%3
<b>KGM<sup>β</sup>/L...2.5</b>	GMM2420..MW GMM3020..MW	GMG3020..MS GMM3020..MS	GMG2520..MG GMG3020..MG	GMG3020..R GMM3020..R	-	GMM2520..MT GMM3020..MT GMM2520%..MT GMM3020%..MT	GMM2520..NB GMM3020..NB	GMM2520..T GMM3020..T GMM2520%..T GMM3020%..T	GMN3..TK GM%3..TK	GMN3 GM%3
<b>KGM<sup>β</sup>/L...3(T)</b>	GMM3020..MW GMM4020..MW	GMG3020..MS GMM3020..MS GMG4020..MS GMM4020..MS	GMG3020..MG GMG3520..MG GMG4020..MG	GMG3020..R GMM3020..R GMG4020..R GMM4020..R	-	GMM3020..MT GMM3020%..MT	GMM3020..NB	GMM3020..T GMM3020%..T	GMN3..TK GMN4..TK GM%3..TK GM%4..TK	GMN3 GMN4 GM%3 GM%4
<b>KGM<sup>β</sup>/L...4(T)</b>	GMM4020..MW GMM5020..MW	GMG4020..MS GMM4020..MS GMG5020..MS GMM5020..MS	GMG4020..MG GMG5020..MG	GMG4020..R GMM4020..R GMG5020..R GMM5020..R	-	-	-	-	GMN4..TK GM%4..TK	GMN4 GMN5 GM%4
<b>KGM<sup>β</sup>/L...5T</b>	GMM5020..MW GMM6020..MW	GMG5020..MS GMM5020..MS GMG6020..MS GMM6020..MS	GMG5020..MG GMG6020..MG	GMG5020..R GMM5020..R GMG6020..R GMM6020..R	GMGA6020..R	-	-	-	-	GMN5 GMN6
<b>KGM<sup>β</sup>/L...6T</b>	GMM6020..MW	GMG6020..MS GMM6020..MS	GMG6020..MG	GMG6020..R GMM6020..R	GMGA6020..R	-	-	-	-	GMN6
<b>KGM<sup>β</sup>/L...8</b>	GMM8030..MW	-	GMG8030..MG	-	GMGA8030..R	-	-	-	-	-

For recommended cutting conditions, see page H25

● : Std. Item □ : Check Availability