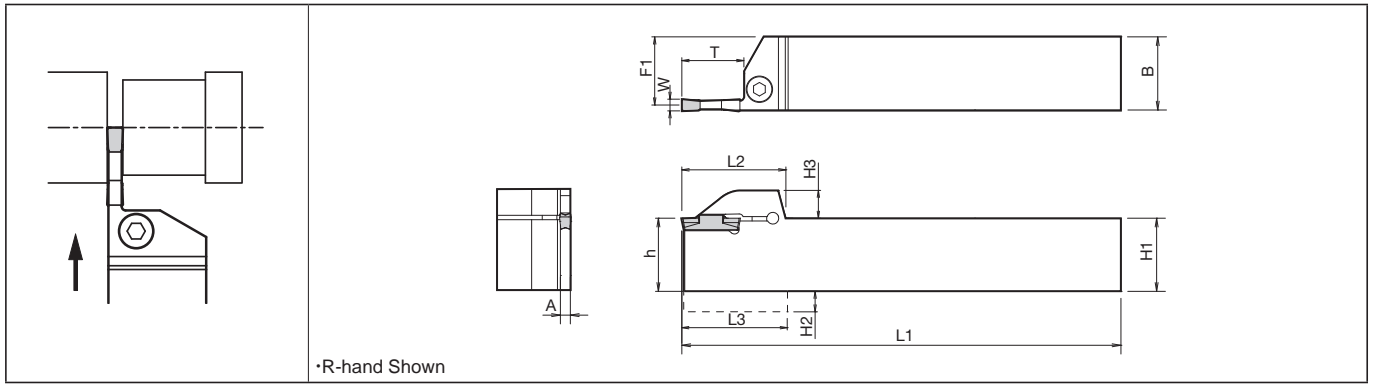


# Grooving / Cut-Off

## KGD (Integral Type)



### Toolholder Dimensions

Width (mm)	Available Grooving Depth (mm)	Description	Std.		Dimension (mm)											Width W (mm)		Spare Parts											
			R	L	H1=h	H2	H3	B	L1	L2	L3	F1	A	T	MIN	MAX	Clamp Bolt	Wrench											
2	6	KGD% 1616H-2T06	●	●	16	4.0	9.5	16	100	27.7	28.0	15.2	1.7	6	2.0	3.0	HH5X16	LW-4											
		2020K-2T06	●	●	20	-		20	125	28.0	-	19.2																	
		2525M-2T06	●	●	25	-		25	150	-	24.2																		
	10	KGD% 1616H-2T10	●	●	16	4.0		16	100	30.2	30.5	15.2							10	2.0	3.0	HH5X16	LW-4						
		2020K-2T10	●	●	20	-		20	125	30.5	-	19.2																	
		2525M-2T10	●	●	25	-		25	150	-	24.2																		
	17	KGD% 1616H-2T17	●	●	16	4.0		16	100	31.2	31.5	15.2							17	2.0	3.0	HH5X16	LW-4						
		2012K-2T17	●	●	20	-		12	125	-	11.2																		
		2020K-2T17	●	●	20	-		20	125	32.5	-	19.2																	
	3	6	KGD% 1616H-3T06	●	●	16		4.0	16	100	27.7	28.0							14.8	2.4	10	3.0	4.0	HH5X16	LW-4				
			2020K-3T06	●	●	20		-	20	125	28.0	-							18.8										
			2525M-3T06	●	●	25		-	25	150	-	23.8																	
10		KGD% 1616H-3T10	●	●	16	4.0	16	100	30.2	30.5	14.8	20	3.0	4.0	HH5X16	LW-4													
		2020K-3T10	●	●	20	-	20	125	30.5	-	18.8																		
		2525M-3T10	●	●	25	-	25	150	-	23.8																			
20		KGD% 1616H-3T20	●	●	16	4.0	16	100	34.2	34.5	14.8	20	3.0	4.0	HH5X16	LW-4													
		2012K-3T20	●	●	20	-	12	125	34.5	-	10.8																		
		2020K-3T20	●	●	20	-	20	125	-	18.8																			
4		10	KGD% 2020K-4T10	●	●	20	-	20	125	30.5	-	18.3	3.4	10	4.0	5.0	HH5X16	LW-4											
			2525M-4T10	●	●	25	-	25	150	-	23.3																		
			KGD% 2020K-4T20	●	●	20	-	20	125	34.5	-	18.3																	
	20	2525M-4T20	●	●	25	-	25	150	35.5	-	23.3	25							4.0	5.0	HH5X16	LW-4							
		KGD% 2525M-4T25	●	●	25	-	25	150	40.5	-	23.3																		
		KGD% 2525M-4T25	●	●	25	-	25	150	40.5	-	23.3																		
	5	10	KGD% 2020K-5T10	●	●	20	-	20	125	30.5	-	17.8							4.4	10	5.0	6.0	HH5X16	LW-4					
			2525M-5T10	●	●	25	-	25	150	-	22.8																		
		17	KGD% 2020K-5T17	●	●	20	-	20	125	37.5	-	17.8													17	5.0	6.0	HH5X25	LW-4
			2525M-5T17	●	●	25	-	25	150	-	22.8																		
		25	KGD% 2525M-5T25	●	●	25	-	25	150	40.5	-	22.8													25	5.0	6.0	HH5X25	LW-4
			KGD% 2525M-5T25	●	●	25	-	25	150	40.5	-	22.8																	
6	15	KGD% 2525M-6T15	●	●	25	-	25	150	32.5	-	22.4	5.3	15	6.0	6.0	HH5X25	LW-4												
	30	KGD% 2525M-6T30	●	●	25	-	25	150	45.5	-	22.4																		
8	25	KGD% 2525M-8T25	●	●	25	7.0	25	150	43.3	44.2	22.0	6.0	25	8.0	8.0	HH6X25	LW-5												
		3232P-8T25	●	●	32	-	32	170	-	29.0																			

Note)1. Dimension T : Maximum depth to which processing can be made. (If the dimension T is 20 mm or more, the maximum groove-depth made by the 2-edged insert will be 18 mm.)

2. Recommended tightening torque of clamp bolt: 6.5N•m (Groove width 2 - 6 mm), 8.0N•m (Groove width 8 mm)

Recommended Cutting Conditions **H13**

● : Std. Item  
□ : Check Availability