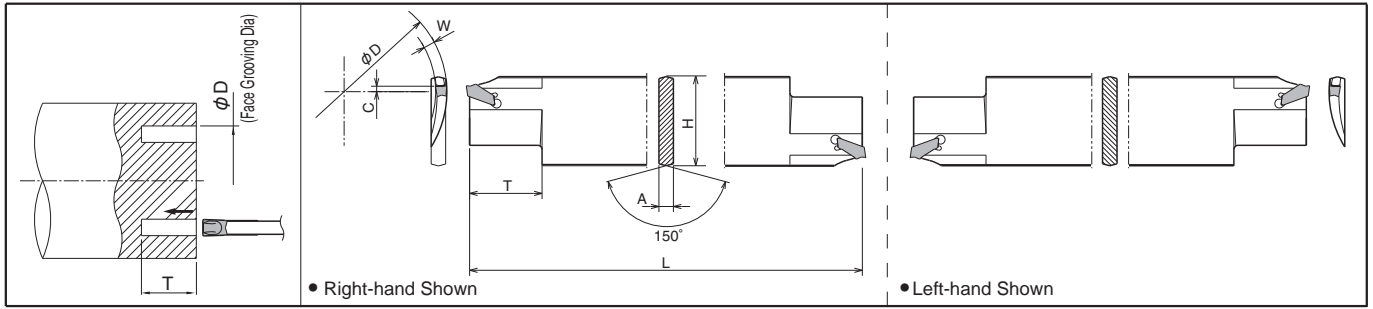


Face Grooving Blade

KFTB-S



Blade Dimensions

Description	Std.	Dimension (mm)							Width (mm)	Face Grooving Dia. ϕD		Spare Parts Wrench	Applicable Inserts	Applicable Blocks ➔ H23
		R	L	*H	L	A	T	C		MIN.	MAX.			
KFTB^{R/L} 65100-4S 90150-4S 150250-4S 250800-4S	●	●	32	150	5.2	25	4	4.0	65	100	LTK-5	FTK4	KTKTB20-32 25-32 32-32	
	●	●				30	0		90	150				
	●	●			140				250					
	●	●			3.2	230	∞							
KFTB^{R/L} 90150-5S 150250-5S 250800-5S	●	●	32	150	5.2	30	0	5.0	90	150	LTK-5	FTK5	KTKTBF25-32 32-32	
	●	●				32			0	150				250
	●	●			4.0					38				250

- Dimension T shows available grooving depth.
- Face Grooving Dia. ϕD: The diameter range of the initial groove.
- The insert has Self-Clamping system and it is not suitable for tight tolerance grooves (tolerance ±0.05mm).
- KFTB^{R/L} 65100-4S toolholder is designed with the edge position 4mm above the Center.
- Dimension H shows the length between virtual tops.

Applicable Inserts

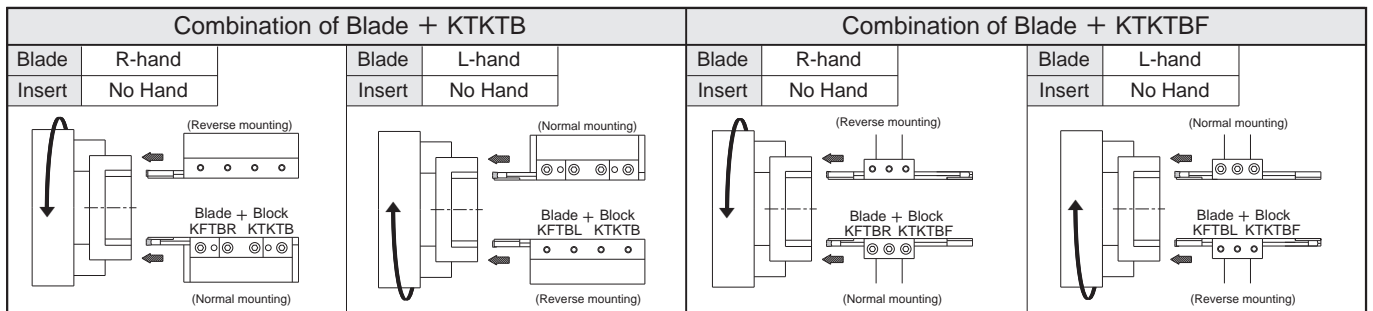
Classification of usage	P	M	K	N	S	H
Carbon Steel / Alloy Steel	●					
Stainless Steel		●				
Cast Iron			●			
Non-ferrous Metals				●		
Titanium Alloy					●	
Hard materials (under 40HRC)						○
Hard materials (over 40HRC)						○

● : Continuous-Light Interruption / 1st Choice
 ○ : Continuous-Light Interruption / 2nd Choice
 ● : Continuous / 1st Choice
 ○ : Continuous / 2nd Choice

Insert	Description	Dimensions (mm)					Applicable Toolholder	Ref. Page for Toolholder	
		W	ε	Cermet TN90	CVD Coated Carbide CR9025	PVD Coated Carbide PR660			Carbide PR930
	FTK 4	4.0	0.25	●	●	●	●	KFTB^{R/L} 65100-4S 90150-4S 150250-4S 250800-4S	G87
	FTK 5	5.0		●	●	●	●		

For recommended cutting conditions, see page G92

Selection of Blade and Insert



● : Std. Item □ : Check Availability R : Std. Item (R-hand Only) L : Std. Item (L-hand Only)

