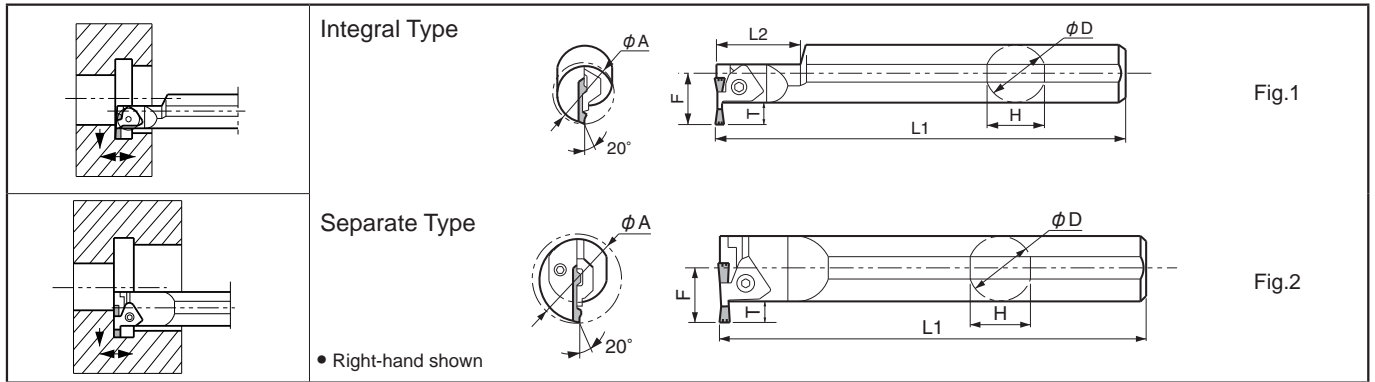


Internal Large Diameter Deep Grooving Toolholders [GIA Insert]

KGIA



Toolholder Dimensions

Description	Std.	Min. Cutting Dia.	Dimension (mm)							Drawing	Spare Parts			
			øA	øD	H	L1	L2	F	T		Clamp	Clamp Bolt	Spring	Wrench
KGIA 3232B-3 4332B-3 5140B-3	●	32	32	30	200	45	26.3		Fig.1	CGIA-3R	HH5X15	SP-5	LW-4	
	●	43	32	30	200	-	26.3	10	Fig.2					
	●	51	40	38	250	-	30.3		Fig.1					
3232B-4 4332B-4 5140B-4	●	32	32	30	200	45	26.3		Fig.1	CGIA-4R	HH5X15	SP-5	LW-4	
	●	43	32	30	200	-	26.3	10	Fig.2					
	●	51	40	38	250	-	30.3		Fig.2					
5640B-5 6650B-5	●	56	40	38	250	-	35.3	15	Fig.2	CGIA-5R				
	●	66	50	48	250	-	40.3		Fig.2					

* Dimension T shows available grooving depth.

Composition

Type	Spare Parts		Toolholder	Blade	Screw	Wrench
Integral	KGIA	3232B-3	-	-	-	-
Separate		4332B-3	KGIA32H	BGIAR43-3	SB-40140TR	FT-15
		5140B-3	KGIA40H	BGIAR51-3		
Integral		3232B-4	-	-	-	-
Separate		4332B-4	KGIA32H	BGIAR43-4	SB-40140TR	FT-15
		5140B-4	KGIA40H	BGIAR51-4		
Separate		5640B-5	KGIA40H	BGIAR56-5	SB-40140TR	FT-15
		6650B-5	KGIA50H	BGIAR66-5		

Applicable Inserts

P	Carbon Steel / Alloy Steel	○	●	Classification of usage	
M	Stainless Steel	○	●		
K	Cast Iron				
N	Non-ferrous Metals				
S	Titanium Alloy			● : Continuous-Light Interruption / 1st Choice	
H	Hard materials (under 40HRC)	○	●	○ : Continuous-Light Interruption / 2nd Choice	
	Hard materials (over 40HRC)			● : Continuous / 1st Choice	
				○ : Continuous / 2nd Choice	

Insert	Description	Dimension (mm)				Cermet TN60 CVD Coated Carbide CR9025	Applicable Toolholder
		W	re	L	H		
 Molded Chipbreaker	GIA 30	3.0	0.20	25	5.0	● ●	KGIA^{R/L} ...3
	40	4.0	0.25			● ●	KGIA^{R/L} ...4
	50	5.0	0.30	30	● ●	KGIA^{R/L} ...5	

For recommended cutting conditions, see page **G91**

Inserts are sold in 10 piece boxes.

● : Std. Item □ : Check Availability R : Std. Item (R-hand Only) L : Std. Item (L-hand Only)