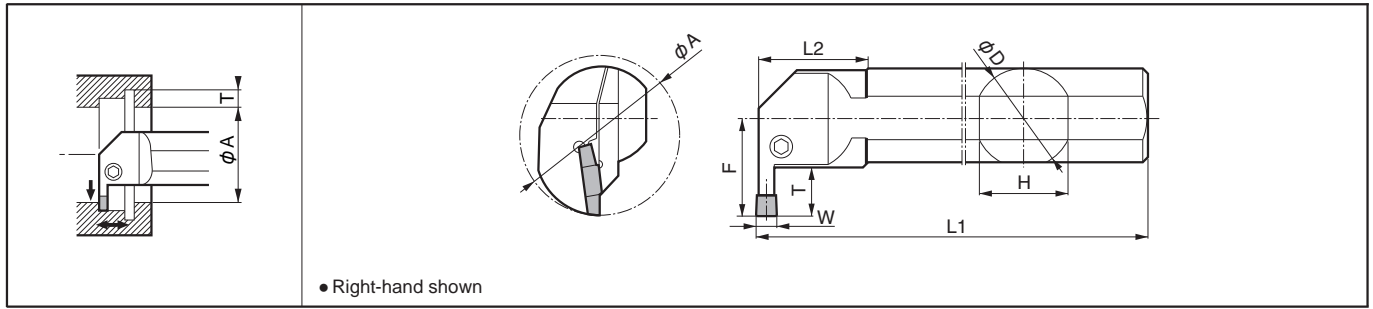
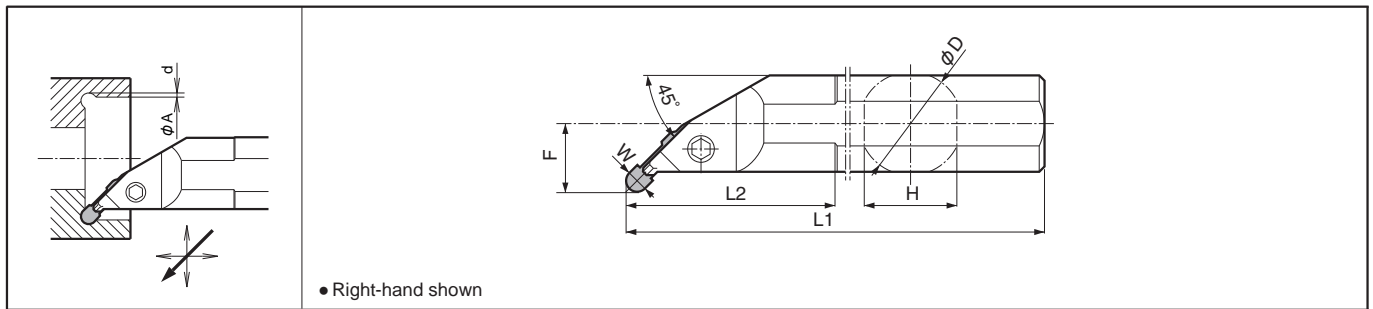


Internal Grooving Toolholder / Internal Undercutting Toolholder

KIGM-8 (8mm-Width Insert / Large Internal Diameter Deep Grooving)



KIGMU-8 (8mm-Width Insert / Large Internal Diameter Undercut Grooving)



Toolholder Dimensions

Description	Std.		Min. Cutting Dia.	Dimension (mm)								Width (mm)		Spare Parts	
	R	L		ϕA	ϕD	H	L1	L2	F	T	d	MIN.	MAX.	Screw	Wrench
KIGM^{R/L} 6540B-8	●	●	65	40	36	300	41	41	20	-		8.0	8.0	HH6X20	LW-5
KIGMU^{R/L} 6540B-8	●		65	40	36	300	83	26	-	2.2		8.0	8.0	HH6X20	LW-5

* Dimension T shows available grooving depth.

* Dimension d shows the distance from the Internal face of the workpiece.

Applicable Inserts (mm)

Description	L	H
GMM8030-080MW	30	5.5
GMG8030-050MG		
GMGA8030-400R		

	P	M	K	N	S	H	Classification of usage									
	Carbon Steel / Alloy Steel	Stainless Steel	Cast Iron	Non-ferrous Metals	Titanium Alloy	Hard materials (under 40HRC)										
						Hard materials (over 40HRC)										

● : Continuous-Light Interruption / 1st Choice
 ○ : Continuous-Light Interruption / 2nd Choice
 ● : Continuous / 1st Choice
 ○ : Continuous / 2nd Choice

Insert	Description	(Previous Description)	Dimension (mm)			Cermets	CVD Coated Carbide	PVD Coated Carbide			Carbide	Applicable Toolholder	Ref. Page for Toolholder	
			W	r _c	M			TN90	CR9025	PR915				PR930
 Chip Control Oriented / M Class		GMM 8030-080MW / GMM 8030-08	8.0	0.8	6.0			●	●	●	●	●		
 Sharp-Cutting Oriented / Precision Class Ground Chipbreaker		GMG 8030-050MG / GMG 8030-05MG	8.0	0.5	6.0	●	●		●	●	●	●	KIGM^{R/L} ...8 KIGMU^{R/L} ...8	G59
 Sharp-Cutting Oriented / Precision Class Full-R / Copying		GMGA 8030-400R / GMGA 8030-40R	8.0	4.0	6.0							●		

For recommended cutting conditions, see page **G93**

* If using a full-R insert with KIGM-8 type toolholder, you need to modify the corner of insert adapter of toolholder.

● : Std. Item □ : Check Availability R : Std. Item (R-hand Only) L : Std. Item (L-hand Only)

Inserts are sold in 10 piece boxes.