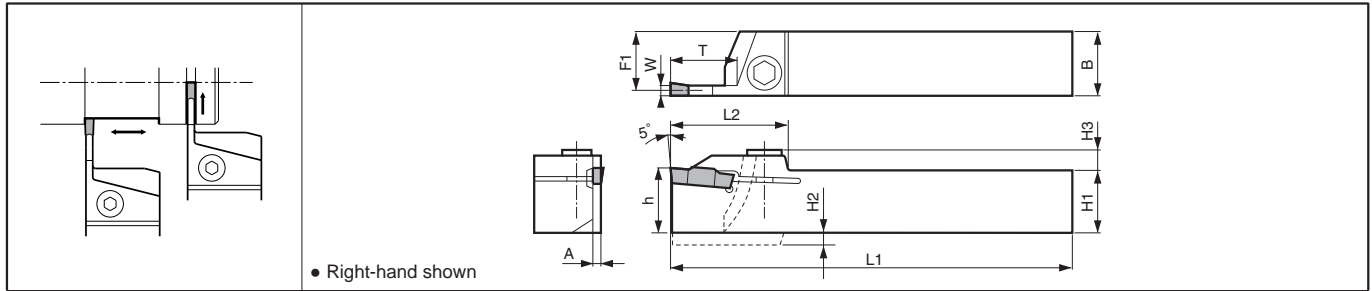


**KGM-T** (Deep Grooving Type)

Width: 2.0-6.0mm



• Right-hand shown

• Toolholder Dimensions

Description	Std.		Dimension (mm)									Width W (mm)		Spare Parts			
	R	L	H1-h	H2	H3	B	L1	L2	F1	A	T	MIN.	MAX.	Screw		Wrench	
<b>KGM<sup>PL</sup></b>	●	●	20			12	125	11.15				2.0	3.0	SB-5TR	-	LTW-20	-
	●	●	20	-	7	20	125	33	19.15	1.7	17			-	HH5X16	-	LW-4
	●	●	25			25	150		24.15					-	HH5X25	-	LW-4
	●	●	16	4		16	100		14.8					-	HH5X16	-	LW-4
	●	●	20	-	7	12	125	36	10.8	2.4	20	3.0	4.0	SB-5TR	-	LTW-20	-
	●	●	20	-		20	125		18.8					-	HH5X16	-	LW-4
	●	●	25	-		25	150		23.8					-	HH5X25	-	LW-4
	●	●	20	-		20	125	36	18.3		20				HH5X16	-	LW-4
	●	●	25	-	7.5	25	150	36	23.3	3.4	20	4.0	5.0	-	HH5X25	-	LW-4
	●	●	25	-		25	150	41	23.3		25						
	●	●	25	-	8.5	25	150	42	22.8	4.4	25	5.0	6.0	-	HH5X25	-	LW-4
	●	●	32	-		32	170		29.8								
●	●	25	-	9.5	25	150	45	22.4	5.2	30	6.0	6.0	-	HH5X25	-	LW-4	

• Dimension T shows the distance from the Toolholder to the cutting edge. Refer to the Table (G35) for the relationship between the available Grooving Depth and the Cutting Dia.  
 • When using GMG / GMM type (2-Edge) insert, set the groove depth under 15mm.

• Applicable Inserts

Applications	Grooving / Traversing	Grooving / Traversing	Grooving	Full-R / Copying	Full-R / Copying	Deep Grooving / Cut-off	Deep Grooving / Cut-off	Deep Grooving / Cut-off	Deep Grooving / Cut-off	Deep Grooving / Cut-off	Deep Grooving
Ref. Page	G32	G32	G32	G32	G33	G34	G34	G34	G34	G34	G35
Insert											
Toolholder											
<b>KGM<sup>PL</sup>...1.5</b>	-	-	-	-	-	GMM1520..MT GMM2020..MT GMM1520%...MT GMM2020%...MT	GMM1520..NB GMM2020..NB	GMM2020..TK GMM2020%...TK	GMN2..TK GM%2..TK	-	-
<b>KGM<sup>PL</sup>...2(T)</b>	GMM2420..MW GMM3020..MW	GMG3020..MS GMM3020..MS	GMG2520..MG GMM3020..MG	GMG3020..R GMM3020..R	-	GMM2020..MT GMM2520..MT GMM3020..MT GMM2020%...MT GMM2520%...MT GMM3020%...MT	GMM2020..NB GMM2520..NB GMM3020..NB	GMM2020..TK GMM2520..TK GMM3020..TK GMM2020%...TK GMM2520%...TK GMM3020%...TK	GMN2..TK GMN3..TK GM%2..TK GM%3..TK	GMN2 GMN2.2 GMN3 GM%2.2 GM%3	GMN2 GMN3
<b>KGM<sup>PL</sup>...2.5</b>	GMM2420..MW GMM3020..MW	GMG3020..MS GMM3020..MS	GMG2520..MG GMM3020..MG	GMG3020..R GMM3020..R	-	GMM2520..MT GMM3020..MT GMM2520%...MT GMM3020%...MT	GMM2520..NB GMM3020..NB	GMM2520..TK GMM3020..TK GMM2520%...TK GMM3020%...TK	GMN3..TK GM%3..TK	GMN3 GM%3	GMN3
<b>KGM<sup>PL</sup>...3(T)</b>	GMM3020..MW GMM4020..MW	GMG3020..MS GMM3020..MS GMG4020..MS GMM4020..MS	GMG3020..MG GMM3520..MG GMG4020..MG GMM4020..MG	GMG3020..R GMM3020..R GMG4020..R GMM4020..R	-	GMM3020..MT GMM3020%...MT	GMM3020..NB	GMM3020..TK GMM3020%...TK	GMN3..TK GMN4..TK GM%3..TK GM%4..TK	GMN3 GMN4 GM%3 GM%4	GMN3 GMN4
<b>KGM<sup>PL</sup>...4(T)</b>	GMM4020..MW GMM5020..MW	GMG4020..MS GMM4020..MS GMG5020..MS GMM5020..MS	GMG4020..MG GMM4020..MG GMG5020..MG GMM5020..MG	GMG4020..R GMM4020..R GMG5020..R GMM5020..R	-	-	-	-	GMN4..TK GM%4..TK	GMN4 GMN5 GM%4	GMN4 GMN5
<b>KGM<sup>PL</sup>...5(T)</b>	GMM5020..MW GMM6020..MW	GMG5020..MS GMM5020..MS GMG6020..MS GMM6020..MS	GMG5020..MG GMM5020..MG GMG6020..MG GMM6020..MG	GMG5020..R GMM5020..R GMG6020..R GMM6020..R	GMGA6020..R	-	-	-	-	GMN5 GMN6	GMN5 GMN6
<b>KGM<sup>PL</sup>...6T</b>	GMM6020..MW	GMG6020..MS GMM6020..MS	GMG6020..MG GMM6020..MG	GMG6020..R GMM6020..R	GMGA6020..R	-	-	-	-	GMN6	GMN6
<b>KGM<sup>PL</sup>...8</b>	GMM8030..MW	-	GMG8030..MG	-	GMGA8030..R	-	-	-	-	-	-

• If using a full-R insert, you need to modify the corner of insert adapter part (dimension A) of toolholder. For recommended cutting conditions, see page G93  
 For recommended cutting conditions of CBN / PCD, see page G91

● : Std. Item    □ : Check Availability

