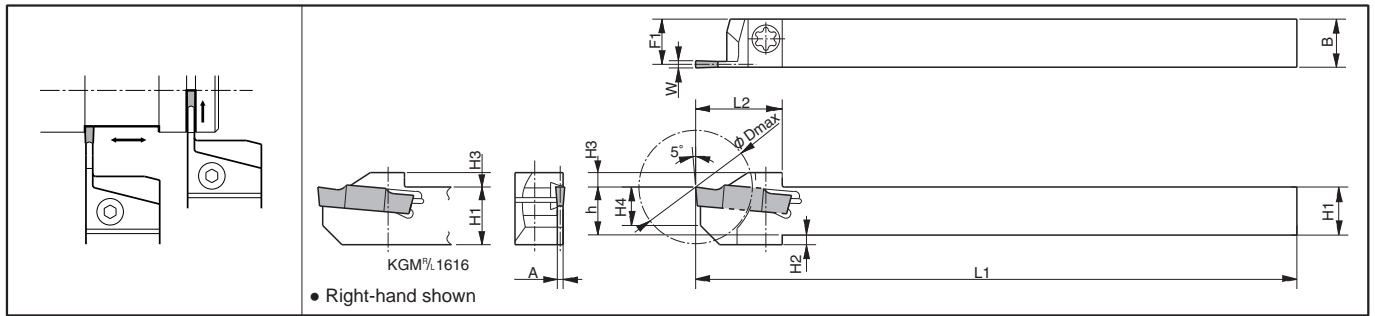


External Grooving Toolholders

KGM (For automatic lathe)

Width: 1.5~4.0mm

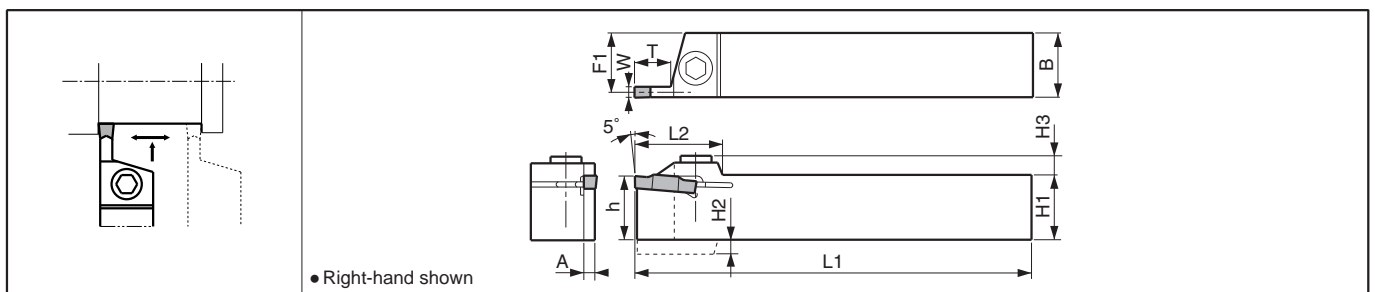


Toolholder Dimensions

Description	Std.		Cutting Dia. øDmax	Dimension (mm)										Width W (mm)		Spare Parts	
	R	L		H1-h	H2	H3	H4	B	L1	L2	F1	A	MIN.	MAX.	Screw	Wrench	
KGM ^{R/L} 1010JX-1.5	●	●	20	10	2	3	8	10	120	18	9.4	1.2	1.5	2.0	SE-40120TR	LTW-15S	
	●	●	25	12		4	10	12		20.5	11.4						
KGM ^{R/L} 1010JX-2	●	●	20	10	2	3	8	10	120	18	9.15	1.7	2.0	3.0	SE-40120TR	LTW-15S	
	●	●	25	12		4	10	12		19	11.15						
KGM ^{R/L} 1616JX-2	●	●	32	16	-	4	9	16	120	24.5	15.15	2.0	2.4	3.0	SE-50125TR	LTW-20	
	●	●	20	10		3	8	10		18	9						
KGM ^{R/L} 1010JX-2.5	●	●	20	10	2	3	8	10	120	18	9	2.0	2.4	3.0	SE-40120TR	LTW-15S	
	●	●	25	12		4	10	12		20.5	11						
KGM ^{R/L} 1616JX-2.5	●	●	32	16	-	4	9	16	120	25.5	15	2.4	3.0	4.0	SE-50125TR	LTW-20	
	●	●	25	12		2	4	10		12	85						19
KGM ^{R/L} 1616JX-3	●	●	32	16	-	4	9	16	120	25.5	14.8	2.4	3.0	4.0	SE-50125TR	LTW-20	
KGM ^{R/L} 1212F-1.5-85	●	●	25	12	2	4	10	12	85	19	11.4	1.2	1.5	2.0	SE-40120TR	LTW-15S	
KGM ^{R/L} 1212F-2-85	●	●	25	12	2	4	10	12	85	19	11.15	1.7	2.0	3.0	SE-40120TR	LTW-15S	
KGM ^{R/L} 1212F-2.5-85	●	●	25	12	2	4	10	12	85	19	11	2.0	2.4	3.0	SE-40120TR	LTW-15S	

KGM

Width: 3.0~8.0mm



Toolholder Dimensions

Description	Std.		Dimension (mm)										Width W (mm)		Spare Parts			
	R	L	H1-h	H2	H3	B	L1	L2	F1	A	T	MIN.	MAX.	Screw		Wrench		
KGM ^{R/L} 1212H-3	●	●	12	4	6	12	100	27	10.8	2.4	9	3.0	3.0	SB-5TR	-	LTW-20	-	
	●	●	16		7	16			14.8									
2020K-3	●	●	20	-	7	20	125	27	18.8	3.4	10	3.0	4.0	-	HH5X16	-	LW-4	
2525M-3	●	●	25		7	25	150		23.8									
2020K-4	●	●	20	-	7	20	125	27	18.3	3.4	10	4.0	5.0	-	HH5X16	-	LW-4	
2525M-4	●	●	25		7	25	150		23.3									
2020K-5	●	●	20	-	7	20	125	27	17.8	4.4	10	5.0	6.0	-	HH5X16	-	LW-4	
2525M-5	●	●	25		7	25	150		22.8									
3232P-5	●	●	32	-	10.5	32	170	40	29.8	6.0	25	8.0	8.0	-	HH5X25	-	LW-5	
2525M-8	●	●	25		7.5	25	150		22.0									
3232P-8	●	●	32	-	10.5	32	170	40	29.0	6.0	25	8.0	8.0	-	HH6X25	-	LW-5	

* Dimension T shows available grooving depth.

* 4.0mm width Insert can be installed in KGM/1212H-3, but is not recommended due to the toolholder's rigidity.

● : Std. Item