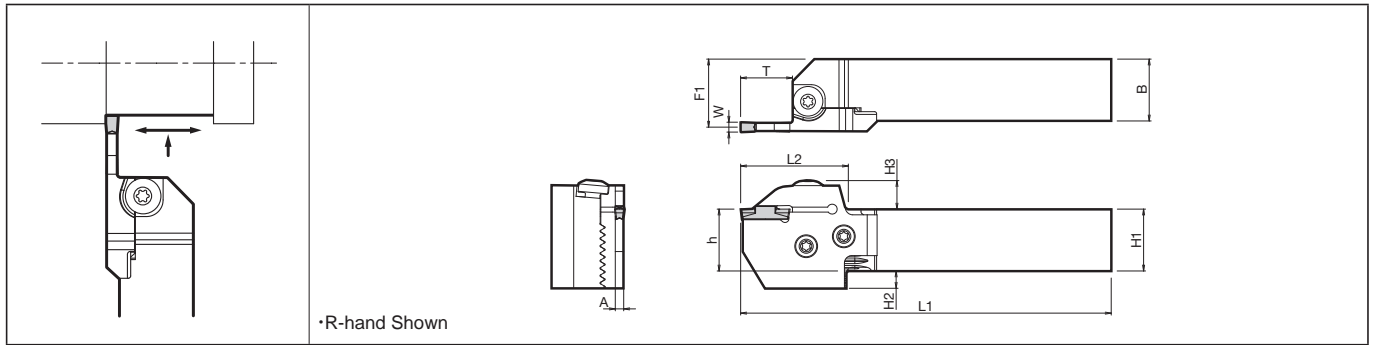
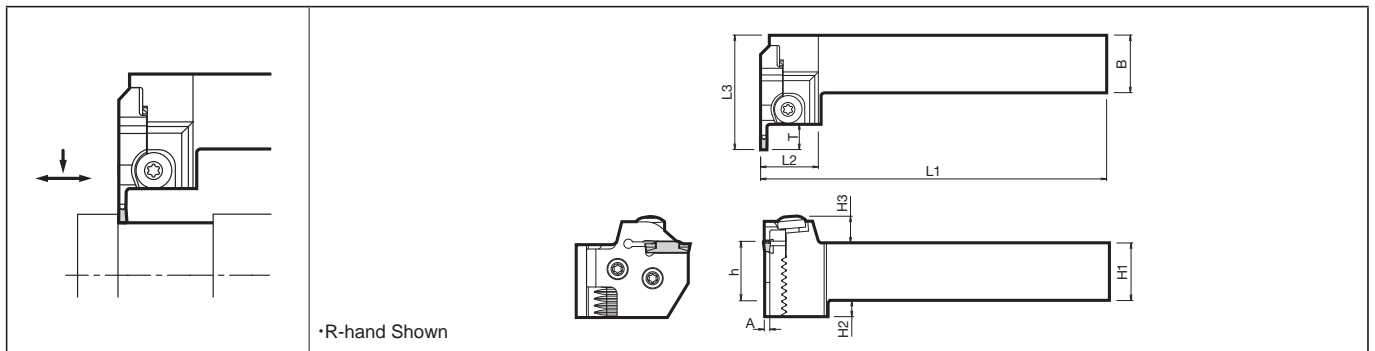


KGD-S (0° separate type)



KGDS-S (90° separate type)



Toolholder Dimensions (Toolholder+Blade)

Shank Angle	Width (mm)	Max. depth of cut (mm)	Unit Description (Standard Stock Description)	Std.		Toolholder Description ● G28	Blade Description ● G28	Dimension (mm)										Width W (mm)	
				R	L			H1=h	H2	H3	B	L1	L2	L3	F1	A	T	MIN	MAX
0°	2	17	KGD ⁹⁰ /L 2020X-2T17S	●	●	KGD ⁹⁰ /L.2020-C	KGD ⁹⁰ /L.-2T17-C	20	12	11.6	20	122	39.9	23.4	1.7	17	2.0	3.0	
			2525X-2T17S	●	●	KGD ⁹⁰ /L.2525-C		25	7		25	147		28.4					
		10	KGD ⁹⁰ /L 2020X-3T10S	●	●	KGD ⁹⁰ /L.2020-C	KGD ⁹⁰ /L.-3T10-C	20	12		20	115		23.0					
			2525X-3T10S	●	●	KGD ⁹⁰ /L.2525-C		25	7		25	140		28.0					
			3232X-3T10S	●	●	KGD ⁹⁰ /L.3232-C		32	-		32	160		33.0					
		20	KGD ⁹⁰ /L 2020X-3T20S	●	●	KGD ⁹⁰ /L.2020-C	KGD ⁹⁰ /L.-3T20-C	20	12		20	125		23.0					
	2525X-3T20S		●	●	KGD ⁹⁰ /L.2525-C		25	7	25	150	28.0								
	3232X-3T20S		●	●	KGD ⁹⁰ /L.3232-C		32	-	32	170	33.0								
	10		KGD ⁹⁰ /L 2020X-4T10S	●	●	KGD ⁹⁰ /L.2020-C	KGD ⁹⁰ /L.-4T10-C	20	12	20	115	22.5							
			2525X-4T10S	●	●	KGD ⁹⁰ /L.2525-C		25	7	25	140	27.5							
			3232X-4T10S	●	●	KGD ⁹⁰ /L.3232-C		32	-	32	160	32.5							
	20	KGD ⁹⁰ /L 2020X-4T20S	●	●	KGD ⁹⁰ /L.2020-C	KGD ⁹⁰ /L.-4T20-C	20	12	20	125	22.5								
		2525X-4T20S	●	●	KGD ⁹⁰ /L.2525-C		25	7	25	150	27.5								
		3232X-4T20S	●	●	KGD ⁹⁰ /L.3232-C		32	-	32	170	32.5								
		25	KGD ⁹⁰ /L 2020X-4T25S	●	●	KGD ⁹⁰ /L.2020-C	KGD ⁹⁰ /L.-4T25-C	20	12	20	130	22.5							
			2525X-4T25S	●	●	KGD ⁹⁰ /L.2525-C		25	7	25	155	27.5							
			3232X-4T25S	●	●	KGD ⁹⁰ /L.3232-C		32	-	32	175	32.5							
	10	10	KGD ⁹⁰ /L 2020X-5T10S	●	●	KGD ⁹⁰ /L.2020-C	KGD ⁹⁰ /L.-5T10-C	20	12	20	115	22.0							
			2525X-5T10S	●	●	KGD ⁹⁰ /L.2525-C		25	7	25	140	27.0							
			3232X-5T10S	●	●	KGD ⁹⁰ /L.3232-C		32	-	32	160	32.0							
		25	KGD ⁹⁰ /L 2020X-5T25S	●	●	KGD ⁹⁰ /L.2020-C	KGD ⁹⁰ /L.-5T25-C	20	12	20	130	22.0							
			2525X-5T25S	●	●	KGD ⁹⁰ /L.2525-C		25	7	25	155	27.0							
			3232X-5T25S	●	●	KGD ⁹⁰ /L.3232-C		32	-	32	175	32.0							
	90°	3	10	KGDS ⁹⁰ /L 2020X-3T10S	●	●	KGDS ⁹⁰ /L.2020-C	KGDS ⁹⁰ /L.-3T10-C	20	12	20	125	25.1	49.7	-	2.4	10	3.0	4.0
2525X-3T10S				●	●	KGDS ⁹⁰ /L.2525-C		25	7	25	150								

Note) 1. When using the toolholder in normal mounting position, the lower jaw of toolholder may interfere with the tool presetter.

2. The toolholder and blade Description are printed on the toolholder body. (Unit description is not printed.)

KGDS-S: R-hand Blade for R-hand Toolholder, L-hand Blade for L-hand Toolholder.

KGDS-S: L-hand Blade for R-hand Toolholder, R-hand Blade for L-hand Toolholder.

Combination of the optional toolholder (KGD...-C) and blade (KGD...-C) (both separately sold) can make up the corresponding assembly part.

Make sure of the "hand of toolholder" and "hand of blade".

3. Dimension T: Maximum depth to which processing can be made. (If the dimension T is 20 mm or more, the maximum depth of groove made by the 2-corner insert will be 18 mm.)

● : Std. Item

