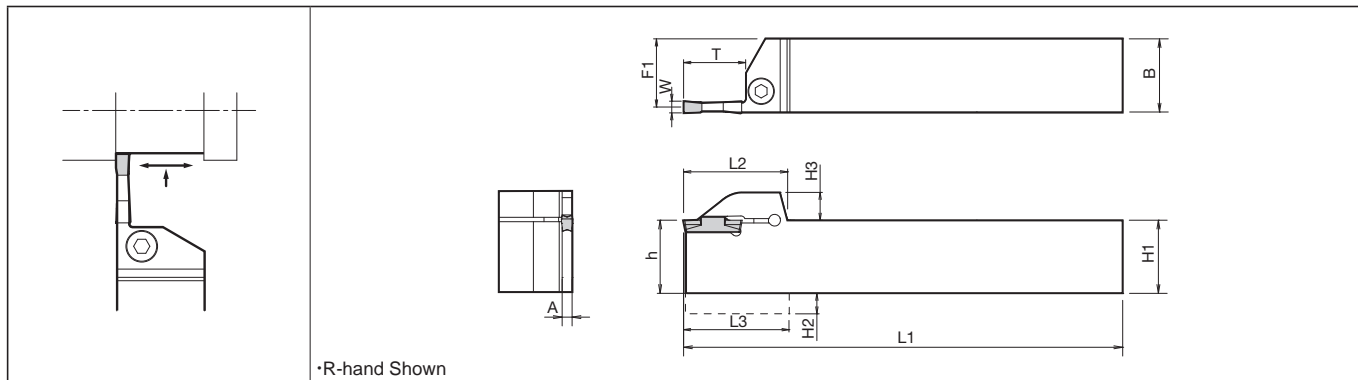


Toolholders for Grooving and Cut-off

KGD (Integral Type)



Toolholder Dimensions

Width (mm)	Max. depth of cut (mm)	Description	Std.		Dimension (mm)											Width W (mm)		Spare Parts						
			R	L	H1=h	H2	H3	B	L1	L2	L3	F1	A	T	MIN	MAX	Clamp Bolt	Wrench						
2	6	KGD ^{9/L} 1616H-2T06	●	●	16	4.0	9.5	16	100	27.7	28.0	15.2	1.7	6	2.0	3.0	HH5X16	LW-4						
		2020K-2T06	●	●	20	-		20	125	28.0	-	19.2												
		2525M-2T06	●	●	25	-		25	150	28.0	-	24.2												
	10	KGD ^{9/L} 1616H-2T10	●	●	16	4.0		16	100	30.2	30.5	15.2		10										
		2020K-2T10	●	●	20	-		20	125	30.5	-	19.2												
		2525M-2T10	●	●	25	-		25	150	30.5	-	24.2												
	17	KGD ^{9/L} 1616H-2T17	●	●	16	4.0		16	100	31.2	31.5	15.2		17										
		2012K-2T17	●	●	20	-		12	125	-	-	11.2												
		2020K-2T17	●	●	20	-		20	125	32.5	-	19.2												
3	6	KGD ^{9/L} 1616H-3T06	●	●	16	4.0	16	100	27.7	28.0	14.8	2.4	6	3.0	4.0	HH5X16	LW-4							
		2020K-3T06	●	●	20	-	20	125	28.0	-	18.8													
		2525M-3T06	●	●	25	-	25	150	28.0	-	23.8													
	10	KGD ^{9/L} 1616H-3T10	●	●	16	4.0	16	100	30.2	30.5	14.8		10											
		2020K-3T10	●	●	20	-	20	125	30.5	-	18.8													
		2525M-3T10	●	●	25	-	25	150	30.5	-	23.8													
	20	KGD ^{9/L} 1616H-3T20	●	●	16	4.0	16	100	34.2	34.5	14.8		20											
		2012K-3T20	●	●	20	-	12	125	34.5	-	10.8													
		2020K-3T20	●	●	20	-	20	125	-	-	18.8													
4	10	KGD ^{9/L} 2020K-4T10	●	●	20	-	20	125	30.5	-	18.3	3.4	10	4.0	5.0	HH5X16	LW-4							
		2525M-4T10	●	●	25	-	25	150	30.5	-	23.3													
		KGD ^{9/L} 2020K-4T20	●	●	20	-	20	125	34.5	-	18.3													
	20	2525M-4T20	●	●	25	-	25	150	35.5	-	23.3													
		KGD ^{9/L} 2525M-4T25	●	●	25	-	25	150	40.5	-	23.3													
		25	KGD ^{9/L} 2525M-4T25	●	●	25	-	25	150	40.5	-		23.3											
	10			KGD ^{9/L} 2020K-5T10	●	●	20	-	20	125	30.5		-					17.8	4.4	10	5.0	6.0	HH5X16	LW-4
				2525M-5T10	●	●	25	-	25	150	30.5		-					22.8						
		KGD ^{9/L} 2020K-5T17	●	●	20	-	20	125	37.5	-	17.8													
17	2525M-5T17	●	●	25	-	25	150	37.5	-	22.8														
	25	KGD ^{9/L} 2525M-5T25	●	●	25	-	25	150	40.5	-	22.8													
			15	KGD ^{9/L} 2525M-6T15	●	●	25	-	25	150	32.5	-	22.4	5.3	15	6.0	6.0	HH5X25		LW-4				
30					KGD ^{9/L} 2525M-6T30	●	●	25	-	25	150	45.5	-											
	25	KGD ^{9/L} 2525M-8T25				●	●	25	7.0	25	150	43.3	44.2											
			32	3232P-8T25		●	●	32	-	32	170	43.3	-	29.0										

Note) 1. Dimension T: Maximum depth to which processing can be made. (If the dimension T is 20 mm or more, the maximum depth of groove made by the 2-edge insert will be 18 mm.)

● : Std. Item
□ : Check Availability