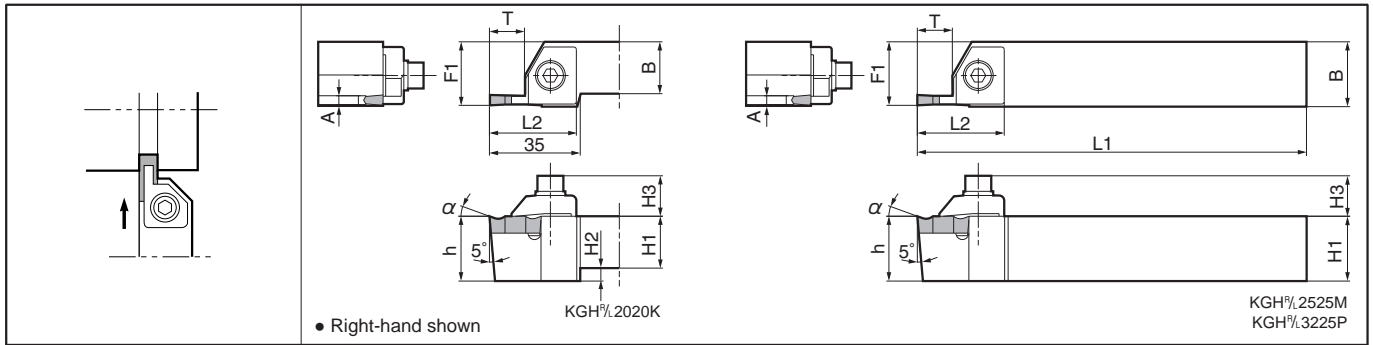
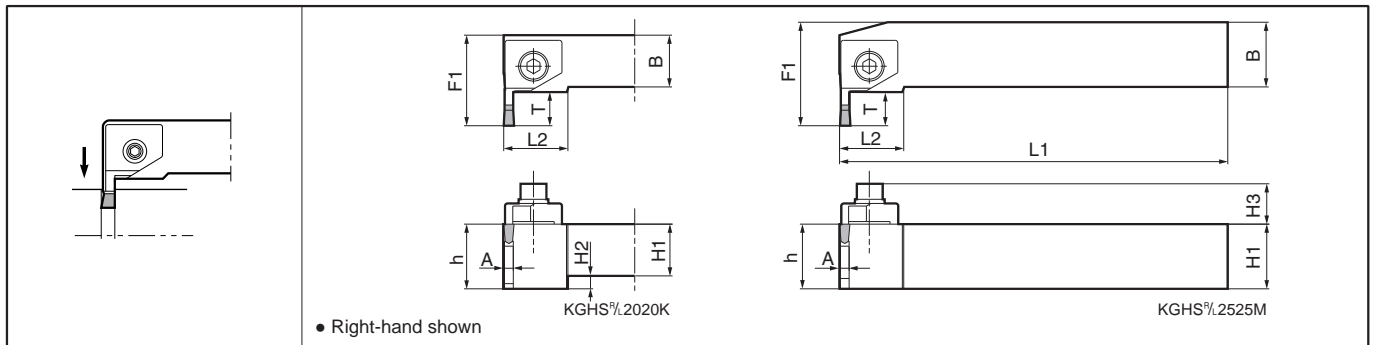


KGH



KGHS



Toolholder Dimensions

Description	Std.		Dimension (mm)									Spare Parts				
	R	L	H1=h	H2	H3	B	L1	L2	F1	A	T	Clamp	Clamp Bolt	Washer	Spring	Wrench
KGH %L	●●	●●	20	5	15.6	20	125	33.5	24.5-24.8	3.4	13	CGH-1 %L	HH6X25	W-6	SP-6	LW-5
	●●	●●	25	-	15.6	25	150	33.5	24.5-24.8	3.4	13					
	●●	●●	20	5	-	20	125	33.5	25.0-25.8	4.2	13					
	●●	●●	25	-	15.6	25	150	33.5	25.0-25.8	4.2	13					
	●●	●●	32	-	-	25	170	41	25.0-25.8	4.2	13					
	●●	●●	20	5	15.6	20	125	33.5	24.5-25.0	5.8	13					
	●●	●●	25	-	15.6	25	150	33.5	24.5-25.0	5.8	13					
KGHS %L	●●	●●	20	5	15.6	20	125	25	35	3.4	13	CGH-1 1/2r	HH6X25	W-6	SP-6	LW-5
	●●	●●	25	-	15.6	25	150	25	40	3.4	13					
	●●	●●	20	5	-	20	125	25	35	4.2	13					
	●●	●●	25	-	15.6	25	150	25	40	4.2	13					
	□□	□□	25	-	15.6	25	150	25	40	5.8	13					

• Dimension T shows available grooving depth

• Dimension F1 of KGH %L Toolholder depends on the insert's edge width.

• Clamp: KGH %L ... CGH-○ R for Right-hand Toolholder, and CGH-○ L for Left-hand Toolholder.

KGHS %L ... CGH-○ L for Right-hand Toolholder, and CGH-○ R for Left-hand Toolholder.

Rake Angle (α) after Installment of GH / GHU insert

GH ○○○○ - ○○		GHU ○○○○	
α	Insert Grades	α	Insert Grades
0°	A65, A66N	10°	TN60 CR9025
10°	TC40		
20°	TN90, TC60 PR630, PR930 KW10		

● : Std. Item □ : Check Availability