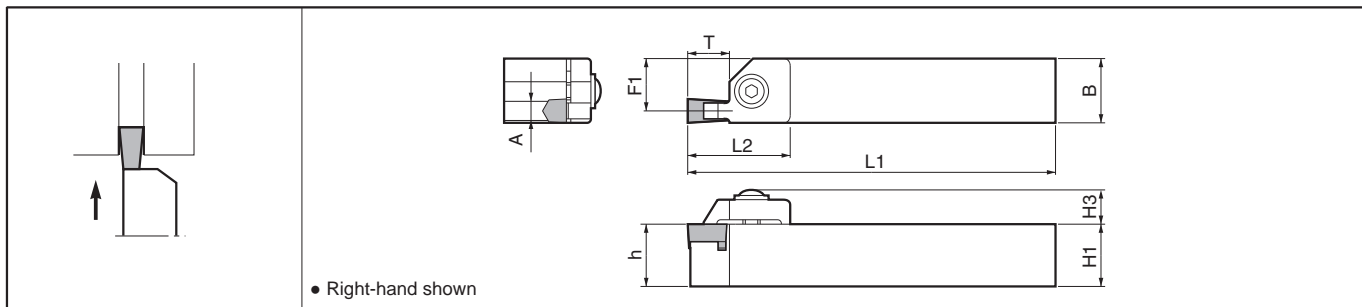


External Shallow Grooving Toolholders [Ceramic TG Insert]

для заказа - kyocera@kyocera-tools.ru www.kyocera-tools.ru

KN91



• Right-hand shown

Toolholder Dimensions

Description	Std.		Dimension (mm)								Spare Parts				
	R	L	H1=h	H3	B	L1	L2	F1	A	T	Clamp	Clamp Bolt	Washer	Spring	Wrench
	KN91^{R/L}	<input type="checkbox"/>	<input type="checkbox"/>												
44-4	<input type="checkbox"/>	<input type="checkbox"/>									CE-111 / 121	BH8X30	W-8	SP-8	LW-5
44-5	<input type="checkbox"/>	<input type="checkbox"/>	25	16	25	150	40	22.5	3.4	15					
44-7	<input type="checkbox"/>	<input type="checkbox"/>					42	22.5	4.4	17					
	<input type="checkbox"/>	<input type="checkbox"/>					42	21	6.4	17	CE-131 / 141				

• Dimension T shows available grooving depth.

Clamp: KN91^{R/L} 44-4 / 5 ... CE-111 for Right-hand Toolholder, and CE-121 for Left-hand Toolholder.
KN91^{R/L} 44-7 ... CE-131 for Right-hand Toolholder, and CE-141 for Left-hand Toolholder.

Applicable Inserts

Description	L (mm)	H (mm)
GS91-4	12	5.0
GS91-5~GS91-8	15	7.5

Material	Classification of usage
P Carbon Steel / Alloy Steel	
M Stainless Steel	
K Cast Iron	●
N Non-ferrous Metals	☉
S Titanium Alloy	
H Hard materials (under 40HRC)	●
Hard materials (over 40HRC)	○

Insert	Description	Dimension (mm)		Ceramic	PVD Ceramic	Applicable Toolholder	Ref. Page for Toolholder
		W	rε				
	GS 91-4	4.0	0.5	<input type="checkbox"/>		KN91^{R/L}...4	G19
	91-5	5.0					
	91-6	6.0	0.8			KN91^{R/L}...5	
	91-7	7.0				KN91^{R/L}...7	
	91-8	8.0		<input type="checkbox"/>			

Recommended Cutting Conditions

Workpiece Material	Recommended Insert Grade (Cutting Speed m/min)	f (mm/rev)	
	Ceramic	GS91-4 GS91-5 GS91-6	GS91-7 GS91-8
Cast Iron (FC / FCD, etc.)	★ 150~300	0.03~0.07	0.04~0.08
Hard Materials	★ 40~80	0.02~0.05	0.04~0.07

★ : 1st Recommendation

● : Std. Item □ : Check Availability R : Std. Item (R-hand Only) L : Std. Item (L-hand Only)

для заказа - kyocera@kyocera-tools.ru www.kyocera-tools.ru

Inserts are sold in 10 piece boxes.

G19

G



Grooving

