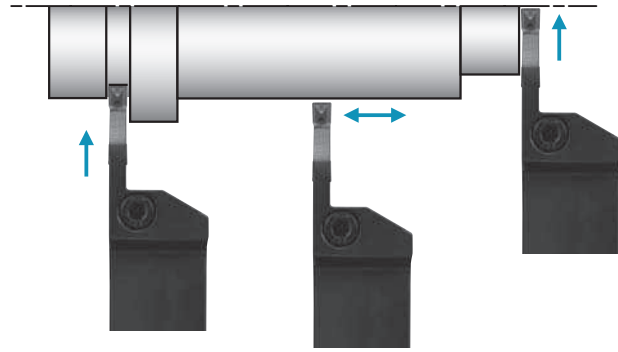


# Summary of KGD Type Grooving

## External Grooving (G22~G31)

• Integral Type

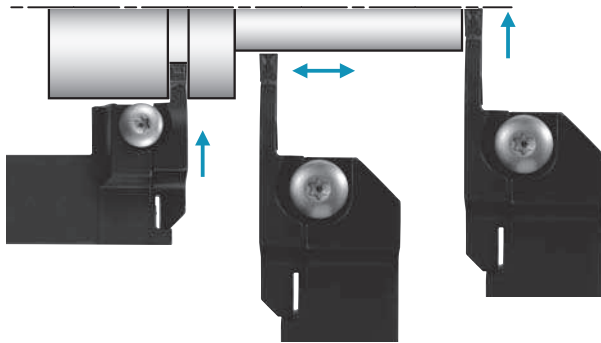
Type	KGD
Width (mm)	2.0~8.0
Grooving Depth (mm)	6~30
Ref. Page	<b>G26</b>



• Separate Type

Type	* KGDS-S
Width (mm)	3.0
Grooving Depth (mm)	10
Ref. Page	<b>G27</b>

\* The separate type toolholders can accept all the inserts if their hand is matching.

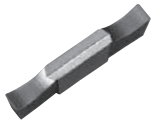


• Separate Type

Type	* KGD-S
Width (mm)	2.0~5.0
Grooving Depth (mm)	10~25
Ref. Page	<b>G27</b>

\* The separate type toolholders can accept all the inserts if their hand is matching.

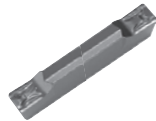
Low Cutting Force  
**GS**



Low Feed  
**GL**



For general purpose  
**GM**



High feed rate  
**PH**



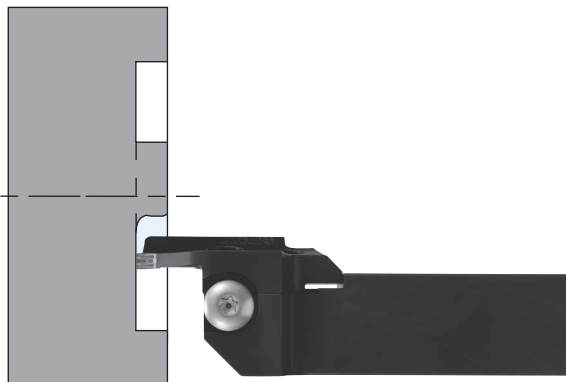
General cut-off  
**PM**



Copying  
**CM**



## Face Grooving $\phi 25\sim$ (G68~G75)



Grooving and Longitudinal turning  
**GM**



Deep grooving and Longitudinal turning  
**DM**



Type	* KGDF
Min. Face Groove Dia.	$\phi 25$
Width (mm)	3.0~6.0
Grooving Depth (mm)	13~32
Ref. Page	<b>G70</b>

\* The separate type toolholders can accept all the inserts if their hand is matching.

G

Grooving