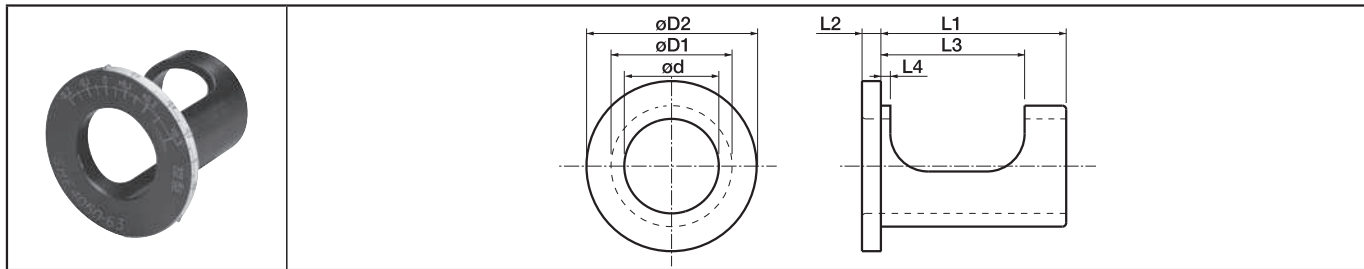


Adjustable Sleeve

SHE [For cutting dia. / center height adjustment]

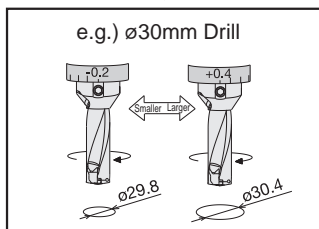


Sleeve Dimensions

Description	Std.	Dimension (mm)							* Cutting Dia. Adjustable Range	Center Height Adjustable Range
		ϕd	$\phi D1$	$\phi D2$	L1	L2	L3	L4		
SHE 2025-43	●	20	25	41	43	4	36	3.0	+0.4~-0.2	+0.2~-0.15
2532-48	●	25	32	49	48	6	38	2.5	+0.4~-0.2	+0.2~-0.15
3240-53	●	32	40	58	53	6	43	2.5	+0.4~-0.2	+0.2~-0.15
4050-63	●	40	50	74	63	6	49	3.0	+0.6~-0.2	+0.2~-0.2

● Diameter Adjustment Range adjusts the cutting diameter.

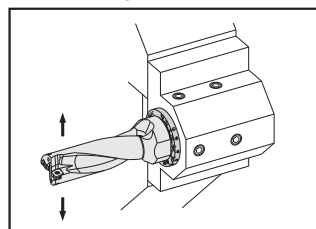
1. Diameter Adjustment ~For Machining Center~



● Diameter Adjustment Range (mm)

Shank Dia.	Adjustment Range
$\phi 20$	+0.4~-0.2
$\phi 25$	
$\phi 32$	
$\phi 40$	+0.6~-0.2

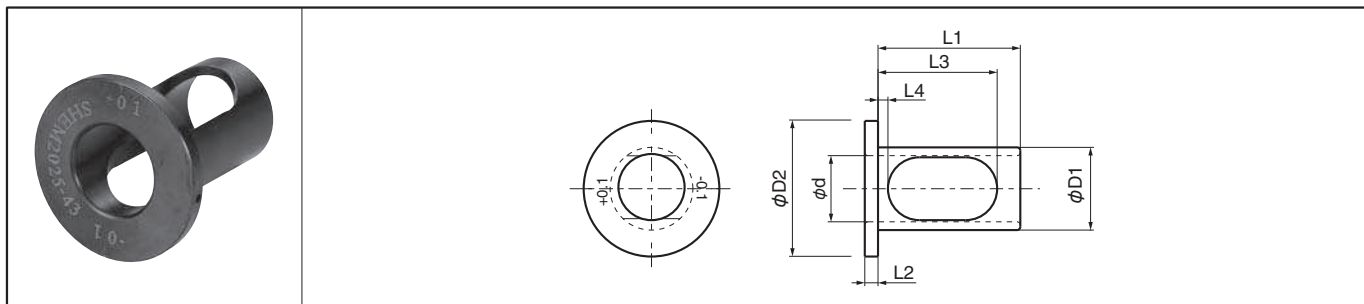
2. Center Height Adjustment ~Relief trouble by height adjustment at lathes~



● Center Height Adjustment Range (mm)

Shank Dia.	Adjustment Range
$\phi 20$	+0.2~-0.15
$\phi 25$	
$\phi 32$	
$\phi 40$	+0.3~-0.2

SHEM [For cutting dia. adjustment]



Sleeve Dimensions

Description	Std.	Dimension (mm)							*Dia. Adjustment Range
		ϕd	$\phi D1$	$\phi D2$	L1	L2	L3	L4	
SHEM 2025-43	●	20	25	41	43	4	36	3.0	+0.1, -0.1
2032-43	●		32	49		6		2.5	+0.1, -0.1

● Diameter Adjustment Range adjusts the cutting diameter.

Applications of Eccentric Sleeves (SHE/SHEM) (For Side Lock Toolholders)

- When using with a boring bar
 - Simple adjustment of diameter when fine boring is performed by the machining center.
- When using with an indexable end mill
 - Adjustment of groove width (If in use with 1 edge, the groove width can be adjusted within the range of diameter allowed by the eccentric sleeve.)
 - Widening of groove width (If in use with 2 or more edges, only widening is possible for groove width.) Although multiple edges are used, Feed should be input as 1 edge.
- When using with a MEF counterboring end mill
 - Adjustment of counterbore diameter (If in use with 1 edge, the diameter can be adjusted within the range of diameter allowed by the eccentric sleeve.)
 - Broadening of counterbore diameter (If in use with 2 or more edges, only broadening is possible for the diameter.) Although multiple edges are used, Feed should be input as 1 edge.

● How to adjust the processing diameter (See SHE ● K35, SHEM ● K41)

- Match the cutting edge (of the reference edge) to the "0" point of diameter adjustment scale of eccentric sleeve.
- For 1 edge
 - Set the point within the range allowed by the diameter adjustment scale of eccentric sleeve.
- For multiple edges
 - Set the point at "0" or more on the diameter adjustment scale of eccentric sleeve.
 - A negative value cannot be specified.

● : Std. Item



Boring