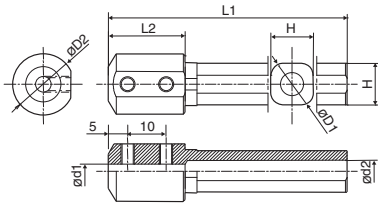
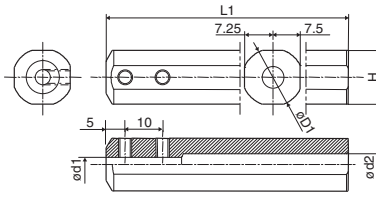


Sleeves for Boring Bars

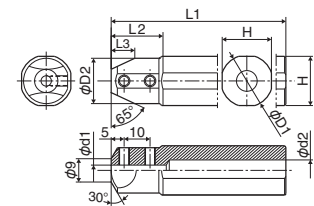
Sleeves for 2-Edge Tip-Bar



(2 Edges Tip-Bar installation side) Fig.1



(2 Edges Tip-Bar installation side) Fig.2



(2 Edges Tip-Bar installation side) Fig.3

Description	Std.	Dimension (mm)							Drawing	Spare Parts		Applicable Machine Manufacturer	Ref. Page for 2 Edges Tip-Bar (Ref. Page for Other Application 2 Edges Tip-Bar)
		* ød1	øD1	øD2	ød2	H	L1	L2		L3	Screw		
PSH 0212-80	●	2	12	16	6	11	80	20	-	Fig.1	HS3×4P	LW-1.5	(General use)
0312-80	●	3											
0412-80	●	4											
0512-80	●	5											
0612-80	●	6											
0712-80	●	7											
PSH 0216-100	●	2	16	-	6	15	100	-	-	Fig.2	HS3×4P	LW-1.5	
0316-100	●	3											
0416-100	●	4											
0516-100	●	5											
0616-100	●	6											
0716-100	●	7											
PSH 0220-120	●	2	20	17.5	6	19	120	20	11	Fig.3	HS3×4P	LW-1.5	Amada Wasino Eguro Citizen Machinery Precision Tsugami Miyano (General use)
0320-120	●	3											
0420-120	●	4											
0520-120	●	5											
0620-120	●	6											
0720-120	●	7											
PSH 0225.0-135	●	2	25	18	6	24	135	23	11.5	Fig.3	HS3×4P	LW-1.5	Amada Wasino Eguro Precision Tsugami Miyano (General use)
0325.0-135	●	3											
0425.0-135	●	4											
0525.0-135	●	5											
0625.0-135	●	6											
0725.0-135	●	7											
PSH 0219-120	●	2	19.05	17.5	6	18	120	20	11	Fig.3	HS3×4P	LW-1.5	Citizen Machinery
0319-120	●	3											
0419-120	●	4											
0519-120	●	5											
0619-120	●	6											
0719-120	●	7											
PSH 0225-120	●	2	25.4	18	6	24.4	120	23	11.5	Fig.3	HS3×4P	LW-1.5	Internal Threading (HPT Type) ⇒ J24
0325-120	●	3											
0425-120	●	4											
0525-120	●	5											
0625-120	●	6											
0725-120	●	7											
PSH 0222-135	●	2	22	18	6	21	135	22	11.5	Fig.3	HS3×4P	LW-1.5	Star Micronics Nomura VTC
0322-135	●	3											
0422-135	●	4											
0522-135	●	5											
0622-135	●	6											
0722-135	●	7											
PSH 0223-120	●	2	23	18	6	22	120	22	11.5	Fig.3	HS3×4P	LW-1.5	Nomura VTC
0323-120	●	3											
0423-120	●	4											
0523-120	●	5											
0623-120	●	6											
0723-120	●	7											

* : Length of ød1...20 mm (PH02, PH03, PH04 type)
 ...25 mm (PH05, PH06, PH07 type)

• Choose sleeves (ød1) to meet with øD dimension of 2 Edges Tip-Bar.
 • Machine manufactures in random order.

● : Std. Item □ : Check Availability

F



Boring