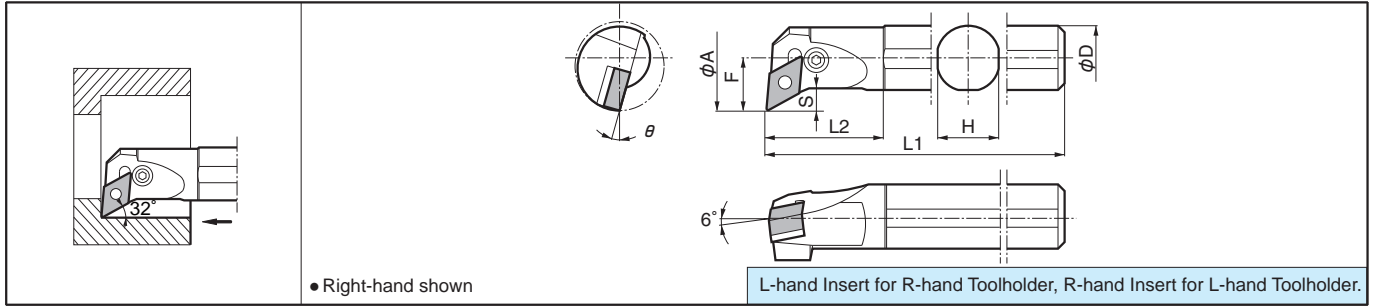


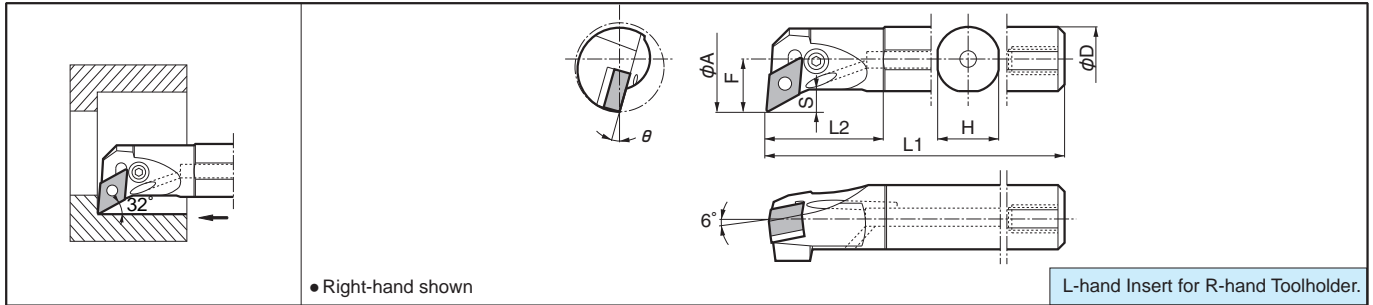
S...PDUN11 (Copying)

Max. Overhang Length L/D=-3



A...PDUN11 Twin-Hole Bar (Copying: with Coolant Hole)

Max. Overhang Length L/D=-3



Toolholder Dimensions

Description	(Previous Description)	Std.		Min. Bore Dia.	Dimension (mm)							Standard Corner-R (r)	Spare Parts					
		R	L		øA	øD	H	L1	L2	F	S		θ	Lever	Lock Screw	Shim	Shim Pin	Punch
		S20Q -PDUN^{R/L}11-27	PDUN^{R/L} 2720B-11	●	●	27	20	19	180	35	16		7.6	17°	0.4			
S25R -PDUN^{R/L}11-32	3225B-11	●	●	32	25	24	200	40	17	7.6	15°							
S32S -PDUN^{R/L}11-40	4032B-11	●	●	40	32	31	250	45	22	8.5	12°							
A20Q -PDUN^{R/L}11-27	PDUN^{R/L} 2720B-11H	●		27	20	19	180	35	16	7.6	17°	0.4						
A25R -PDUN^{R/L}11-32	3225B-11H	●		32	25	24	200	40	17	7.6	15°							
A32S -PDUN^{R/L}11-40	4032B-11H	●		40	32	31	250	45	22	8.5	12°							

Applicable Inserts

Applications	Finishing	Finishing-Medium	Medium-Roughing	Finishing	Medium					
Ref. Page	B20	B20	B21	B23	B23					
Insert										
Toolholder										
...-PDUN ^{R/L} 11-...	DNMG1104..	DNMG1104..	DNMG1104..	DNGG1104..	DNGG1104..					

For recommended cutting conditions, see page [F82-F83](#)

Applicable Coolant Sleeve / Joint

Toolholder	Applicable Coolant Sleeve	Applicable Coolant Joint
A20Q -PDUN^{R/L}11-27	SHC2040-70, SHC2050-95	SJS-8
A25R -PDUN^{R/L}11-32	SHC2540-70, SHC2550-95	
A32S -PDUN^{R/L}11-40	-	

• For Coolant Sleeve, Coolant Joint, see [F78-F79](#)

● : Std. Item