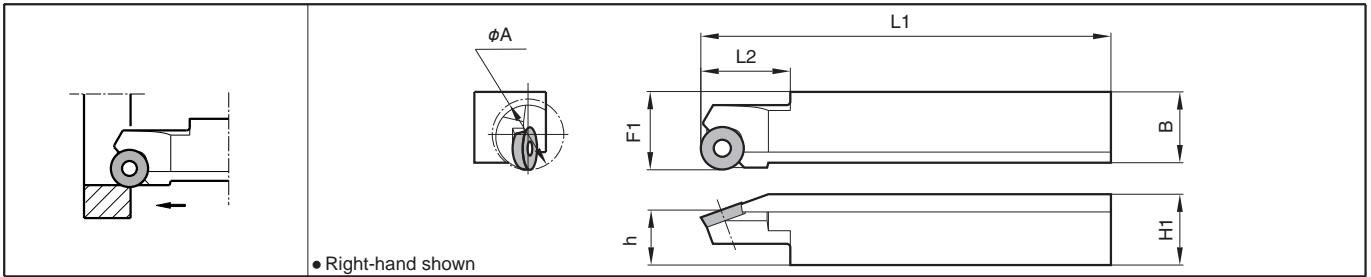


Boring Toolholders for Bearing Machining (Square Shank)

SRCP-B (Boring)



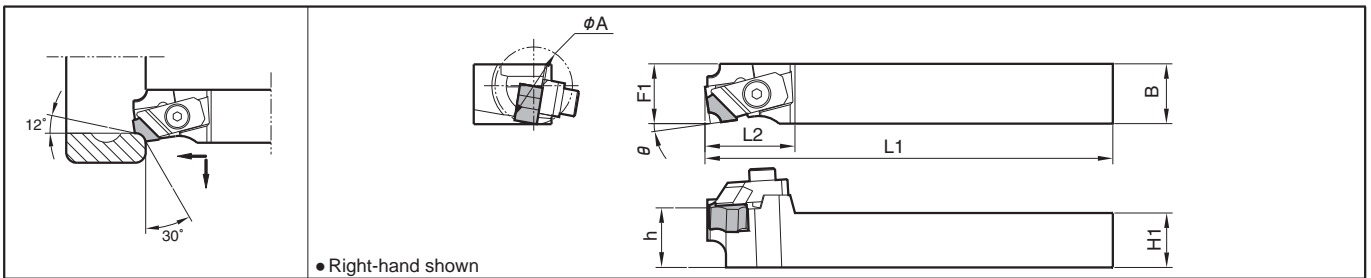
Toolholder Dimensions

Description	Std.		Min. Bore Dia.	Dimension (mm)							Spare Parts			Applicable Inserts ➔ B80
	R	L		ϕA	H1	h	B	L1	L2	F1	Clamp Screw	Wrench		
	SRCP^{R/L} 2020B-12-A20 2525B-16-A32	●	●	20	20	15.5	20	125	25	22		SB-4TR	FT-15	
	●	●	32	25	20	25	150	31	27		SB-5090TR	-	LTW-20	

Applicable Inserts

Insert	Description	Dimension (mm)			Angle (°)
		A	T	ϕd	α
	RPMT 1203M0-BB 1604M0-BB	12.0	3.18	4.4	11°
		16.0	4.76	5.5	

CBSN-B (Internal Round Chamfering)



Toolholder Dimensions

Description	Std.		Min. Bore Dia.	Dimension (mm)							θ	Spare Parts		Applicable Inserts ➔ B80
	R	L		ϕA	H1	h	B	L1	L2	F1		Clamp Set	Wrench	
	CBSN^{R/L} 2020B-12-A20 2525B-12-A20	●	●	20	20	21	20	125	32	20	25	9°	CP-RC ^{R/L}	

* Clamp Set: RP-RCR for R-hand Toolholder, and CP-RCL for L-hand Toolholder.

Applicable Inserts

Insert	Description	Dimension (mm)				Angle (°)
		A	T	B	$r\epsilon$	θ
	SNMF 120406-21	12.70	4.76	1.5	0.6	21°
	120410-21			3.0	1.0	
	120416-21			3.1	1.6	
	120421-21			3.2	2.1	
	120426-21			3.3	2.6	

● : Std. Item □ : Check Availability