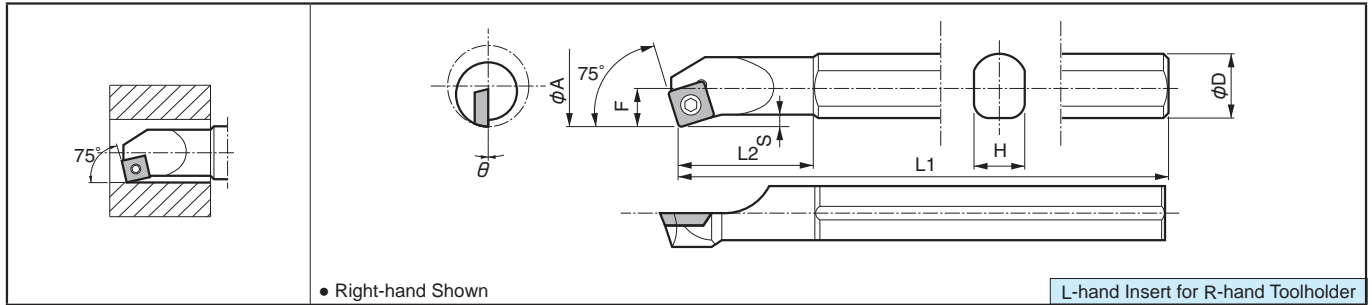


Boring Bar [SP Insert]

S...SSKP (Boring)

Max. Overhang Length L/D=-3



Toolholder Dimensions

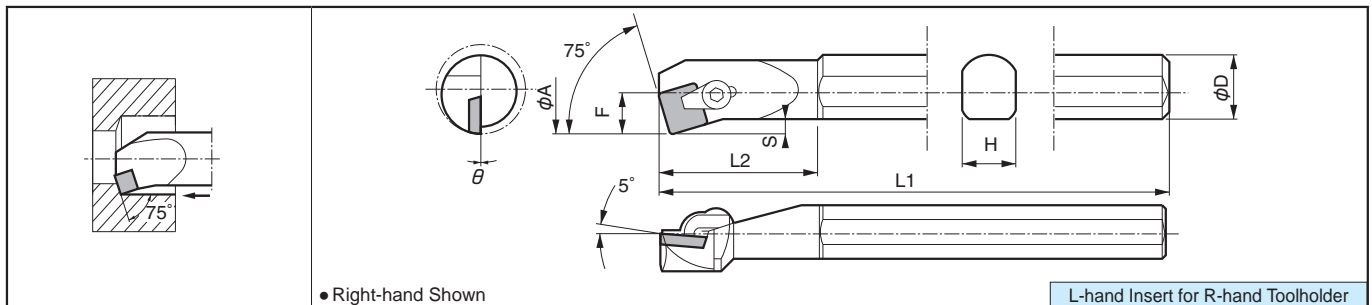
Description	(Previous Description)	Std.		Min. Bore Dia.	Dimension (mm)						θ	Standard Corner-R (r)	Spare Parts	
		R	L		φA	φD	H	L1	L2	F			S	Clamp Screw
S16Q-SSKP ^{R/L} 09-20	SSKP ^{R/L} 2016B-09	●		20	16	14	180	30	10	2.0	-3°	0.8	SB-4TR	FT-15
S20R-SSKP ^{R/L} 09-25	2520B-09	●		25	20	18	200	35	12.5	2.5	0°			
S25X-SSKP ^{R/L} 12-32	3225B-12	□		32	25	23	220	45	16	3.5	0°	0.8	GS-50S	LW-3
S32S-SSKP ^{R/L} 12-40	4032B-12	□		40	32	30	250	60	20	4.0			GS-50	

Applicable Inserts

Applications	Finishing												
Ref. Page	B61												
Insert													
Toolholder													
....SSKP ^{R/L} 09...	SPGH0903..												
....SSKP ^{R/L} 12...	SPGH1203..												

S...CSKP (Boring)

Max. Overhang Length L/D=-3



Toolholder Dimensions

Description	(Previous Description)	Std.		Min. Bore Dia.	Dimension (mm)						θ	Standard Corner-R (r)	Spare Parts				
		R	L		φA	D	H	L1	L2	F			S	Clamp Set	Wrench	Shim	Shim Screw
S16N-CSKP ^{R/L} 09-20	CSKP ^{R/L} 2016B-09	●		20	16	14	160	40	10	2.0	0°	0.8	CPS-2	FH-2.5	-	-	-
S20Q-CSKP ^{R/L} 09-27	2720B-09	●		27	20	18	180	45	13.5	3.5							
S25X-CSKP ^{R/L} 12-34	3425B-12	●		34	25	23	220	60	17	4.5	0°	0.8	CPS-3	-	LW-3	-	-
S32S-CSKP ^{R/L} 12-43	4332B-12	●		43	32	30	250	75	21.5	5.5					KPS-42	SP3X10	

Applicable Inserts

Applications	Medium	Medium	Finishing-Medium	Cast Iron	Cast Iron	Non-ferrous Metals					
Ref. Page	B61	B61	B61	B61	B92	C23					
Insert	G	Standard		Without Chipbreaker	Ceramic	PCD					
Toolholder											
....CSKP ^{R/L} 09...	SPMR0903..	SPMR0903..	SPGR0903..	SPMN0903.. SPGN0903..	SPGN0903..	-					
....CSKP ^{R/L} 12...	SPMR1203..	SPMR1203..	SPGR1203..	SPMN1203.. SPGN1203..	SPGN1203..	SPGN1203..					

For recommended cutting conditions, see page [F82~F83](#)

● : Std. Item □ : Check Availability