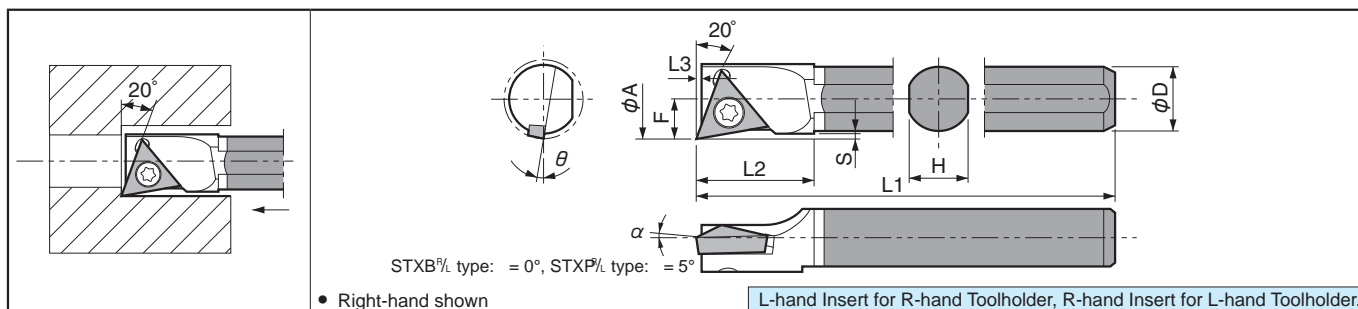


# Boring Bar [TB □□ / TP □□ Insert]

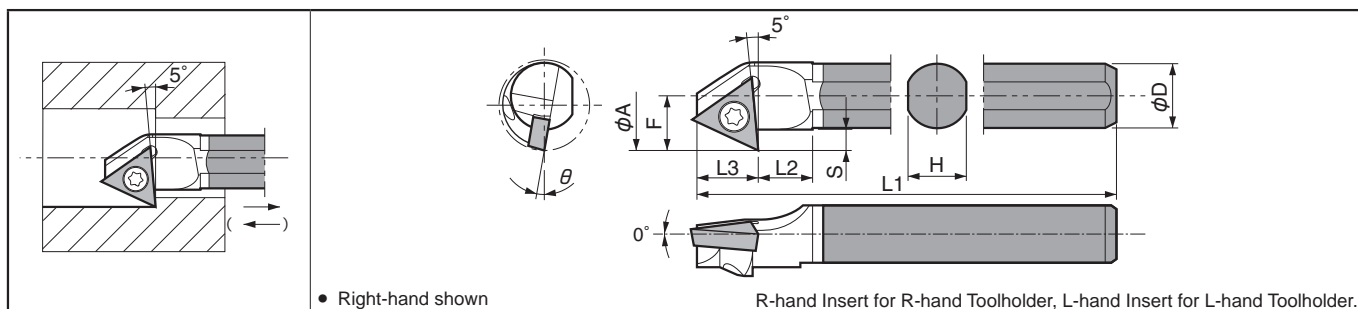
## C...STXP(B) Carbide Shank Bar (Boring / Internal Facing)

Max. Overhang Length L/D=--7



## C...STZB Carbide Shank Bar (Back Boring)

Max. Overhang Length L/D=--7



\* When using R-hand Toolholder, use R-hand insert if machining from back to front in this direction (→). Use L-hand insert if machining from front to back in this direction (←).

### Toolholder Dimensions

Description	(Previous Description)	Dimension (mm)										θ	Spare Parts				
		Std.		Min. Bore Dia. φA	φD	H	L1	L2	L3	F	S		Standard Corner-R (°)	Clamp Screw	Wrench		
		R	L														
C06J-STXB <sup>φ/L</sup> 06-075	STXB <sup>φ/L</sup> 07506B-06W	●	●	7.5	6	5.4	110	11	0.5	3.75	10°	0.03	SB-1STR	FT-6			
C08X-STXP <sup>φ/L</sup> 08-09	STXP <sup>φ/L</sup> 09008B-08W	●	●	9.0	8	7.0	143	14	0.6	4.6					0.5	SB-1TR	FT-8
C10X-STXP <sup>φ/L</sup> 09-11	11010B-09W	●	●	11.0	10	9.0	164	17								5.6	
C06J-STZB <sup>φ/L</sup> 06-085	STZB <sup>φ/L</sup> 08506B-06W	●	●	8.5	6	5.4	110	5	5.7	5.1					2.0	SB-1STR	FT-6

### Applicable Inserts

Applications Ref. Page	Minute ap B63, B66	Finishing B66	Finishing B63	Finishing-Medium B66	Finishing B63, B67	Finishing / Precision B68	Low Feed / Precision B68	Soft Steel Finishing B66	Cast Iron B63, B68	Non-ferrous Metals C19-C21
Insert	CF	GP	DP	HQ	φ	φ-L-FSF	F <sup>φ</sup> -L-USF	XP	Without Chipbreaker	PCD
Toolholder										
Applications Ref. Page	Hard Materials C12									
Insert	CBN									
Toolholder										
Applications Ref. Page										
Insert										
Toolholder										

### C...STXP(B) Type Boring Bar Cutting Conditions

For recommended cutting conditions, see page F82-F83

Toolholder	Insert Description (Grade)	Vc (m/min)	ap (mm)	f (mm/rev)	Coolant
C06J-STXB <sup>φ/L</sup> 06-075	TBGT0601003 <sup>L/R</sup> (PR930)	30~100	0.02~0.1	0.02~0.04	Yes
C08X-STXP <sup>φ/L</sup> 08-09	TPGH080201 <sup>L/R</sup> (PR930)	30~100	0.05~0.15	0.03~0.08	Yes
C10X-STXP <sup>φ/L</sup> 09-11	TPGH090201 <sup>φ/L</sup> (PR930)	30~100	0.05~0.15	0.03~0.08	Yes

(Workpiece Material: Alloy Steel)

● : Std. Item □ : Check Availability