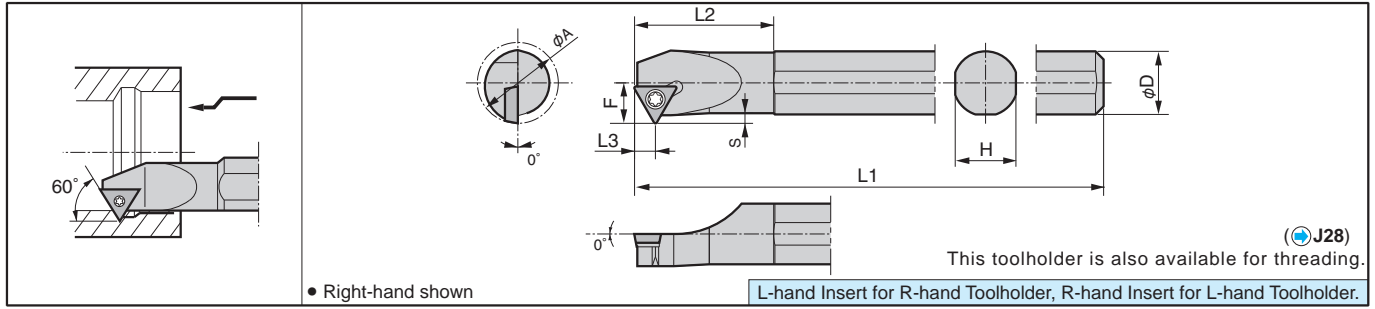


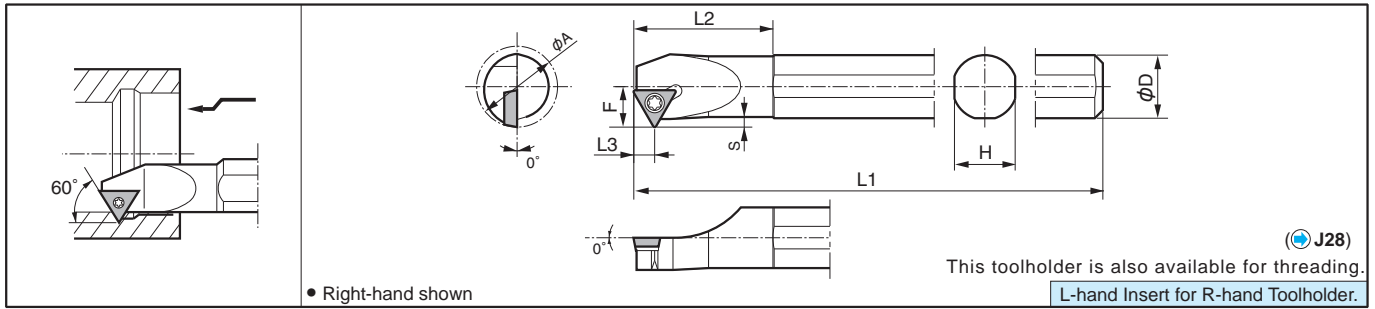
S...STWP-E Excellent Bar (Copying)

Max. Overhang Length L/D=--5



S...STWP Steel Bar (Copying)

Max. Overhang Length L/D=--3



● Toolholder Dimensions

Description	(Previous Description)	Std.		Min. Bore Dia.	Dimension (mm)							θ	Standard Corner-R (rc)	Spare Parts	
		R	L		øA	øD	H	L1	L2	L3	F			S	Clamp Screw
S10M-STWP^{R/L} 11-12E		●	●	12	10	9.2	150	23	5.5	6	1.0	0°	0.1	SB-3STR	FT-10
S12M-STWP^{R/L} 11-16E		●	●	16	12	11	150	30		8	1.5				
S16R-STWP^{R/L} 11-20E		●	●	20	16	15	200	35	10	2.0					
S20X-STWP^{R/L} 11-25E		●	●	25	20	19	220	40	12.5	2.5					
S20X-STWP^{R/L} 16-25E		●	●	25	20	19	220	40	12.5	2.5					
S25X-STWP^{R/L} 16-32E	●	●	32	25	23	270	42	7.7	14	4.0	0°	0.8	SB-4TR	FT-15	
S10M-STWP^{R/L} 11-12	SIT^{R/L} 1210-11	●		12	10	9.2	150	23	5.5	6	1.0	0°	0.1	SB-3STR	FT-10
S12M-STWP^{R/L} 11-16	SIT^{R/L} 1612-11	●		16	12	11	150	30		8	1.5				
S16Q-STWP^{R/L} 11-20	2016-11	●		20	16	15	180	35		10	2.0				
S20R-STWP^{R/L} 11-25	2520-11	●		25	20	19	200	40		12.5	2.5				

● Applicable Inserts

Applications	Finishing	Finishing-Medium	Finishing	Finishing / Precision	Medium cutting	Low Feed / Precision	Soft Steel Finishing	Soft Steel Finishing-Medium	Cast Iron
Ref. Page	B66	B66	B67	B68	B67	B68	B66	B66	B68
Insert	GP	HQ	^{R/L}	^{R/L} -FSF	^{R/L} -H	^{R/L} -USF	XP	XQ	Without Chipbreaker
Toolholder									
S10M-STWP^{R/L} 11-12(E)	-	-	TPGH1102..	-	-	-	-	-	TPGB1102..
---STWP^{R/L} 11---	TPMT1103..	TPMT1103..	TPGH1103..	TPET1103..	TPGH1103..	TPET1103..	TPMT1103..	TPMT1103..	TPGB1103..
---STWP^{R/L} 16---	TPMT1603..	TPMT1603..	TPGH1603..	-	TPGH1603..	-	TPMT1603..	TPMT1603..	TPGB1603..
Applications	Non-ferrous Metals	Hard Materials							
Ref. Page	C20, C21	C12							
Insert	PCD	CBN							
Toolholder									
S10M-STWP^{R/L} 11-12(E)	-	-							
---STWP^{R/L} 11---	TPMH1103.. TPGB1103..	TPGB1103..							
---STWP^{R/L} 16---	TPMH1603.. TPGB1603..	TPGB1603..							

For recommended cutting conditions, see page ● F82~F83

