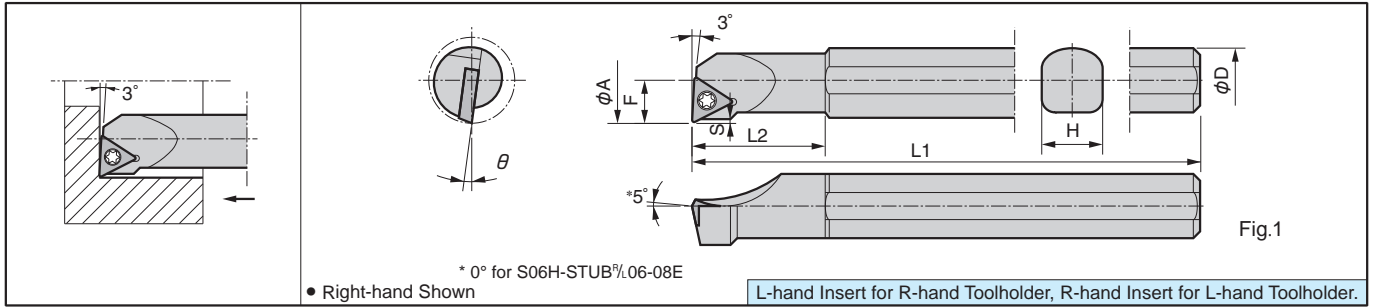


# Boring Bar [TB □□ / TP □□ Insert]

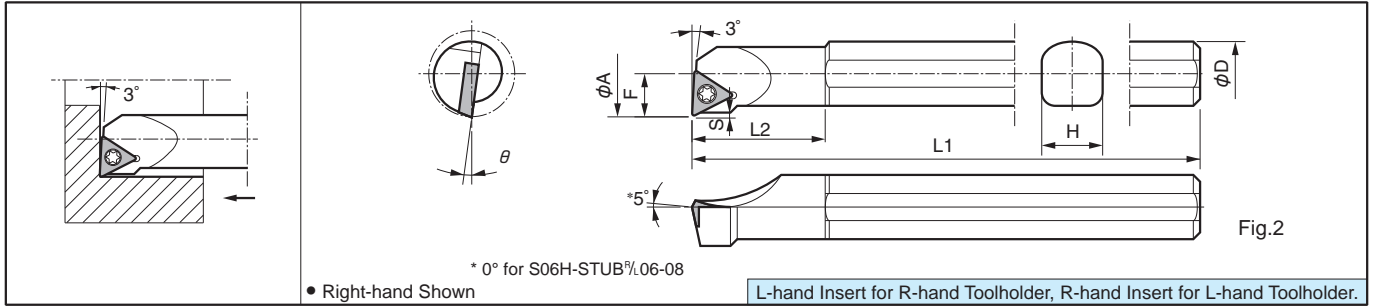
## S...STUP(B)-E Excellent Bar (Boring)

Max. Overhang Length L/D=--5



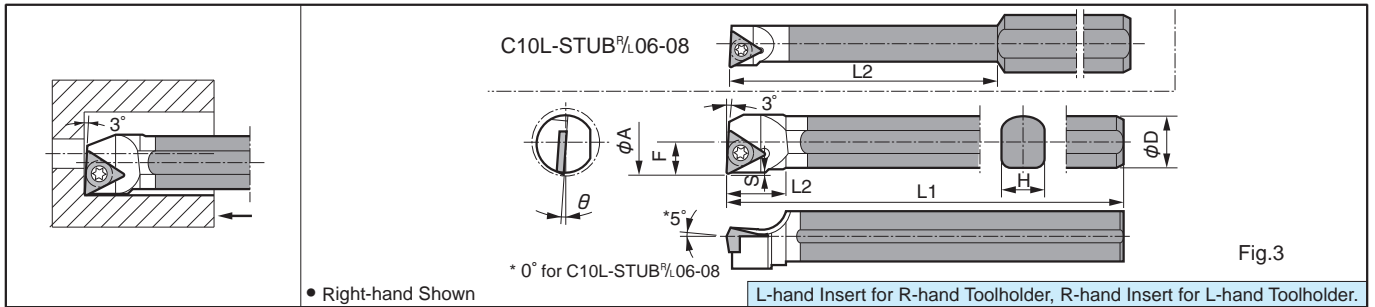
## S...STUP(B) Steel Bar (Boring)

Max. Overhang Length L/D=--3



## C...STUP(B) Carbide Shank Bar (Boring)

Max. Overhang Length L/D=--7



• Toolholder Dimensions [Will be switched to Dynamic Bar, see **F85-F88** (Alternative Toolholder Reference Table for Boring Bar)].

Description	(Previous Description)	Std.		Min. Bore Dia.	Dimension (mm)								θ	Standard Corner-R (rε)	Drawing	Spare Parts	
		R	L		φA	φD	H	L1	L2	L3	L4	F				S	Clamp Screw
S06H-STUB <sup>R/L</sup> 06-08E	STUB <sup>R/L</sup> 0806B-06E	<input type="checkbox"/>	<input type="checkbox"/>	8	6	5.4	100	12	-	-	4	0.6	12°	0.2	Fig.1	SB-1STR	FT-6
S08K-STUB <sup>R/L</sup> 08-10E	STUP <sup>R/L</sup> 1008B-08E	<input type="checkbox"/>	<input type="checkbox"/>	10	8	7	125	17	-	-	5	0.4	10°	0.4		SB-1TR	FT-6
S10M-STUB <sup>R/L</sup> 09-12E	1210B-09E	<input type="checkbox"/>	<input type="checkbox"/>	12	10	9	150	20	-	-	6	0.5	8°	0.4		SB-2TR	FT-8
S12M-STUB <sup>R/L</sup> 09-16E	1612B-09E	<input type="checkbox"/>	<input type="checkbox"/>	16	12	11	150	25	-	-	8	0.5	5°	0.4		SB-3TR	FT-10
S10M-STUB <sup>R/L</sup> 11-12E	1210B-11E	<input type="checkbox"/>	<input type="checkbox"/>	12	10	9	150	20	-	-	6	0.5	8°	0.4			
S12M-STUB <sup>R/L</sup> 11-14E	1412B-11E	<input type="checkbox"/>	<input type="checkbox"/>	14	12	11	150	25	-	-	7	0.6	7°	0.4			
S12M-STUB <sup>R/L</sup> 11-16E	1612B-11E	<input type="checkbox"/>	<input type="checkbox"/>	16	12	11	150	25	-	-	8	0.5	5°	0.4			
S16R-STUB <sup>R/L</sup> 11-18E	1816B-11E	<input type="checkbox"/>	<input type="checkbox"/>	18	16	15	200	27	-	-	9	0.7	4°	0.4		SB-4TR	FT-15
S16R-STUB <sup>R/L</sup> 11-20E	2016B-11E	<input type="checkbox"/>	<input type="checkbox"/>	20	16	15	200	27	-	-	10	0.9	3°	0.4			
S20X-STUB <sup>R/L</sup> 11-25E	2520B-11E	<input type="checkbox"/>	<input type="checkbox"/>	25	20	19	220	33	-	-	12.5	0.9	0°	0.8		Fig.2	SB-4TR
S20X-STUB <sup>R/L</sup> 16-25E	2520B-16E	<input type="checkbox"/>	<input type="checkbox"/>	25	20	19	220	33	-	-	12.5	0.9	0°	0.8			
S25X-STUB <sup>R/L</sup> 16-32E	3225B-16E	<input type="checkbox"/>	<input type="checkbox"/>	32	25	23.4	270	42	-	-	16	0.6	0°	0.8			
S06H-STUB <sup>R/L</sup> 06-08	STUB <sup>R/L</sup> 0806B-06	<input type="checkbox"/>	<input type="checkbox"/>	8	6	5.4	100	12	-	-	4	0.6	12°	0.2	Fig.2	SB-1STR	FT-6
S08K-STUB <sup>R/L</sup> 08-10	STUP <sup>R/L</sup> 1008B-08	<input type="checkbox"/>	<input type="checkbox"/>	10	8	7	125	17	-	-	5	0.4	10°	0.4		SB-1TR	FT-6
S10M-STUB <sup>R/L</sup> 09-12	1210B-09	<input type="checkbox"/>	<input type="checkbox"/>	12	10	9	150	20	-	-	6	0.5	8°	0.4		SB-2TR	FT-8
S12M-STUB <sup>R/L</sup> 09-16	1612B-09	<input type="checkbox"/>	<input type="checkbox"/>	16	12	11	150	25	-	-	8	0.5	5°	0.4		SB-3TR	FT-10
S16Q-STUB <sup>R/L</sup> 11-20	2016B-11	<input type="checkbox"/>	<input type="checkbox"/>	20	16	15	180	27	-	-	10	0.9	3°	0.4			
S20R-STUB <sup>R/L</sup> 11-25	2520B-11	<input type="checkbox"/>	<input type="checkbox"/>	25	20	19	200	33	-	-	12.5	0.9	0°	0.4		SB-4TR	FT-15
S25X-STUB <sup>R/L</sup> 16-32	3225B-16	<input type="checkbox"/>	<input type="checkbox"/>	32	25	23.4	220	42	-	-	16	0.6	0°	0.8			

□ : Check Availability