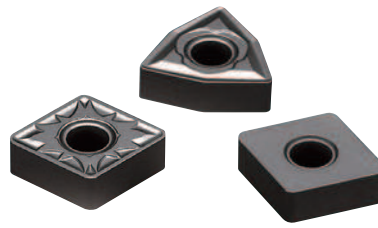




CVD Coated Carbide for Gray and Nodular Cast Iron

CA45series



CA4515

- ▶ Preferred for stability
- ▶ Wide application range for continuous to heavy interrupted cutting

CA4505

- ▶ Suitable for high-speed and efficient cutting
- ▶ Improved tool life through superior wear resistance

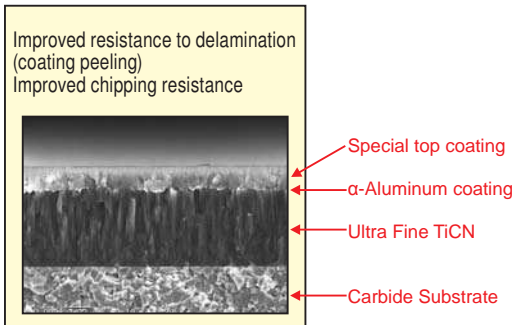
New Coating Technology

- ▶ New special coating structure

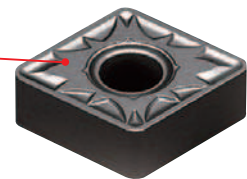
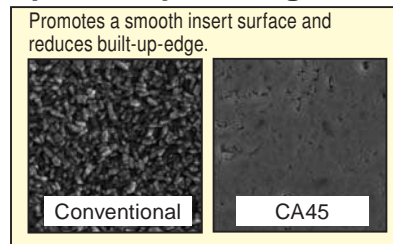
Long and stable tool life is attained through the use of a multi-layer coating structure with a dedicated substrate for cast iron turning.

- ▶ Special top coating

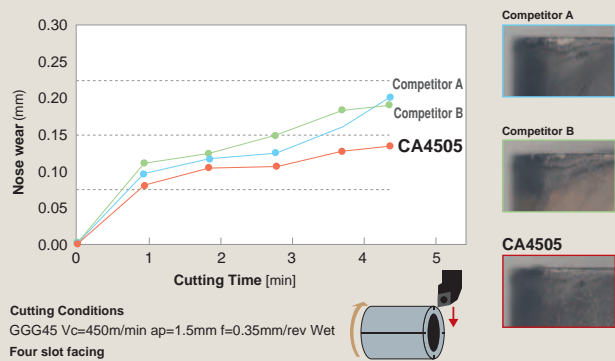
The innovative surface treatment applied to the top layer of coating prevents adhesion.



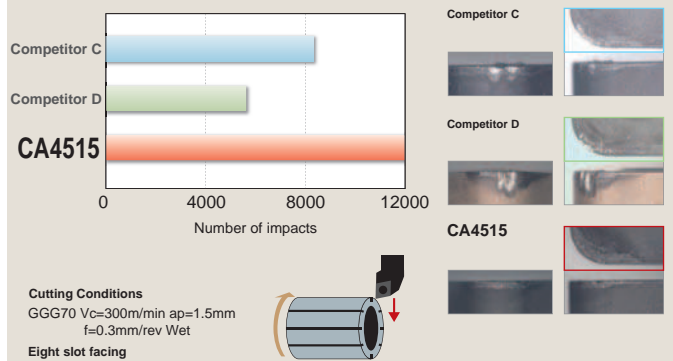
Special top coating and surface finish



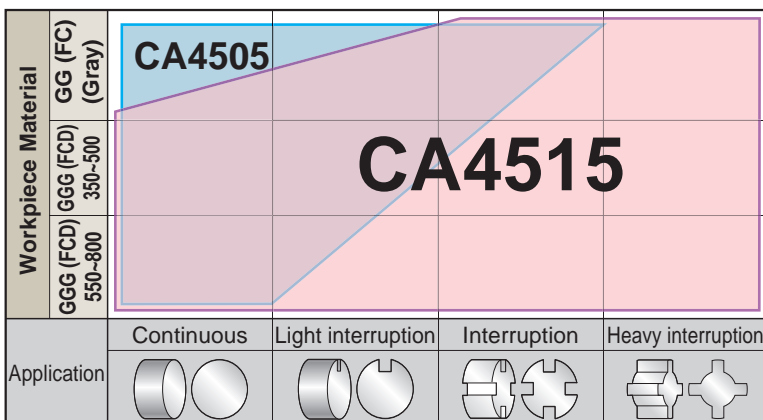
Wear resistance comparison [GGG 45]



Chipping resistance comparison [GGG 70]



Material Application Map



Chipbreaker Selection (Negative Inserts)

