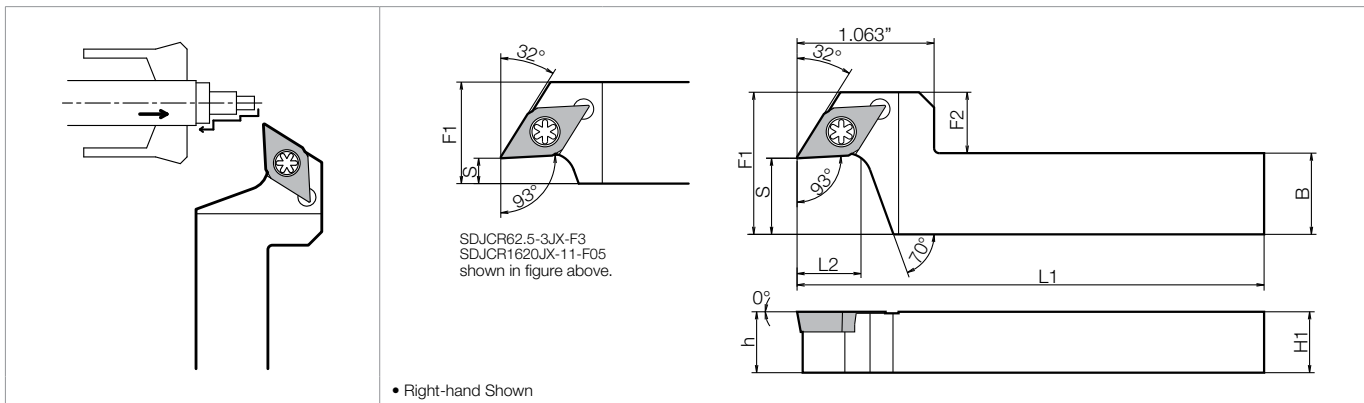


## SDJC (External / Copying)



### Toolholder Dimensions

Part Number	Stock	Unit	Dimensions							Standard Corner-R(r)	Spare Parts	
			H1=h	B	L1	L2	F1	F2	S		Clamp Screw	Wrench
SDJCR 52-3JX-F3 52-3JX-F9 62.5-3JX-F3 62.5-3JX-F9	●	inch	0.500	0.625	4.750	0.488	0.687	0.062	0.187	0.008	SB-4085TR	FT-15
	●		0.500	0.625	4.750	0.488	1.125	0.500	0.562			
	●		0.625	0.750	4.750	0.488	0.750	-	0.187			
	●		0.625	0.750	4.750	0.488	1.125	0.375	0.562			
SDJCR 1216JX-11-F05 1216JX-11-F15 1620JX-11-F05 1620JX-11-F15	○	mm	12	16	120	12.6	18	2	5	0.2	SB-4085TR	FT-15
	○		12	16	120	12.6	28	12	15			
	○		16	20	120	12.6	20	-	5			
	○		16	20	120	12.6	28	8	15			

### Applicable Inserts

Application	Minute D.O.C.	Finishing	Finishing	Finishing	Finishing-Medium	Finishing-Medium	Finishing	Finishing / Precision	Low Feed	Low Feed / Precision
Ref. Page	● B59	● B59	● B60	● B60	● B60	● B60	● B62	● B62	● B63, B64	● B65
Insert	CF	GF	WP (Wiper)	PP	GK	GQ	R-F	R-FSF	(E/F) R-U	FR-USF
Toolholder										
Application	Low Feed	Low Feed / Precision	Low Carbon Steel / Finishing	Low Carbon Steel / Finishing-Medium	Stainless Steel	Cast Iron	Non-ferrous Metals	Non-ferrous Metals	Non-ferrous Metals	Hard materials
Ref. Page	● B64	● B64	● B61	● B61	● B61	● B65	● B65	● B65	● C25	● C15
Insert	(E/F)R-J	FR-JSF	XP	XQ	MQ	Without Chipbreaker	AH	R-A3	PCD	CBN
Toolholder										
SDJCR...-3JX-F... SDJCR...-11-F...	DC_T325..	DCET325..	DCMT325..	DCMT325..	DCMT325..	DCGW325..	DCGT325..	DCGT325..	DCMT325..	DCMW325..

When using WP chipbreaker, program corrections are required. ● F44

Recommended Cutting Conditions ● E46

### Goose-neck Designed for Multiple Passes, Both Roughing & Finishing!

