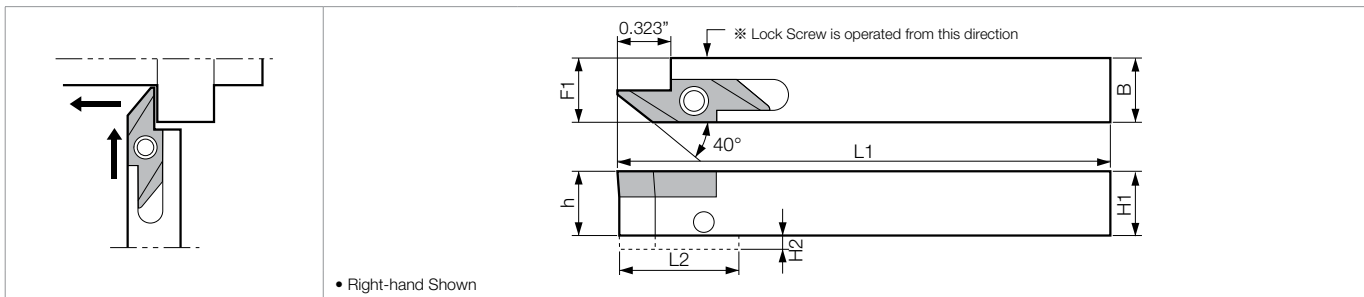
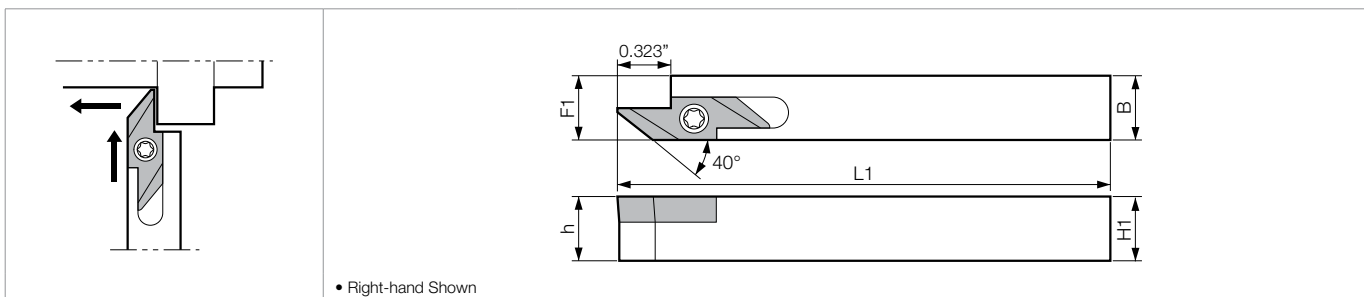


## AABW Back Clamp (Edge Width: 0.185" • Depth 0.197" MAX)



## SABW Screw Clamp (Edge Width: 0.185" • Depth 0.197" MAX)

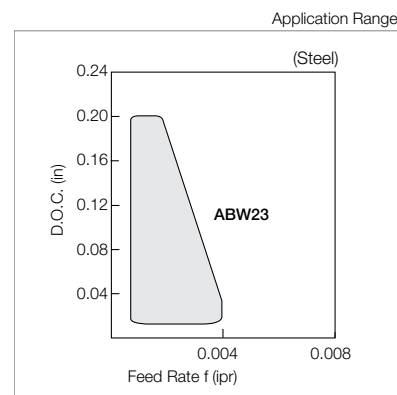


### Toolholder Dimensions

Part Number	Stock	Unit	Dimensions						Standard Corner-R(ре)	Spare Parts			
			H1=h	H2	B	L1	L2	F1		Anchor Pin	Lock Screw	Clamp Screw	Wrench
AABWR 6-23JXF	●	inch	0.375	-	0.375	4.750	-	0.383	0.006	LPA-11	HSB4X8R	-	FH-2
8-23JXF	●		0.500	-	0.500	4.750	-	0.508	0.006	LPA-13			
10-23JXF	●		0.625	-	0.625	4.750	-	0.633	0.006	LPA-17			
AABWR 1010JX-50F	○	mm	10	-	10	120	-	10.2	0.15	LPA-11	HSB4X8R	-	FH-2
1212JX-50F	○		12	-	12	120	-	12.2	0.15	LPA-13			
1616JX-50F	●		16	-	16	120	-	16.2	0.15	LPA-17			
SABWR 6-23JXF	●	inch	0.375	-	0.375	4.750	-	0.383	0.006	-	-	SB-3080TR	FT-10
8-23JXF	●		0.500	-	0.500	4.750	-	0.508					
10-23JXF	●		0.625	-	0.625	4.750	-	0.633					
SABWR 1010JX-50F	○	mm	10	-	10	120	-	10.2	0.15	-	-	SB-3080TR	FT-10
1212JX-50F	○		12	-	12	120	-	12.2					
1616JX-50F	○		16	-	16	120	-	16.2					
SABWR 2020K-50F	○		20	-	20	125	-	20.2	0.15	-	-	SB-3080TR	FT-10

### Applicable Inserts

Insert	Part Number	Corner-R re : mm (inch)	Reference Page
	ABW 23R5005	0.05 (0.002)	B86
	23R5015	0.15 (0.006)	
	ABW 23R5005M	<0.05 (<0.002)	
	23R5015M	<0.15 (<0.006)	



Recommended Cutting Conditions E47

[kyocera@kyocera-tools.ru](mailto:kyocera@kyocera-tools.ru)  
[www.kyocera-tools.ru](http://www.kyocera-tools.ru)

GRADES A  
 INSERTS B  
 CBN & PCD C  
 TOOLHOLDERS D  
 SMALL TOOLS E  
 BORING F  
 GROOVING G  
 CUT-OFF H  
 THREADING J  
 HSK TOOLING N  
 SPARE PARTS P  
 TECHNICAL R  
 INDEX T