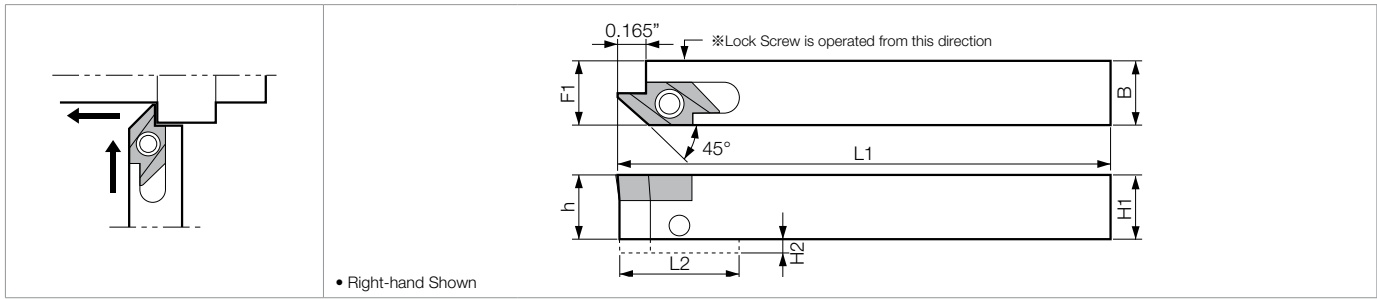
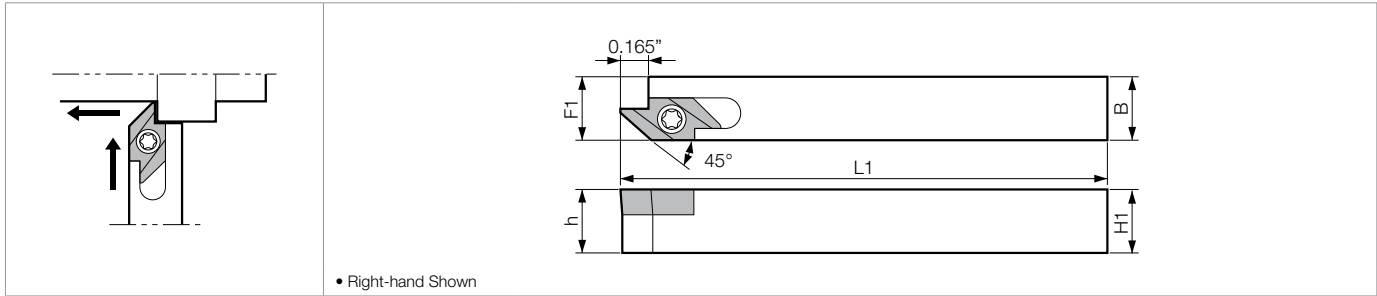


AABW Back Clamp (Edge Width: 0.185" • Depth 0.158" MAX)



SABW Screw Clamp (Edge Width: 0.185" • Depth 0.158" MAX)

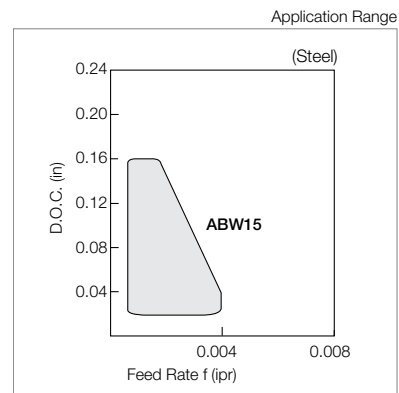


Toolholder Dimensions

Part Number	Stock	Unit	Dimensions							Standard Corner-R (rε)	Spare Parts			
			H1=h	H2	B	L1	L2	F1	Anchor Pin		Lock Screw	Clamp Screw	Wrench	
AABWR 6-15JXF	●	inch	0.375	-	0.375	4.750	-	0.383	0.006	LPA-11	HSB4X8R	-	FH-2	
8-15JXF	●		0.500	-	0.500	4.750	-	0.508	0.006	LPA-13				
10-15JXF	●		0.625	-	0.625	4.750	-	0.633	0.006	LPA-17				
AABWR 1010JX-40F	○	mm	10	-	10	120	-	10.2	0.15	LPA-11	HSB4X8R	-	FH-2	
1212JX-50F	○		12	-	12	120	-	12.2	0.15	LPA-13				
1616JX-50F	●		16	-	16	120	-	16.2	0.15	LPA-17				
SABWR 6-15JXF	●	inch	0.375	-	0.375	4.750	-	0.383	0.006	-	-	SB-3080TR	FT-10	
8-15JXF	●		0.500	-	0.500	4.750	-	0.508						
10-15JXF	●		0.625	-	0.625	4.750	-	0.633						
SABWR 1010JX-40F	○	mm	10	-	10	120	-	10.2	0.15	-	-	SB-3080TR	FT-10	
1212JX-40F	○		12	-	12	120	-	12.2						
1616JX-40F	○		16	-	16	120	-	16.2						
SABWR 2020K-40F	○		20	-	20	125	-	20.2	0.15	-	-	SB-3080TR	FT-10	

Applicable Inserts

Insert	Part Number	Corner-R re : mm (inch)	Reference Page
	ABW 15R4005	0.05 (0.002)	B86
	15R4015	0.15 (0.006)	
	ABW 15R4005M	<0.05 (<0.002)	
	15R4015M	<0.15 (<0.006)	



Recommended Cutting Conditions E47

kyocera@kyocera-tools.ru
www.kyocera-tools.ru