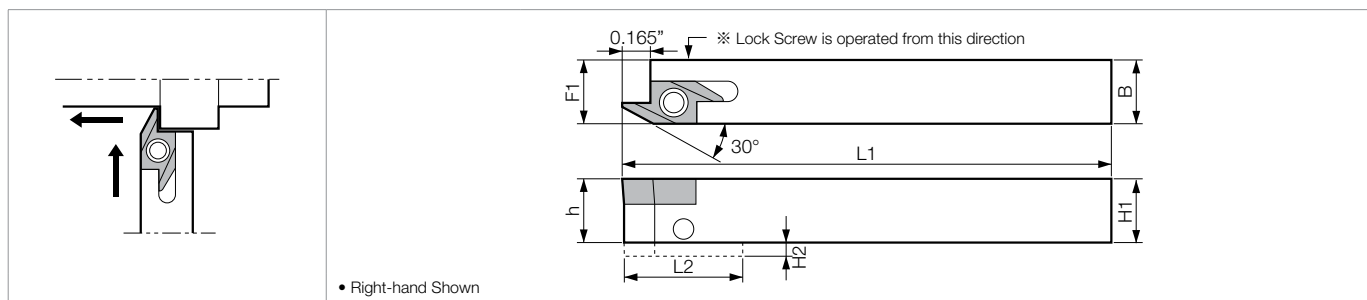
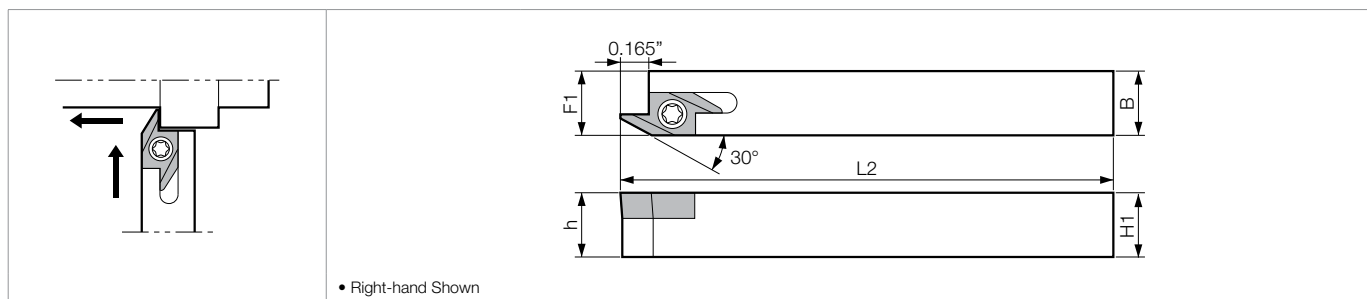


## AABS Back Clamp (Edge Width: 0.110" • Depth 0.158" MAX)



## SABS Screw Clamp (Edge Width: 0.110" • Depth 0.158" MAX)



### Toolholder Dimensions

Part Number	Stock	Unit	Dimensions						Standard Corner-R(℞)	Spare Parts			
			H1=h	H2	B	L1	L2	F1		Anchor Pin	Lock Screw	Clamp Screw	Wrench
AABSR 6-15JXF	●	inch	0.375	-	0.375	4.750	-	0.383	0.006		HSB4X8R	-	FH-2
AABSR 8-15JXF	●		0.500	-	0.500	4.750	-	0.508	0.006				
AABSR 10-15JXF	●		0.625	-	0.625	4.750	-	0.633	0.006				
AABSR 1010JX-40F	○	mm	10	-	10	120	-	10.2	0.15		HSB4X8R	-	FH-2
AABSR 1212JX-40F	○		12	-	12	120	-	12.2	0.15				
AABSR 1616JX-40F	○		16	-	16	120	-	16.2	0.15				
SABSR 6-15JXF	●	inch	0.375	-	0.375	4.750	-	0.383	0.006	-	-	SB-3080TR	FT-10
SABSR 8-15JXF	●		0.500	-	0.500	4.750	-	0.508					
SABSR 10-15JXF	●		0.625	-	0.625	4.750	-	0.633					
SABSR 1010JX-40F	○	mm	10	-	10	120	-	10.2	0.15	-	-	SB-3080TR	FT-10
SABSR 1212JX-40F	○		12	-	12	120	-	12.2					
SABSR 1616JX-40F	●		16	-	16	120	-	16.2					
SABSR 1212F-40F	○	mm	12	-	12	85	-	12.2	0.15	-	-	SB-3080TR	FT-10
SABSR 2020K-40F	○		20	-	20	125	-	20.2					

### Applicable Inserts

Insert	Part Number	Corner-R ℞ : mm (inch)	Reference Page
	ABS 15R4005	0.05 (0.002)	B86
	15R4015	0.15 (0.006)	
	ABS 15R4005M	<0.05 (<0.002)	
	15R4015M	<0.15 (<0.006)	

Recommended Cutting Conditions E47

