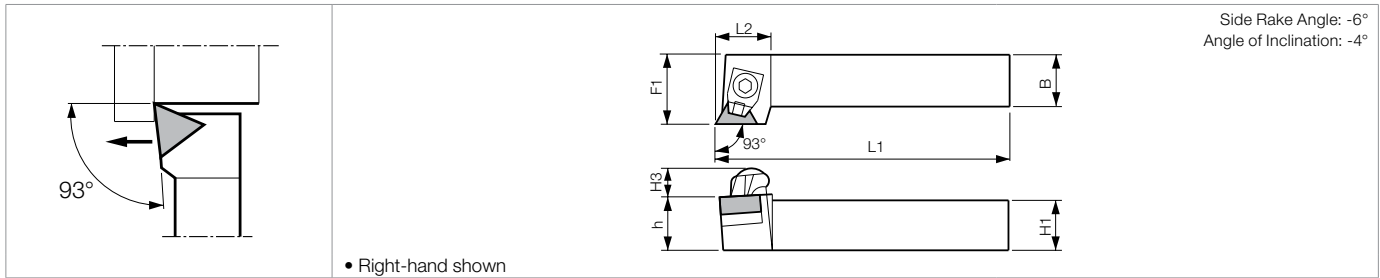
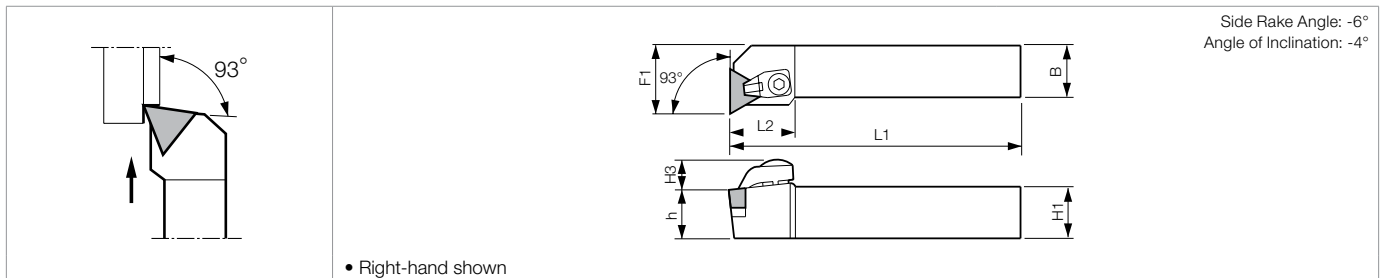


CTJN-A (External)



CTUN-A (Facing)



Toolholder Dimensions

Part Number	Stock		Unit	Dimensions						Standard Corner-R(°)	Spare Parts			
	R	L		H1=h	H3	B	L1	L2	F1		Clamp Set	Wrench	Shim	Shim Screw
CTJN% 2525M-11A	○	○	mm	25	11	25	150	22	32	0.8				
CTUN% 2525M-11A	○	○		25	11	25	150	27	32		CE-030A	LW-4	SP-219	HH3X12
2525M-11A	○	○		32	11	25	170	26	32	0.8	CE-030A	LW-4	SP-219	HH3X12

Applicable Inserts

Application	Hard Materials / Cast Iron	Cast Iron / Hard Materials
Ref. Page	C19	B95
Shape	CBN (KBN900)	Ceramic
Toolholder		
CTJN%...-11A	TNM22..	TNG22..
CTUN%...-11A	TNM22..	TNG22..

* TNM33 Insert toolholder is described in **D28**

Recommended Cutting Conditions **D41-D42**