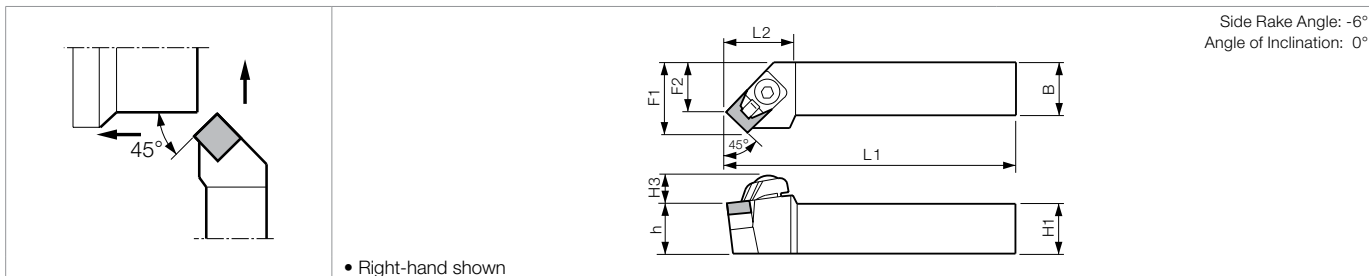
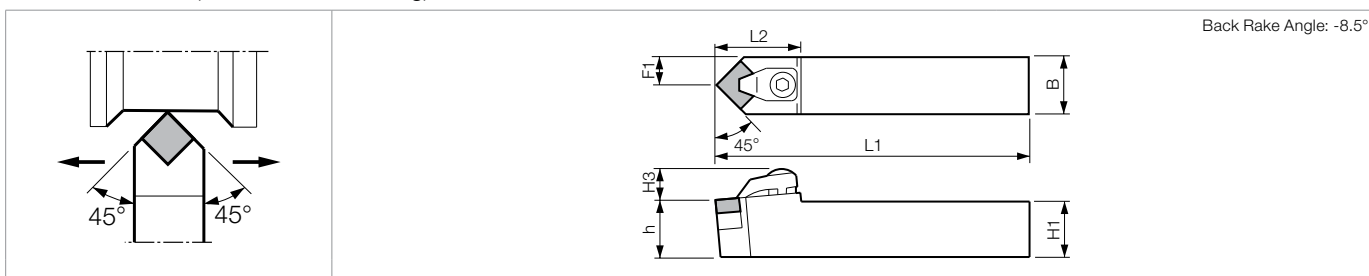


CSSN-A (External / Facing / Chamfering)



CSDN-A (External / Chamfering)



Toolholder Dimensions

Part Number	Stock			Unit	Dimensions							Standard Corner-R(r)	Spare Parts				
	R	N	L		H1=h	H3	B	L1	L2	F1	F2		Clamp Set	Wrench	Shim	Shim Screw	
CSSN% 2525M-09A	○		○	mm	25	11	25	150	26	32.0	25	0.8	CE-030A	LW-4	SP-129	-	HH3X12
2525M-12A	○		○		25	11	25	150	26	32.0	23				-	SP-148 (SP-143)	BH3X12
CSDNN 2525M-09A		○			25	13	25	150	32	12.5	-	0.8	CE-040	LW-4	SP-129	-	HH3X12
3225P-09A		○			32	13	25	170	32	12.5	-				-	SP-148 (SP-143)	BH3X12
2525M-12A		○			25	13	25	150	32	12.5	-						

• -12A toolholder Shim: When using SN□□43 Insert, purchase spare parts: SP-143 in () separately.

Applicable Inserts

Application	Hard Materials / Cast Iron	Cast Iron	Cast Iron / Hard Materials	When using as toolholder for ceramic tools, prepare spare parts below separately.			
Ref. Page	C19	B32	B93, B94	Chipbreaker	Clamp Set	Shim	Shim Screw
Toolholder Shape	CBN (KBN900)	Coated Carbide	Ceramic				
CSSN% ...-09A	SNM32..	-	-	-	-	-	-
CSSN% ...-12A	SNM42.. (SNM43..)	(SNM43..)	(SNG43..) (SNM43..) (SNG45..) (SNM45..)	CB-11	CE-020	SP-143 SP-141	M3X12 M3X8
CSDNN ...-09A	SNM32..	-	-	-	-	-	-
CSDNN ...-12A	SNM42.. (SNM43..)	(SNM43..)	(SNG43..) (SNM43..) (SNG45..) (SNM45..)	-	-	SP-143 SP-141	M3X12 M3X8

Recommended Cutting Conditions ➔ **D41-D42**

GRADES **A**
INSERTS **B**
CBN & POD **C**
TOOLHOLDERS **D**
SMALL TOOLS **E**
BORING **F**
GROOVING **G**
CUT-OFF **H**
THREADING **J**
HSK TOOLING **N**
SPARE PARTS **P**
TECHNICAL **R**
INDEX **T**