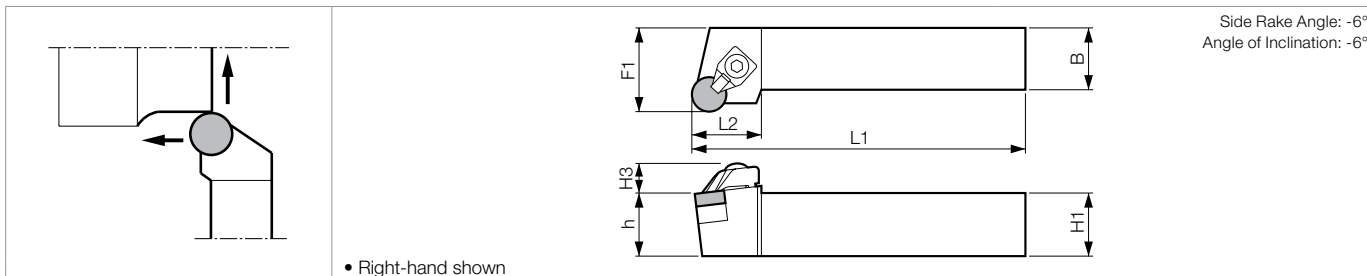
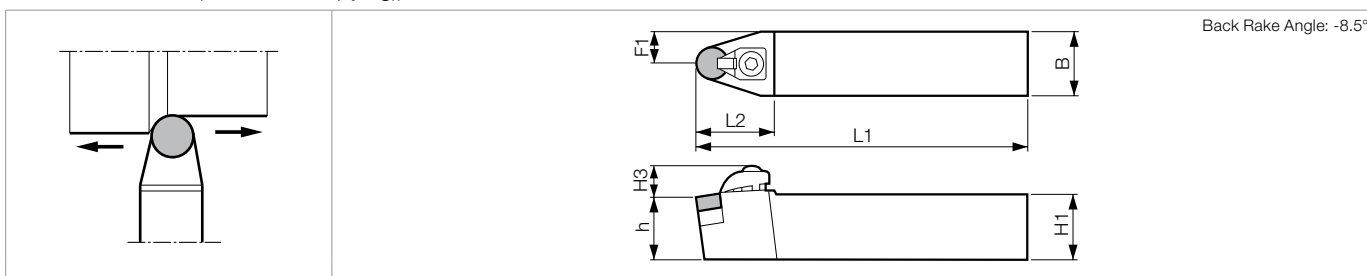


CRSN-A (External / Facing)



CRDN-A (External / Copying)



Toolholder Dimensions

Part Number	Stock			Unit	Dimensions						Standard Corner-R(rε)	Spare Parts				
	R	N	L		H1=h	H3	B	L1	L2	F1		Clamp Set	Wrench	Shim	Shim Screw	
CRSN% 2525M-09A	○		○	mm	25	11	25	150	26	32.0	-	CE-030A	LW-4	SP-829	-	HH3X12
3225P-09A	○		○		32	11	25	170	26	32.0	-	CE-030A	LW-4	-	-	HH3X12
2525M-12A	○		○		25	11	25	150	26	32.0	-	CE-030A	LW-4	-	SP-849 (SP-843)	BH3X12
3225P-12A	○		○		32	11	25	170	26	32.0	-	CE-030A	LW-4	-	SP-849 (SP-843)	BH3X12
CRDNN 2525M-09A		○			25	11	25	150	29	12.5	-	CE-030A	LW-4	SP-829	-	HH3X12
3225P-09A		○			32	11	25	170	29	12.5	-	CE-030A	LW-4	-	SP-849 (SP-843)	BH3X12
2525M-12A		○			25	11	25	150	28	12.5	-	CE-030A	LW-4	-	SP-849 (SP-843)	BH3X12
3225P-12A		○			32	11	25	170	28	12.5	-	CE-030A	LW-4	-	SP-849 (SP-843)	BH3X12

• -12A toolholder Shim: When using RN□□1204 Insert, purchase spare parts: SP-843 in () separately.

Applicable Inserts

Application	Hard Materials / Cast Iron	Cast Iron / Hard Materials	When using as toolholder for ceramic tools, prepare spare parts below separately.	
Ref. Page	C19	B92		
Shape	CBN (KBN900)	Ceramic	Shim	Shim Screw
Toolholder				
CRSN%...-09A	RNM32	(RNG33)	SP-826	-
CRSN%...-12A	RNM42 (RNM43)	(RNG43)	SP-843	M3X12
		(RNG45)	SP-841	M3X8
		(RNG33)	SP-826	-
CRDNN...-09A	RNM32	(RNG33)	SP-826	-
CRDNN...-12A	RNM42 (RNM43)	(RNG43)	SP-843	M3X12
		(RNG45)	SP-841	M3X8
		(RNG33)	SP-826	-

Recommended Cutting Conditions ➔ D41-D42

GRADES
A
INSERTS
B
CBN & POD
C
TOOLHOLDERS
D
SMALL TOOLS
E
BORING
F
GROOVING
G
CUT-OFF
H
THREADING
J
HSK TOOLING
N
SPARE PARTS
P
TECHNICAL
R
INDEX
T