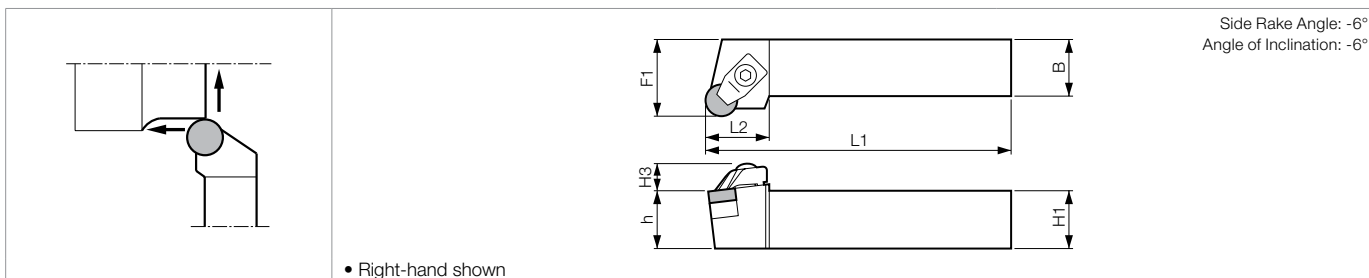
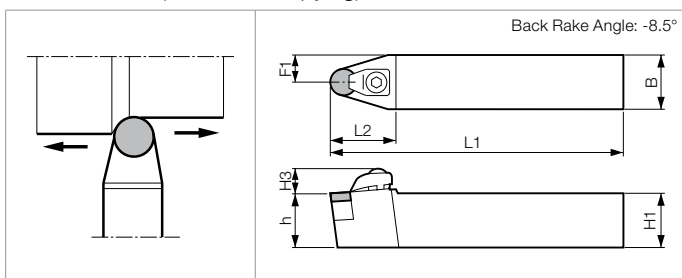


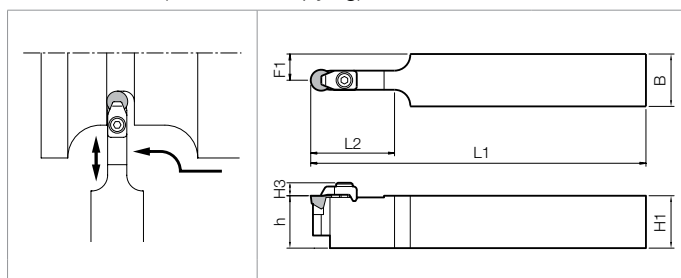
## CRSN / HRSN (External / Facing)



## CRDN (External / Copying)



## CRDC (External / Copying)



### Toolholder Dimensions

Part Number	Stock			Unit	Dimensions						Spare Parts					
	R	N	L		H1=h	H3	B	L1	L2	F1	Clamp Set	Wrench	Shim	Shim Screw	Lock Pin	Wrench
CRSN% 2020K-12 2525M-12 3225P-12	○		○	mm	20	11	20	125	26	25.0	CE-030	LW-4	SP-841 (SP-843)	M3X8 (M3X12)	-	-
	○		○		25	11	25	150	26	32.0						
	○		○		32	11	25	170	26	32.0						
CRDNN 16-4D 20-4E		●		inch	1.00	0.433	1.00	6.00	1.13	0.500	CE-030	LW-4	SP-841 (SP-843)	M3X8	-	-
		●			1.25	0.433	1.25	7.00	1.13	0.625						
CRDNN 2020K-12 2525M-12 3225P-12 3232P-15 4040R-15	○			mm	20	11	20	125	28	10.0	CE-030	LW-4	SP-841 (SP-843)	M3X8 (M3X12)	-	-
	○				25	11	25	150	28	12.5						
	○				32	11	25	170	28	12.5						
	○				32	13	32	170	35	16.0						
	○				40	13	40	200	35	20.0						
HRSN% 16-4D 20-4D	●			inch	1.00	0.580	1.00	6.00	1.03	1.250	HCL-001	LW-4	IRSN43 (IRSN45)	S-46	NL46L	LW-094
	●				1.25	0.580	1.25	6.00	1.03	1.500						
CRDCN 16-2 16-3 20-3 20-4 20-6		●		inch	1.00	0.20	1.00	8.00	1.00	0.500	HCL-017C	LW-2	HSH665A	-	-	-
		●			1.00	-	1.00	-	-	0.500						
		●			1.25	0.27	1.25	8.00	1.50	0.625	HCL-007	LW-4	HSH657			
		●			1.25	0.41	1.25	8.00	2.00	0.625						
		●			1.25	0.41	1.25	8.00	2.00	0.625						
		●														

• Shim & Shim Screw : When using RN□43 Insert, purchase spare parts in ( ) separately.

### Applicable Inserts

Application	Cast Iron / Hard Materials	Hard Materials / Cast Iron	When using as toolholder for CBN tools (KBN900), prepare spare parts below separately.			Application	Cast Iron / Hard Materials
Ref. Page	● B92	● C19	Clamp Set	Shim	Shim Screw	Ref. Page	● B98
Shape	Ceramic	CBN (KBN900)				Shape	Ceramic
Toolholder						Toolholder	
CRSN%...-12	RNG45.. (RNG43..)	(RNM43..)	CE-030A	SP-843	M3X12	CRDCN...-2	RCGX 24.., 102..
CRDNN...-4D/4E CRDNN...-12	RNG45.. (RNG43..)	(RNM43..)	CE-030A	SP-843	M3X12	CRDCN...-3	RCGX 35.., 103..
CRDNN...-15	RNG55..	-	-	-	-	CRDCN...-4	RCGX 45.., 104..
HRSN%...-4D	RNG45.. (RNG43..)	(RNM43..)	HCL-001	IRSN45	S-46	CRDCN...-6	RCGX 106..

Recommended Cutting Conditions ➔ D41-D42