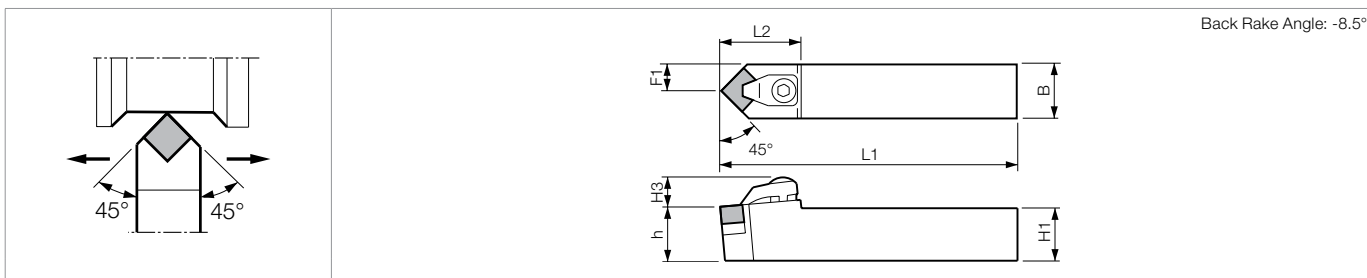


TOOLHOLDERS FOR CERAMIC INSERTS [SN]

Top Clamp

CSDN / HSDN (External / Chamfering)



Toolholder Dimensions

Part Number	Stock			Unit	Dimensions								Standard Corner R(rε)	Spare Parts						
	R	N	L		H1=h	H3	B	L1	L2	F1	F2	Chipbreaker		Clamp Set		Wrench	Shim	Shim Screw	Lock Pin	Wrench
CSRN% 20-4E	●	●		inch	1.25	0.433	1.25	7.00	0.88	1.50	-	1/32	CB-11	CE-020		LW-4	SP-141	M3X8	-	-
CSRN% 2020K-12	○	○		mm	20	12	20	125	22	22.0	2	0.8	CB-11	CE-020		LW-4	SP-141 (SP-143)	M3X8 (M3X12)	-	-
2525M-12	○	○	25		12	25	150	22	27.0	-										
3225P-12	○	○	32		12	25	170	22	27.0	-										
3225P-15	○	○	32		15	25	170	30	32.4	-										
4040R-15	○	○	40		15	40	200	30	43.0	-										
CS-N% 2525M-12	○	○		mm	25	12	25	150	20	32.0	-	0.8	CB-11	CE-020		LW-4	SP-141 (SP-143)	M3X8 (M3X12)	-	-
CSKN% 2020K-12	○	○		mm	20	12	20	125	27	25.0	18	0.8	CB-11	CE-020		LW-4	SP-141 (SP-143)	M3X8 (M3X12)	-	-
2525M-12	○	○	25		12	25	150	27	32.0	18										
3225P-15	○	○	32		15	25	170	37	32.0	20										
CSYN% 2020K-12	○	○		mm	20	12	20	125	27	25.0	21	0.8	CB-11	CE-020		LW-4	SP-141 (SP-143)	M3X8 (M3X12)	-	-
2525M-12	○	○	25		12	25	150	27	32.0	21										
CSSN% 16-4D	●	●		inch	1.00	0.433	1.00	6.00	1.00	1.25	0.90	1/32	CB-11	CE-020		LW-4	SP-141 (SP-143)	M3X8 (M3X12)	-	-
CSSN% 2020K-12	○	○		mm	20	12	20	125	26	25.0	16	0.8	CB-11	CE-020		LW-4	SP-141 (SP-143)	M3X8 (M3X12)	-	-
2525M-12	○	○	25		12	25	150	26	32.0	23										
CSDNN 2020K-12		○		mm	20	13	20	125	32	10.0	-	0.8	-	CE-040		LW-4	SP-141 (SP-143)	M3X8 (M3X12)	-	-
2525M-12		○	25		13	25	150	32	12.5	-										
3225P-12		○	32		13	25	170	32	12.5	-										
HSRN% 16-4D	●	●		inch	1.00	0.433	1.00	6.00	0.87	1.13	-	1/32	HCB300	HCL-000 (HCL-001)		LW-4	ISSN433 (ISSN453)	S-46	NL46L	LW-094
HSDNN 16-4D		●		inch	1.00	0.45	1.00	6.00	1.30	0.500	-	1/32	-	HCL-002		LW-4	ISSN433 (ISSN453)	S-46	NL46L	LW-094
20-4D		●	1.25		0.45	1.25	6.00	1.30	0.625	-										

● Shim & Shim Screw : When using SN□43 Insert, purchase spare parts in () separately.

Applicable Inserts

Application	Cast Iron / Hard Materials	Cast Iron / Hard Materials	Cast Iron	Hard Materials / Cast Iron	When using as toolholder for CBN tools (KBN900), prepare spare parts below separately.			
	Ref. Page	● B93, B94	● B93		● B32	● C19	Clamp Set	Shim
Toolholder	Shape							
CSRN% ...-4E	SNG45.. (SNG43..)	-	(SNM43..)	(SNM43..)	CE-030A	SP-143	M3X12	
CSRN% ...-12	SNM45..	-	-	-	-	-	-	
CSRN% ...-15	SNG55..	-	-	-	-	-	-	
CS-N% ...-12	SNG45.. (SNG43..)	-	(SNM43..)	(SNM43..)	CE-030A	SP-143	M3X12	
CSKN% ...-12	SNG45.. (SNG43..)	-	(SNM43..)	(SNM43..)	CE-030A	SP-143	M3X12	
CSKN% ...-15	SNG55..	-	-	-	-	-	-	
CSYN% ...-12	SNG45.. (SNG43..)	-	(SNM43..)	(SNM43..)	CE-030A	SP-143	M3X12	
CSSN% ...-4D	SNG45.. (SNG43..)	-	(SNM43..)	(SNM43..)	CE-030A	SP-143	M3X12	
CSSN% ...-12	SNM45..	-	-	-	-	-	-	
CSDNN...-12	SNG45.. (SNG43..)	-	(SNM43..)	(SNM43..)	*	SP-143	M3X12	
HSRN% ...-4D	SNG45.. (SNG43..)	(SNGA43..)	(SNM43..)	(SNM43..)	HCL-001	ISSN453	S-46	
HSDNN...-4D	SNG45.. (SNG43..)	(SNGA43..)	(SNM43..)	(SNM43..)	*	ISSN453	S-46	

● Shim & Shim Screw : When using SN□43 Insert, purchase spare parts in () separately.

*CSDNN...-12: Clamp Set CE-040 is used continuously.

kyocera@kyocera-tools.ru
www.kyocera-tools.ru

Recommended Cutting Conditions ● D41-D42

● : U.S. Stock Standard
○ : World Express (Shipping: 7-10 Business Days)