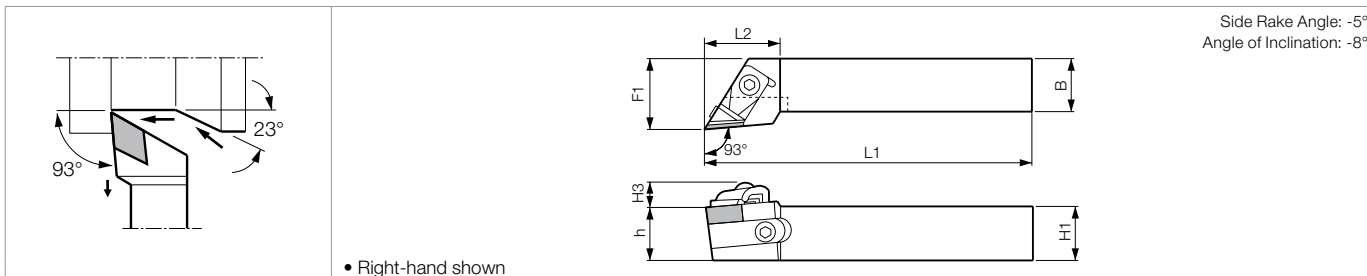


CDJN (External / Copying / Back Turning)



Toolholder Dimensions

Part Number	Stock		Unit	Dimensions						Standard Corner-R(°)	Spare Parts						
	R	L		H1=h	H3	B	L1	L2	F1		Chipbreaker	Clamp Set	Wrench	Shim	Shim Screw	Lock Pin	Wrench
CDJN% 2525M-15	○	○	mm	25	16	25	150	32	32	0.8							
3225P-15	○	○		32	16	25	170	32	32		CB-14/15	CE-010	LW-4	556C%	HH5X16	-	-

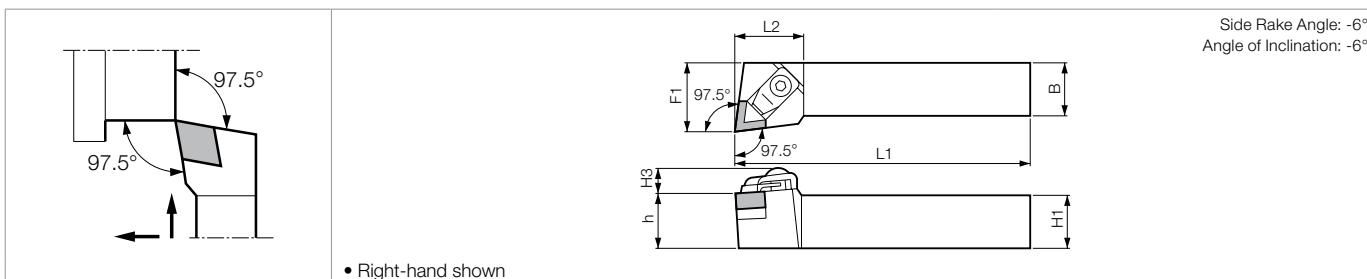
- Shim & Shim Screw : When using DN□□43 Insert, purchase spare parts in () separately.
- Chipbreaker: CB-14 for Right-hand Toolholder, and CB-15 for Left-hand Toolholder.
- Shim: 556CR for Right-hand Toolholder, and 556CL for Left-hand Toolholder.

Applicable Inserts

Application	Cast Iron / Hard Materials
Ref. Page	B91
Shape	Ceramic
Toolholder	
CDJN%...-15	DNG45..

Recommended Cutting Conditions [D41-D42](#)

CELN (External / Facing)



Toolholder Dimensions

Part Number	Stock		Unit	Dimensions						Standard Corner-R(°)	Spare Parts				
	R	L		H1=h	H3	B	L1	L2	F1		Chipbreaker	Clamp Set	Wrench	Shim	Shim Screw
CELN% 2525M-13	○	○	mm	25	15	25	150	32	32	0.8					

Applicable Inserts

Application	Cast Iron / Hard Materials
Ref. Page	B91
Shape	Ceramic
Toolholder	
CELN%...-13	ENG45..

Recommended Cutting Conditions [D41-D42](#)

GRADES	A
INSERTS	B
CBN & PCBN	C
TOOLHOLDERS	D
SMALL TOOLS	E
BORING	F
GROOVING	G
CUT-OFF	H
THREADING	J
HSK TOOLING	N
SPARE PARTS	P
TECHNICAL	R
INDEX	T