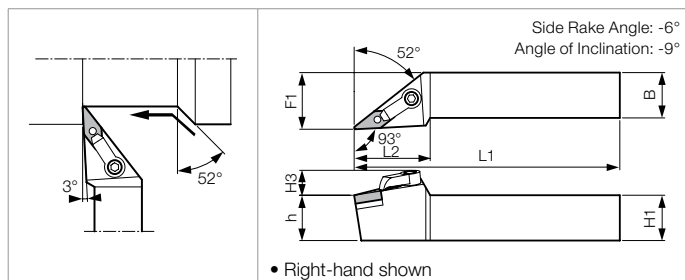
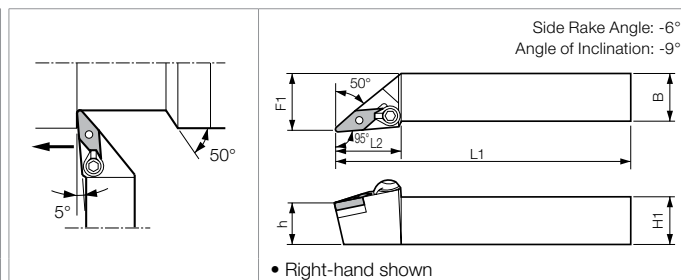


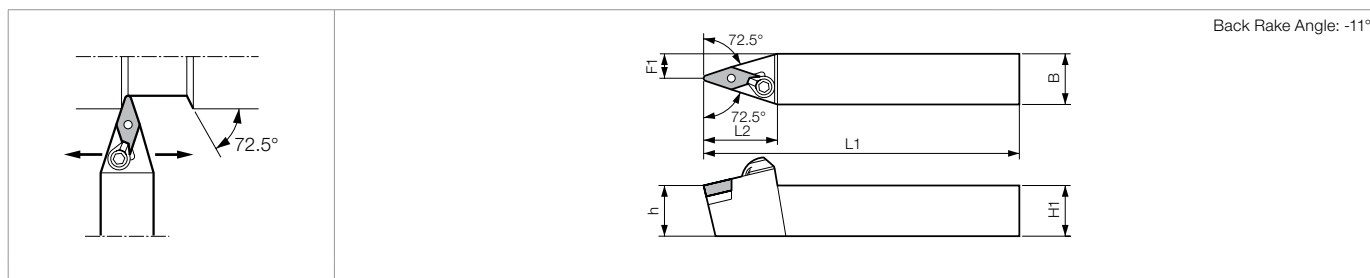
MVJN (External / Copying)



MVLN (External / Copying)



MVVN (External / Copying)



Toolholder Dimensions

Part Number	Stock			Unit	Dimensions							Standard Corner-R(r)	Spare Parts							
	R	N	L		H1=h	H3	B	L1	L2	F1	F2		Clamp Set	Wrench	Shim	Shim Screw	Lock Pin	Wrench	Clamp	Clamp Screw
MVJN% 12-3B	●	●	●	inch	0.75	0.59	0.75	4.5	1.69	1.00	-	1/64	-	(5/64 hex)	IVSN322	S-34	NL34L	LX-156	CL-30	XNS48
16-3C	●	●	●	inch	1.00	0.60	1.00	5.0	1.69	1.25	-									
MVLN% 2020K-16	○	○	○	mm	20	20	125	38	25.0	-	0.8	CPS-5%	FH-2.5	MVN-32	-	TS-3S	FH-2	-	-	
2525M-16	○	○	○	mm	25	25	150	38	32.0	-										
MVVNN 12-3B		●	●	inch	0.75	0.75	4.50	1.67	0.375	-	1/32	CPS-5R	(5/64 Hex)	IVNS322	-	NL34L	LW-156	CL-12	XNS48	
16-3D		●	●	inch	1.00	1.00	6.00	1.67	1.670	0.50										
MVVNN 2020K-16		○	○	mm	20	20	125	39	10.0	-	0.8	CPS-5R	FH-2.5	MVN-32	-	TS-3S	FH-2	-	-	
2525M-16		○	○	mm	25	25	150	39	12.5	-										

• Clamp Set: CPS-5R for Right-hand Toolholder, CPS-5L for Left-hand Toolholder.

Applicable Inserts

Toolholder	Insert
MVJN%...12-3B	VN□A VN□G VN□M
MVJN%...16-3C	
MVLN%...-16	
MVVNN...12-3B	
MVVNN...16-3D	
MVVNN...-16	

Application	Finishing	Finishing-Medium	Finishing-Medium	Medium	Roughing	Finishing-Medium	Stainless Steel / Finishing
Ref. Page	● B41	● B41	● B41	● B41	● B41	● B42	● B42
Insert	PP	VF	PQ	TN-V	Standard	%	MQ
Size	33..	33..	33..	33..	33..	33..	33..
Application	Stainless Steel / Medium-Roughing	Stainless Steel / Medium-Roughing	Cast Iron	Cast Iron	Non-ferrous Metals	Hard Materials	
Ref. Page	● B42	● B42	● B42	● B96	● C23	● C12	
Insert	MS	MU	Without Chipbreaker	Ceramic	PCD	CBN	
Size	33..	33..	33..	33..	33..	33..	

Rotation Directions of the Clamp Set

Recommended Cutting Conditions ● D41-D42



MVVNN type
(Neutral)



MVLNR type
(Right-hand Toolholder)



MVLNL type
(Left-hand Toolholder)

Clamp set: (CPS-5R) has Right-hand thread.
When clamping the insert, turn the screw in the arrow direction (clockwise).
When removing the insert, turn the screw away from the arrow (counterclockwise).

Clamp set: (CPS-5L) has Left-hand thread.
When clamping the insert, turn the screw in the arrow direction (counterclockwise).
When removing the insert, turn the screw away from the arrow (clockwise).