

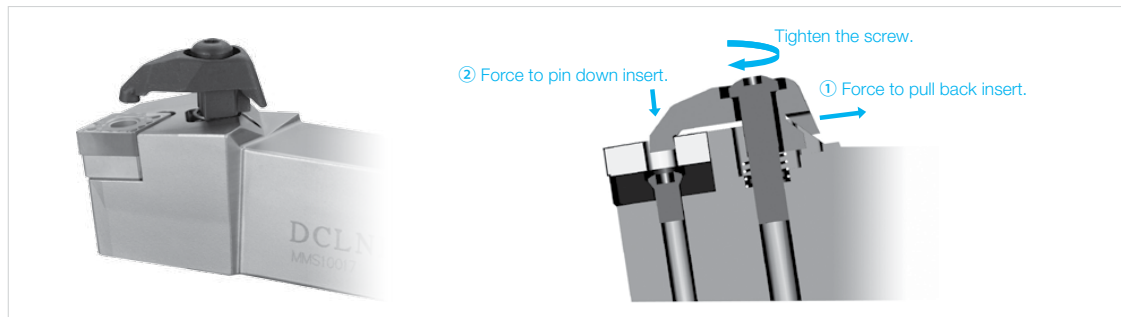
# DOUBLE CLAMP SERIES

High Rigidity Toolholder

# Double-Clamp Series

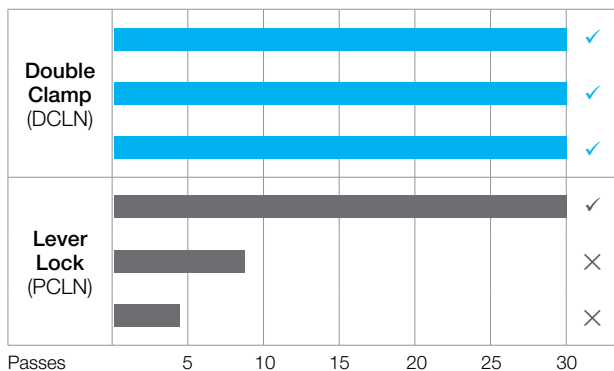
*Securely Clamps the Insert with a Single Action*

## Improved Clamping Rigidity



## Long Insert Life

The double-clamp design firmly clamps the insert in two directions, which maintains good contact between the shim and the insert even during high feed rate machining. Along with improving the accuracy of the insert position, greater insert life is attained.



<Cutting Conditions>  
 SCM435, Vc (sfm)=490, D.O.C.=0.039", f (ipr)=0.016"  
 CNMG432PS, 30 Pass Interrupted Machining

## Comparison of shim and insert contact

Coating material is applied to the shim side of the insert, which is installed on the toolholder. Compare the shim contact surface after tightening.

	PS Chipbreaker	Shim Contact Surface of Double-Clamp	Shim Contact Surface of Lever Lock
Cutting Edge Side			
		The shape of the insert breaker is transferred indicating a high level of contact.	Only a part of the shape of the insert breaker is transferred indicating a low level of contact.

## Convenient Marking Design



The spare part descriptions and the screw tightening torque are conveniently located on the toolholder body.

Screw	Tightening Torque
CS-2D	1.7 N·m (1.25lb.ft)
CS-3D	3.9 N·m (2.88lb.ft)
CS-5D	3.0 N·m (2.21lb.ft)