

# Holeshot Drill DR

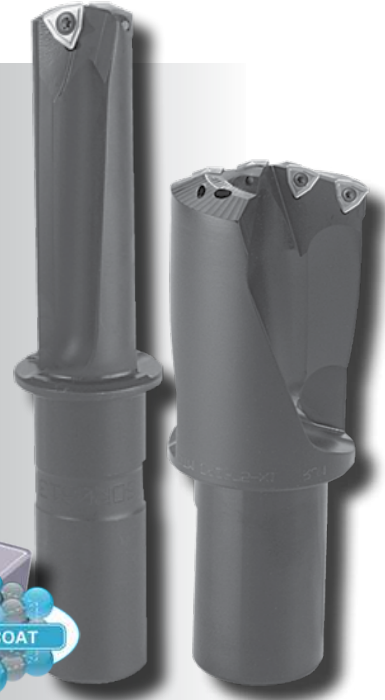
# Holeshot Drills



Magic Drill DR

Drilling

- Drilling diameters from 0.688" to 4.000"
- Flute designs optimized for maximum rigidity and good chip evacuation
- WCMX inserts available in new MEGACOAT Grade PR1230



## Patented Swept Back Design



- Enables drilling of stacked plates and welded assemblies
- Reduces slug formation
- Provides excellent chip control

### ● Holeshot Drill (DR) Inserts

Insert	Description	Dimension (inch)				Angle (°)	Insert Grade							Ref. Page for Toolholder			
		A	T	Ød	rε		α	Cermet	PVD Cermet	MEGACOAT					PVD Coated Carbide		Carbide
								TN60	PV90	PR1230	PR660	PR830	PR905		PR915	KW10	
	WCMX 040204-M1A	1/4	0.094	0.110	1/64	7°		●	●		●	●	●	●	●		Page 54-59
	050308-M1	5/16	1/8	0.125	1/32		●	●	●		●	●	●	●	●		
	050308-M1A	5/16	1/8	0.125	1/32		●	●	●		●	●	●	●	●		
	06T308-M1	3/8	5/32	0.146	1/32		●	●	●		●	●	●	●	●		
	06T308-M1A	3/8	5/32	0.146	1/32		●	●	●		●	●	●	●	●		

Insert Grade Features Page 2

● : Stock Standard  
○ : World Express

● WCMX...M1 : General purpose drilling insert; First choice for Med-High Carbon Steel, Tool Steels, and Cast Iron; also available for General purpose drilling in Stainless Steel. Tougher edge than M1A chipbreaker.

● WCMX...M1A: First choice for Low-carbon Steel, Aluminum, and other "sticky" materials. Freer cutting than M1 chipbreaker.