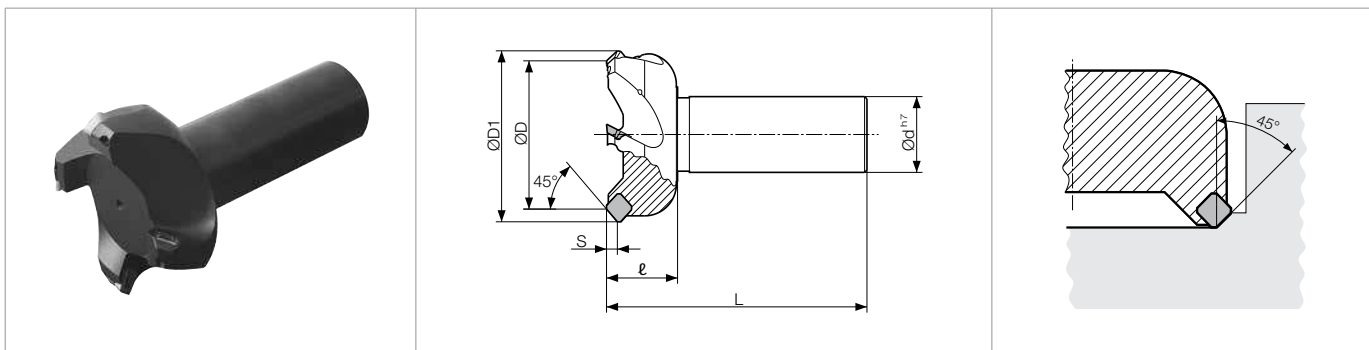


MSO45-S-09 with Cylindrical Shank (High Rake)



Toolholder Dimensions

Part Number	Stock	No. of Inserts	Dimensions (mm)						Rake Angle (°)		Spare Parts	
			ØD	ØD1	Ød	L	ℓ	S	A.R.	R.R.	Clamp Screw	Wrench
MSO 4550-S32-09	○	3	50	60	32	110	30	4.2	+27°	-8°	SB-3060TR	DT-10
4563-S32-09	○	4	63	73	32	110	30	4.2				
4580-S32-09	○	4	80	90	32	110	30	4.2				

Applicable Inserts

Part Number	Applicable Inserts B22	
	MSO 45...-09	SOMT 0903AXEN-J

MSO45 / MS045...-09 Recommended Cutting Conditions

Workpiece Material	Feed Rate fz (ipt)	Recommended Insert Grades (Cutting Speed Vc: sfm)				
		Cermet	MEGACOAT		Carbide	PCD
		TN100M	PR1225	PR1210	KW10	KPD230
Carbon Steel	~0.0118	★ 390 ~ 660	★ 390 ~ 820	-	-	-
Alloy Steel	~0.0118	★ 330 ~ 590	★ 330 ~ 720	-	-	-
Mold Steel	~0.0098	★ 330 ~ 590	★ 260 ~ 590	-	-	-
Stainless Steel	~0.0098	☆ 390 ~ 660	★ 390 ~ 720	-	-	-
Cast Iron	~0.0118	-	-	★ 330 ~ 720	☆ 260 ~ 490	-
Non-ferrous Metals	~0.0079	-	-	-	★ 330 ~ 980	★ 980 ~ 2620

★: 1st Recommendation ☆: 2nd Recommendation

GRADES A
LINEUP / INSERTS B
45° / 70° LEAD C
75° LEAD D
90° LEAD E
HIGH FEED F
MULTI-FUNCTION G
SLOT MILLS H
RADIUS / BALL-NOSE J
OTHER APPLICATIONS K
TOOL HOLDING O
SPARE PARTS P
TECHNICAL R
INDEX T