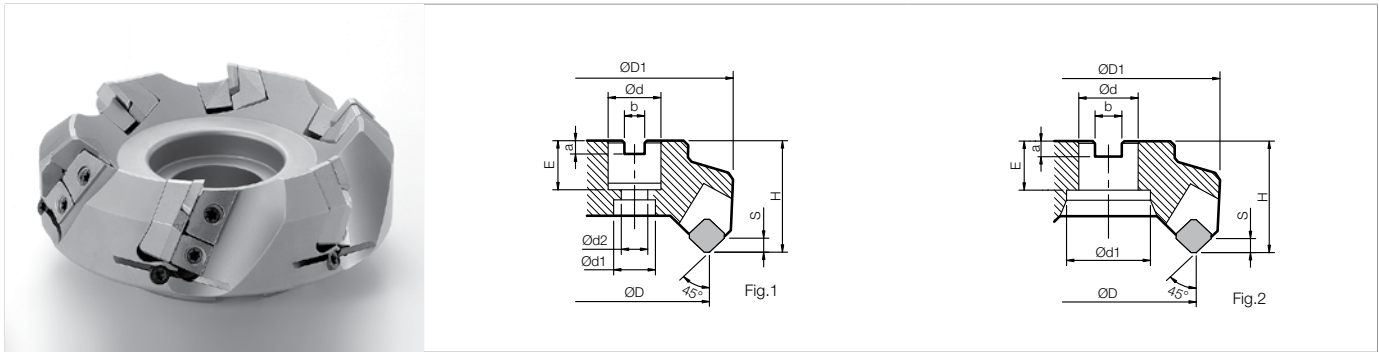


MSE45-SF Face Mill (Easy Edge Adjustment)

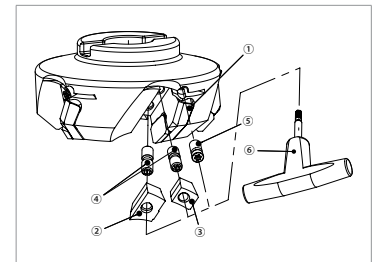


Toolholder Dimensions

| Part Number | Stock | No. of Inserts | Dimensions (mm) | | | | | | | | | | | Rake Angle (°) | | Drawing | Weight (kg) |
|------------------|--------------------|----------------|-----------------|-----|-----|--------|-----|----|----|--------|--------|--------|------|----------------|-------|---------|-------------|
| | | | ØD | ØD1 | Ød | Ød1 | Ød2 | H | E | a | b | s | A.R. | R.R. | | | |
| Inch Bore Dia. | MSE 45080R-5T-SF | ○ | 5 | 80 | 101 | 1.000" | 38 | - | 50 | 1.024" | 0.236" | 0.375" | 6 | +20° | -8.5° | Fig.2 | 1.5 |
| | 45100R-6T-SF | ○ | 6 | 100 | 119 | 1.250" | 45 | - | 50 | 1.260" | 0.315" | 0.500" | 6 | +20° | -7.5° | Fig.2 | 2.2 |
| | 45125R-7T-SF | ○ | 7 | 125 | 143 | 1.500" | 55 | - | 63 | 1.496" | 0.394" | 0.625" | 6 | +20° | -6.5° | Fig.2 | 4.0 |
| Metric Bore Dia. | MSE 45063R-4T-M-SF | ○ | 4 | 63 | 85 | 22 | 17 | 11 | 50 | 21 | 6.3 | 10.4 | 6 | +20° | -10° | Fig.1 | 1.2 |
| | 45080R-5T-M-SF | ○ | 5 | 80 | 101 | 27 | 40 | 13 | 50 | 24 | 7.0 | 12.4 | 6 | +20° | -8.5° | Fig.1 | 1.5 |
| | 45100R-6T-M-SF | ○ | 6 | 100 | 119 | 32 | 45 | - | 50 | 32 | 8.0 | 14.4 | 6 | +20° | -7.5° | Fig.2 | 2.2 |
| | 45125R-7T-M-SF | ○ | 7 | 125 | 143 | 40 | 55 | - | 63 | 30 | 9.0 | 16.4 | 6 | +20° | -6.5° | Fig.2 | 4.0 |

Spare Parts

| Part Number | Spare Parts | | | | | |
|-------------------|-------------|-------------------|----------------------|---------------|--------------------|----------|
| | ① Cartridge | ② Clamp | ③ Clamp | ④ Clamp Screw | ⑤ Adjustment Screw | ⑥ Wrench |
| MSE 4500R-0T-SF | | | | | | |
| MSE 4500R-0T-M-SF | LSE-445SR | C43R (for Insert) | C44R (for Cartridge) | W6X17 | SV-60136TR | TTC-20 |



- Arbor Bolt (HH10X30S) is included for MSE45063R-4T-M-SF.
- Arbor Bolt (HH12X35M) is included for MSE45080R-5T-M-SF.

Applicable Inserts

| Part Number | Applicable Inserts B10 | | | | Applicable PCD Inserts B26 | |
|--|------------------------|---------------|--------------------------------------|---------------------------|----------------------------|---------------|
| | | | | | | |
| MSE45...-SF | SEMR 42AFER-H | SEKR 42AFEN-S | SEEN 42AFTN SEKN 42AFTN 42AFFN | SEEN 42AFTR-W 42AFFR-W | SEEN 42AFFN | SEEN 42AFFR-W |
| MSE4500-00 MSE45000R-0T MSE45000R-0T-M | | | | | | |

Recommended Cutting Conditions

| Workpiece Material | Feed Rate fz (ipt) | Recommended Insert Grades (Cutting Speed Vc: sfm) | | | | | |
|--------------------|--------------------|---|-------------|-------------|-------------|-------------|-----------------|
| | | Cermet | MEGACOAT | | PVD | Carbide | PCD |
| | | TN100M | PR1225 | PR1210 | PR830 | KW10 | KPD001 (KPD010) |
| Carbon Steel | ~0.0118 | ★ 390 ~ 660 | ★ 390 ~ 820 | - | ☆ 390 ~ 660 | - | - |
| Alloy Steel | ~0.0118 | ★ 330 ~ 590 | ★ 330 ~ 720 | - | ☆ 330 ~ 590 | - | - |
| Mold Steel | ~0.0098 | ★ 330 ~ 590 | ★ 260 ~ 590 | - | ☆ 260 ~ 490 | - | - |
| Stainless Steel | ~0.0098 | ☆ 390 ~ 660 | ★ 390 ~ 720 | - | ☆ 390 ~ 660 | - | - |
| Cast Iron | ~0.0118 | - | - | ★ 330 ~ 720 | - | ☆ 260 ~ 490 | - |
| Non-ferrous Metals | ~0.0079 | - | - | - | - | ★ 330-980 | ★ 980-2620 |

★: 1st Recommendation ☆: 2nd Recommendation

GRADES A
LINEUP / INSERTS B
45° / 0° LEAD C
75° LEAD D
90° LEAD E
HIGH FEED F
MULTI-FUNCTION G
SLOT MILLS H
RADIUS / BALL-NOSE J
OTHER APPLICATIONS K
TOOL HOLDING O
SPARE PARTS P
TECHNICAL R
INDEX T