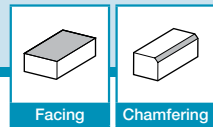


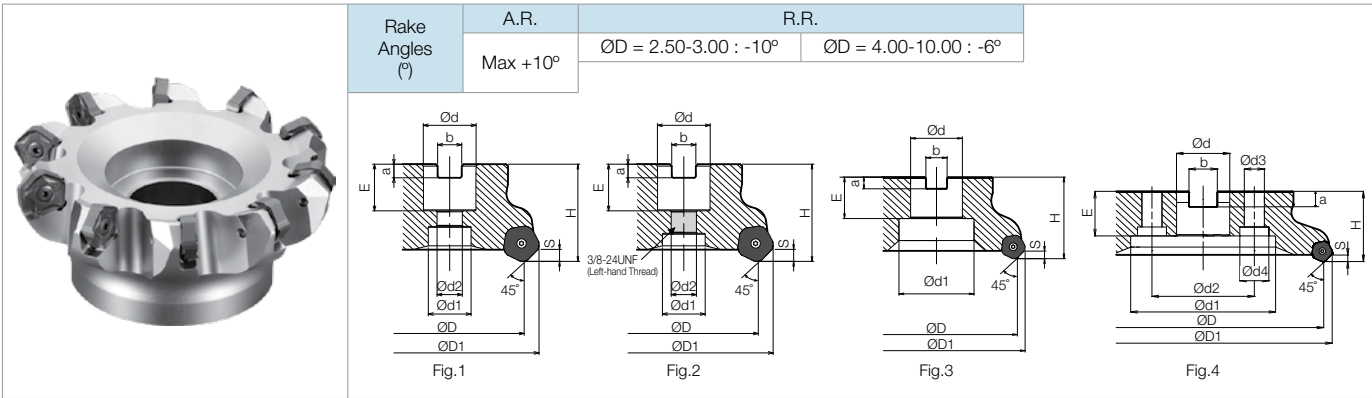
# MFPN45



Facing

Chamfering

## MFPN45 Face Mill (Inch Size)



### Toolholder Dimensions

Part Number	Stock	No. of Inserts	Dimensions (in)												Drawing	Weight (kg)	Shim	
			ØD	ØD1	Ød	Ød1	Ød2	H	E	a	b	Ød3	Ød4					
Inch Bore Dia.	Coarse Pitch	MFPN 452500R-4T	●	4	2.500	3.012	0.750	0.669	0.433	1.575	0.750	0.187	0.313	-	-	Fig.1	0.5	Yes
		MFPN 453000R-5T	●	5	3.000	3.512	1.000	0.866	0.551	1.969	1.063	0.236	0.375	-	-	Fig.1	1.1	
		MFPN 454000R-6T	●	6	4.000	4.512	1.500	2.047	-	1.969	1.142	0.394	0.625	-	-	Fig.3	1.4	
		MFPN 455000R-7T	●	7	5.000	5.512	1.500	2.283	-	2.480	1.417	0.394	0.625	-	-	Fig.3	2.6	
		MFPN 456000R-8T	●	8	6.000	6.512	2.000	2.835	-	2.480	1.496	0.433	0.750	-	-	Fig.3	3.8	
		MFPN 458000R-10T	●	10	8.000	8.512	2.500	3.937	4.000	2.480	1.575	0.551	1.000	0.709	1.024	Fig.4	6.6	
	MFPN 4510000R-12T	●	12	10.000	10.512	2.500	3.937	4.000	2.480	1.575	0.551	1.000	0.709	1.024	Fig.4	9.3		
	Fine Pitch	NEW MFPN 452000R-4T	●	4	2.000	2.31	0.750	-	3/8-24UNF	1.969	0.83	0.187	0.313	-	-	Fig.2	0.3	No
		MFPN 452500R-5T	●	5	2.500	3.012	0.750	0.669	0.433	1.575	0.750	0.187	0.313	-	-	Fig.1	0.5	
		MFPN 453000R-6T	●	6	3.000	3.512	1.000	0.866	0.551	1.969	1.063	0.236	0.375	-	-	Fig.1	1.1	
		MFPN 454000R-8T	●	8	4.000	4.512	1.500	2.047	-	1.969	1.142	0.394	0.625	-	-	Fig.3	1.3	
		MFPN 455000R-10T	●	10	5.000	5.512	1.500	2.283	-	2.480	1.417	0.394	0.625	-	-	Fig.3	2.6	
MFPN 456000R-12T		●	12	6.000	6.512	2.000	2.835	-	2.480	1.496	0.433	0.750	-	-	Fig.3	3.9		
Extra Fine Pitch	MFPN 458000R-14T	●	14	8.000	8.512	2.500	3.937	4.000	2.480	1.575	0.551	1.000	0.709	1.024	Fig.4	6.6		
	MFPN 4510000R-16T	●	16	10.000	10.512	2.500	3.937	4.000	2.480	1.575	0.551	1.000	0.709	1.024	Fig.4	9.3		
	MFPN 452500R-6T	●	6	2.500	3.012	0.750	0.669	0.433	1.575	0.750	0.187	0.313	-	-	Fig.1	0.5		
	MFPN 453000R-8T	●	8	3.000	3.512	1.000	0.866	0.551	1.969	1.063	0.236	0.375	-	-	Fig.1	1.1		
	MFPN 454000R-10T	●	10	4.000	4.512	1.500	2.047	-	1.969	1.142	0.394	0.625	-	-	Fig.3	1.3		
	MFPN 455000R-13T	●	13	5.000	5.512	1.500	2.283	-	2.480	1.417	0.394	0.625	-	-	Fig.3	2.6		
	MFPN 456000R-16T	●	16	6.000	6.512	2.000	2.835	-	2.480	1.496	0.433	0.750	-	-	Fig.3	3.9		
	MFPN 458000R-18T	●	18	8.000	8.512	2.500	3.937	4.000	2.480	1.575	0.551	1.000	0.709	1.024	Fig.4	6.6		
MFPN 4510000R-20T	●	20	10.000	10.512	2.500	3.937	4.000	2.480	1.575	0.551	1.000	0.709	1.024	Fig.4	9.3			

\*Dimension S is 0.236" for GM/SM/GH chipbreaker and 0.197" for GL chipbreaker

### Spare Parts (Inch / Inch Bore)

Part Number	Clamp Screw	Wrench		Shim	Shim Screw	Wrench	Anti-seize Compound	Arbor Bolt	Mounting Screw	
		TT	DTM							
Coarse Pitch	MFPN 452500R-4T	SB-50140TR	TT-15	-	MFPN-45	SPW-7050	LW-5	MP-1	HH3/8-1.25	-
	MFPN 453000R-5T								HH1/2-1.25	-
	MFPN 454000R-6T								-	-
	MFPN 4510000R-12T								-	-
Fine Pitch	MFPN 452000R-4T	SB-50140TR	TT-15	-	-	-	MP-1	-	XNS610 <sup>*2</sup>	
	MFPN 452500R-5T							HH3/8-1.25	-	
	MFPN 453000R-6T							HH1/2-1.25	-	
	MFPN 454000R-8T							-	-	
	MFPN 4510000R-16T							-	-	
Extra Fine Pitch	MFPN 452500R-6T	SB-40140TRN	-	DTM-15	-	-	MP-1	HH3/8-1.25	-	
	MFPN 453000R-8T							HH1/2-1.25	-	
	MFPN 454000R-10T							-	-	
	MFPN 4510000R-20T							-	-	

Coat Anti-seize Compound (MP-1) thinly on portion of taper and thread when insert is fixed

Recommended Cutting Conditions **C6**

\*2 Differential screw (3/8-24UNF)

Applicable Inserts **C4**