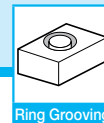
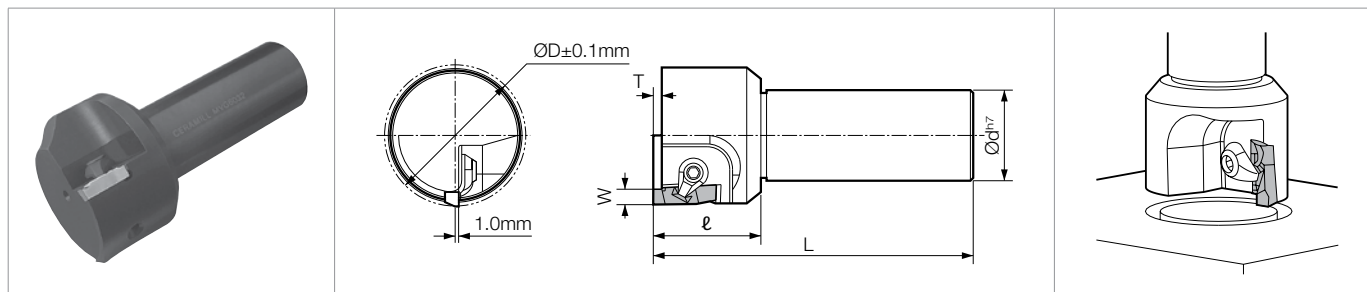


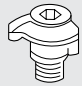
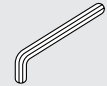
# MVG RING GROOVING END MILL



## MVG

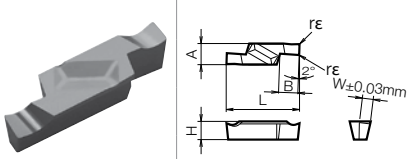


### Toolholder Dimensions

Part Number	Stock	Dimensions (mm)					Edge Width	Spare Parts	
		$\varnothing D$	$\varnothing d$	L	$\ell$	T		W	Clamp Set
MVG 3032	○	30	32	120	40	5.2	4.00 ~ 4.90		
3532	○	35							
4032	○	40							
4532	○	45							
5032	○	50							
5532	○	55							
6032	○	60							

• Dimension T shows available grooving depth.

### Applicable Inserts

Insert Right-handed Insert Shown	Part Number	Previous Part Number	Dimensions (mm)							Insert Grades				
			W	B	$r\epsilon$	A	L	H	Cermet			MEGA COAT	PVD	Carbide
									TN90	TC40	TC60			
	GVFR 400-020B	GVFR 400B	4.00	5.3	0.2	5.8	20	5.0	○	○	○	○	○	○
	430-020B	430B	4.30						○	○	○	○	○	
	460-020B	460B	4.60						○	○	○	○	○	
	490-020B	490B	4.90						○	○	○	○	○	

- GVFR430B-020B inserts are applicable for sealing groove of G-series  
For other ring grooving applications, GVFR400B-020B - GVFR490B-020B are applicable.
- Only Right-hand insert is applicable.

### Recommended Cutting Conditions

Workpiece Material	Feed Rate fz (ipt)	Recommended Insert Grades (Cutting Speed Vc: sfm)					
		Cermet			MEGACOAT	PVD Coated Carbide	Carbide
		TN90	TC40	TC60	PR1225	PR930	KW10
Carbon Steel	0.002-0.006	-	★ 390-660	☆ 330-590	★ 260-560	☆ 260-490	-
Alloy Steel	0.002-0.006	-	★ 390-660	☆ 330-590	★ 260-560	☆ 260-490	-
Mold Steel	0.001-0.005	-	★ 330-590	☆ 260-490	★ 200-490	☆ 200-430	-
Stainless Steel	0.001-0.005	-	☆ 330-590	☆ 260-490	★ 200-490	☆ 200-430	-
Cast Iron	0.002-0.008	-	-	-	-	-	★ 260-490
Non-ferrous Metals	0.002-0.008	-	-	-	-	-	★ 330-980

★: 1st Recommendation ☆: 2nd Recommendation