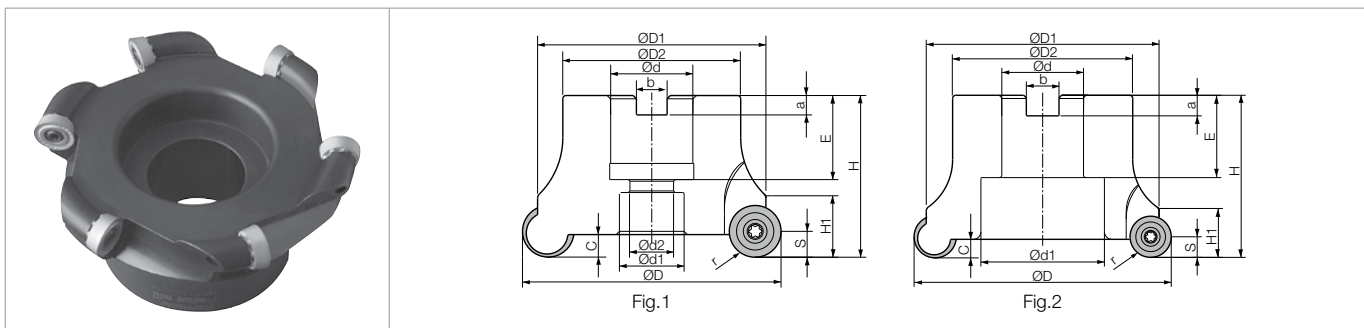


MRP Face Mill





Toolholder Dimensions

Part Number	Stock	No. of Inserts	Dimensions (mm)														Rake Angle (°)		Drawing	Weight (kg)	
			r	ØD	ØD1	ØD2	Ød	Ød1	Ød2	H	H1	E	a	b	C	Pd	S	A.R.			R.R.
MRP 050R-10-6T	○	6	5	50	45.0	38	22.0	18	12	50	13	20	6.3	10.4	3.5	2.5	5.0	+5°	-5°	Fig.1	0.4
063R-10-7T	○	7		63	57.9	50	25.4	20	14	50	13	26	6.0	9.5	3.5	2.5	5.0	+5°	-5°	Fig.1	0.5
MRP 050R-12	○	4	6	50	41.4	38	22.0	18	12	50	15	20	6.3	10.4	5.0	4.0	6.0	+5°	-5°	Fig.1	0.4
063R-12	○	5		63	54.4	50	25.4	20	14	50	15	26	6.0	9.5	5.0	4.0	6.0	+5°	-5°	Fig.1	0.5
080R-12	○	6		80	71.4	55	25.4	20	14	50	15	26	6.0	9.5	5.0	4.0	6.0	+5°	-3°	Fig.1	0.7
080R-12-7T	○	7		80	74.4	59	25.4	20	14	50	15	26	6.0	9.5	4.5	3.5	6.0	+5°	-5°	Fig.1	0.7
MRP 080R-16	○	5	8	80	70.6	55	25.4	20	14	50	19	26	6.0	9.5	7.0	6.0	8.0	+5°	-3°	Fig.1	0.8
100R-16	○	6		100	90.5	70	31.75	48	-	63	19	32	8.0	12.7	7.0	6.0	8.0	+5°	-5°	Fig.2	1.0
100R-16-7T	○	7		100	93.0	70	31.75	48	-	63	19	32	8.0	12.7	6.0	5.0	8.0	+5°	-6°	Fig.2	1.0
125R-16	○	6		125	115.5	80	38.10	58	-	63	19	38	10.0	15.9	7.0	6.0	8.0	+5°	-5°	Fig.2	1.7
MRP 080R-20	○	4	10	80	67.3	55	25.4	20	14	50	23	24	6.0	9.5	8.5	N.A.	10.0	+5°	-3°	Fig.1	0.8
100R-20	○	5		100	87.3	70	31.75	48	-	63	23	32	8.0	12.7	8.5	N.A.	10.0	+5°	-5°	Fig.2	1.0

- Pd: Max. Plunging Depth
- Use BTOO-FMC22 (TMT Standard in the market) for MRP050R-10-6T and MRP050R-12.

Recommended Cutting Conditions **J24**

Spare Parts and Applicable Inserts (Metric Size)

Part Number	Spare Parts		Applicable Inserts ➔ B21
	Clamp Screw 	Wrench 	
MRP 050R-10-6T 063R-10-7T	SB-3080TR	DT-10	RPMT10T3M0
MRP 050R-12 063R-12	SB-40115TR	DT-15	RPMT1204M0-H RPMT1204M0
MRP 080R-12 080R-12-7T	SB-4085TR	DT-15	RPMT1204M0-H RPMT1204M0
MRP 080R-16 100R-16 100R-16-7T 125R-16 125R-16-8T	SB-50120TR	DT-20	RPMT1606M0-H
MRP 080R-20 100R-20	SB-60120TR	DT-25	RPMT2006M0-H

- Mounting bolt (HH10x25) is included for MRP050R.
- Mounting bolt (HH12x35) is included for MRP063R.
- Mounting bolt (HH12x35) is included for MRP080R.

GRADES **A**
LINEUP / INSERTS **B**
45° / 70° LEAD **C**
75° LEAD **D**
90° LEAD **E**
HIGH FEED **F**
MULTI-FUNCTION **G**
SLOT MILLS **H**
RADIUS / BALL-NOSE **J**
OTHER APPLICATIONS **K**
TOOL HOLDING **O**
SPARE PARTS **P**
TECHNICAL **R**
INDEX **T**