

TURNING INSERTS (BACK TURNING)

How to read this page ➔ B7

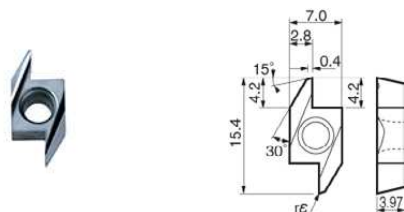
Back Turning

Turning Inserts

Usage Classification

- * Interruption / 1st Choice
- ✱ Interruption / 2nd Choice
- Light Interruption / 1st Choice
- Light Interruption / 2nd Choice
- Continuous / 1st Choice
- Continuous / 2nd Choice
- (Hardness Under 45HRC)

P								Free-Cutting Steel
M								Carbon Steel / Alloy Steel
K								Stainless Steel
N								Gray Cast Iron
S								Nodular Cast Iron
H								Non-ferrous Metals
								Heat-Resistant Alloys
								Titanium Alloy
								Hard materials
Corner Radius (in)	Cermet	MEGACOAT NANO	PVD Coated Carbide	Carbide				Toolholder Page
rε	TC60	PR1425	PR1225	PR930	PR1005	PR1025	KW10	
ABS 15R4005	0.002	●		●			●	➔ E17
15R4015	0.006	●		●			●	
ABS 15R4005M	<0.002	●	●		○	○		
15R4015M	<0.006	●	●		○			
ABW 15R4005	0.002	●		●			○	➔ E18
15R4015	0.006	●		●			●	
ABW 15R4005M	<0.002	●	●		○	○		
15R4015M	<0.006	●	●		○	●		
ABW 23R5005	0.002	●		●			●	➔ E19
23R5015	0.006	●		●			●	
ABW 23R5005M	<0.002	●	●		○	○		
23R5015M	<0.006	●	●		○	●		

AABS / SABS / AABW / SABW Inserts
(for AABS / SABS / AABW / SABW Toolholders)ANSI
Part Number

ABS 15R4005

0.002

●

●

●

➔ E17

15R4015

0.006

●

●

●

ABS 15R4005M

<0.002

●

●

○

○

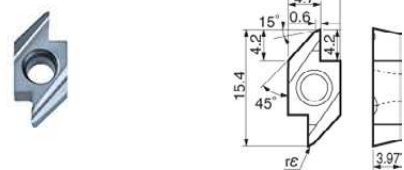
15R4015M

<0.006

●

●

○



ABW 15R4005

0.002

●

●

○

➔ E18

15R4015

0.006

●

●

●

ABW 15R4005M

<0.002

●

●

○

○

15R4015M

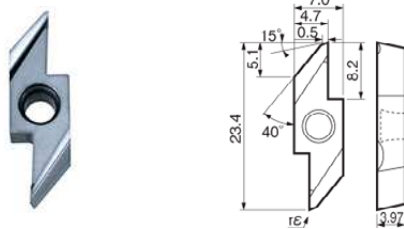
<0.006

●

●

○

●



ABW 23R5005

0.002

●

●

●

➔ E19

23R5015

0.006

●

●

●

ABW 23R5005M

<0.002

●

●

○

○

23R5015M

<0.006

●

●

○

●

● : U.S. Stock Ⓡ : U.S. Stock (R-hand Only) Ⓛ : U.S. Stock (L-hand Only)
 ○ : World Express (Shipping: 7-10 Business Days) Ⓡ : World Express (R-hand Only) Ⓛ : World Express (L-hand Only)